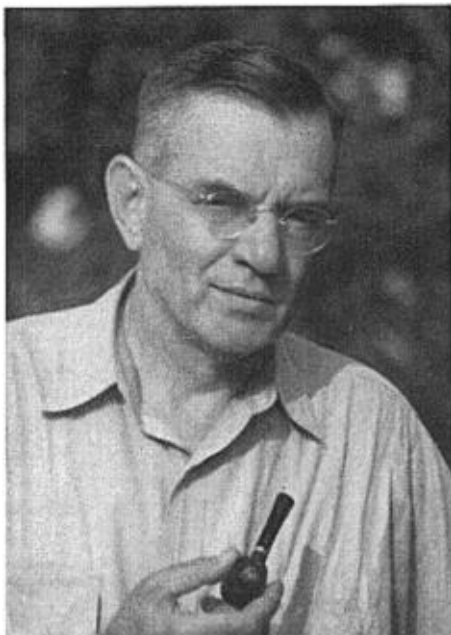


## NOTES AND NEWS



Harold M. Holland, member of the Cooper Ornithological Club since 1901.

Ornithology the world over sustained a great loss in the death of James L. Peters on April 19 of this year. Mr. Peters was held in high regard for his 7 volumes on the Birds of the World. He was president of the International Commission on Zoological Nomenclature, Curator of Birds at the Museum of Comparative Zoology at Harvard University, past president of the American Ornithologists' Union and for many years editor of *Bird-Banding*.

After four years as Treasurer of the Cooper Ornithological Club, Sidney B. Peyton has asked to be relieved of the very considerable burden of this post. Jack C. von Bloeker, Jr., of 161 West 121st St., Los Angeles 61, California, succeeds him. The sincere gratitude of our organization is extended to Mr. Peyton for his devotion to this important job. He has contributed a service of major proportion which will long be appreciated by our large membership.

Important new publications recently received are Finn Salomonsen's "The Birds of Greenland," Part III, the concluding section, and Harold S. Peters and Thomas D. Burleigh's "The Birds of Newfoundland," the latter very attractively illustrated by Roger Tory Peterson.

## COOPER CLUB MEETINGS

## SOUTHERN DIVISION

**FEBRUARY.**—The monthly meeting of the Southern Division of the Cooper Ornithological Club was held on February 26, 1952, at the University of Southern California. The following names were proposed for membership: Miss Jean Burch, 43 Douglas Road, Belmont 78, Mass., by Wendell Taber; Hugh D. Byrne, 2529 W. Ave. 33, Los Angeles 65, Calif., by Kenneth Stager; Dr. Wallace Rogers, 715 Ellsworth Dr., N.W., Atlanta, Georgia, by Earle Greene; Jack A. Smalley, 1891 Denison St., Pomona, Calif., by J. McB. Robertson; Marquess Hachisuka, Shizuoka Ken, Atami, Japan, and Marquis Yoshimaro Yamashina, 49 Nampaidai-Machi-Shibuya-Ku, Tokyo, Japan, by Mrs. J. Q. Burch; Jerram Lefevre Brown, 19 Hitchcock Road, Amhurst, Mass., Leonard Hall, Possum Trot Farm, Caledonia, Mo., Dr. M. Max Hensley, Dept. of Biology, Gettysburg College, Gettysburg, Penn., Holger Holgerson, Stavanger Museum, Stavanger, Norway, Edgar B. Kincaid, Jr., 702 Park Place, Austin, Texas, Ronald H. Mackay, Dept. of Zoology, Univ. of B. C., Vancouver, B.C., Martin Mees, Koningen Emmaplein 7, Rotterdam, Netherlands, Mrs. Monta A. Mills, 1091 Bush St., Apt. 312, San Francisco, Calif., Miss Clelia A. Paroni, 575 Vicente Ave., Berkeley 7, Calif., Dr. Robert L. Rauch, Box 960, U. S. Public Health Service, Anchorage, Alaska, Marie E. Sterne, 3027 Benvenue Ave., Berkeley 5, Calif., Mrs. Sophie Stubgen, 48 Highgate Rd., Berkeley 8, Calif., and J. Troy Towe, Rt. 5, Box 143, Mt. Airy, N. C., all by C. V. Duff.

Kenneth Stager reminded members of the nesting survey being conducted by the Research Committee on certain birds in the Los Angeles area.

Observations by members brought numerous reports of Townsend Solitaires seen in lowland areas in the month of February. Bob Pyle reported two White-winged Doves that had been in Los Angeles since November. He also reported a Tufted Puffin and a Blue-winged Teal seen at Playa del Rey on February 24. Wade Fox observed that Horned Grebes were more numerous in southern California this winter than formerly.

William Norman Jupe of Palm Springs presented a series of colored motion pictures, entitled "Bird Portraits."—DOROTHY E. GRONER, *Secretary*.