

I was unable to ascertain what insects these nuthatches fed their young, but I saw the male bring a long, jointed green worm, a long white worm, and a white-winged insect. One day, as I was attempting to photograph the nest, a Slender-billed Nuthatch (*Sitta carolinensis aculeata*) flew to the entrance hole and peered in, and another day a Douglas squirrel came head-first down the tree and poked his nose inside.

The young nuthatches left the nest on July 7. We then chopped down the fir stub and found that the hole was 6 inches deep and free of lining of any sort. There was a deep layer of fine sawdust on the bottom, however, and again I noticed the liberal coating of pitch around the entire circumference of the hole.—ANITA GUNDERSON, *Dardanelle, Tuohumne County, California, August 4, 1939.*

Some "Butcher-bird" Activities of the California Shrike.—The California Shrike (*Lanius ludovicianus gambeli*) is known in my vicinity as a canary killer. A caged canary placed out of doors on the porch for sunshine and air is an invitation to our numerous butcher-birds to "come and get it."

Some types of banding traps offer similar opportunities to shrikes. I have observed on several occasions that my W.B.B.A. two-compartment trap has received the attention of butcher-birds. Not always, however, will the object of the shrike's attention become victimized. A shrike may simply look in interestedly on a trapped bird from alongside or from the top of the trap, causing intense freight to its occupant.

A few specific instances occurring in Benicia, California, show that shrikes are attracted to birds in banding traps. On October 24, 1932, I caught a shrike in one compartment of a trap while a Nuttall Sparrow (*Zonotrichia leucophrys nuttalli*) was in the other compartment. On November 1, 1936, I caught a shrike in one section while a Golden-crowned Sparrow (*Zonotrichia coronata*) was the occupant of the other section. On January 21, 1937, a shrike killed a Nuttall Sparrow through the

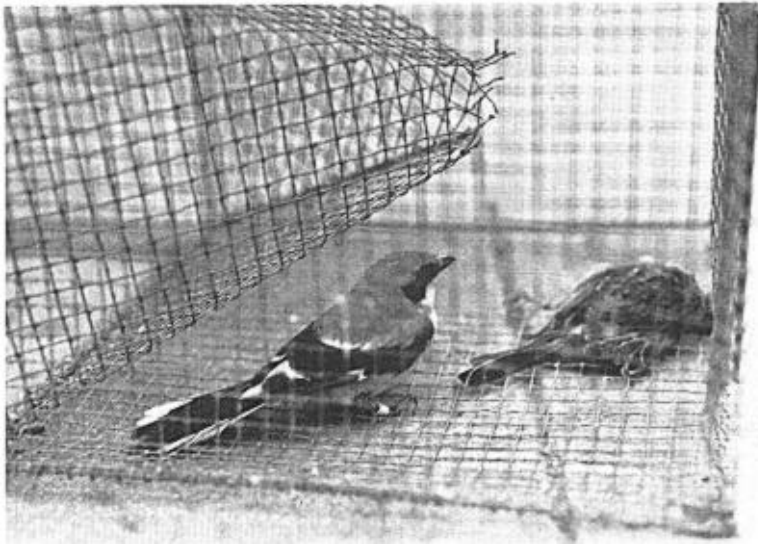


Fig. 54. California Shrike in banding trap with its victim, a Golden-crowned Sparrow; March 27, 1939, Benicia, California.

bars of a trap, and in an endeavor to get the bird out of the cage, the shrike was captured in the adjoining compartment. This season I added a government sparrow trap to my banding equipment into which on March 27, 1939, a California Shrike entered and killed a Golden-crowned Sparrow (fig. 54).

Although a bird lover dislikes this killing of visitors to his traps, I have to date banded and released these avian butchers.—EMERSON A. STONER, *Benicia, California, August 21, 1939.*