

DECADES OF GIVING

GUARANTORS

Marcia Brady Tucker (1968)
Beecher Bowdish (1970)
Christian Goetz (1970)
James Savage (1970)
Herbert and Betty Carnes (1979)
Alexander and Beatrice Wetmore (1979)
Wilbur Yocum Gary (1986)
Charles R. Blake (1988)
Donald L. Bleitz

PATRONS

1930-1939

Ruthven and Martha R. Towner Deane
C. Hart Merriam

1940-1949

Hoyes Lloyd
Edward McIlhenny
Witmer and Lillie May Lafferty Stone
Dayton and Lillian C. Stoner
William P. Wharton

1950-1959

Jonathan and Ethel A. Dwight	Margaret Morse Nice
Crawford H. Greenewalt	John Treadwell Nichols
Ludlow Griscom	Theodore S. Palmer
Alfred O. Gross	James Lee Peters
Raymond G. Guernsey	Roger T. Peterson
Mrs. B. Brewster Jennings	Arlie W. Schorger
Louise de Kiriline Lawrence	Herbert L. Stoddard
Cyrus Mark	Josselyn Van Tyne
Loye H. Miller	

1960-1969

Ormsby Annan	Frank A. Hartman
Thomas C. Desmond	Burt L. Monroe, Sr.
Robert G. Goelet	Frank Walters
Stephen Gregory	Gertrude Wicks

1970-1979

John E. Dupont	Ralph W. Schreiber
Amelia R. Laskey	Elizabeth A. Schreiber
Edmund W. Mudge, Jr.	Paul A. Stewart
William H. Phelps, Jr.	W. E. Clyde Todd
William H. Pugh	Col. Lloyd R. Wolfe

1980-1989

John W. Aldrich	Richard Marrus
Dean Amadon	Margaret K. Mitchell
Walter Bock	Burt L. Monroe, Jr.
Alan H. Brush	Frank A. Pitelka
Lula and Ben B. Coffey, Jr.	Stephen M. and Ruth Ogden Russell
Charles T. and Patricia H. Collins	Charles G. Sibley
Nicholas E. and Elsie C. Collias	Frances Sibley
Donald S. Farner	Peter Stettenheim
Thomas R. Howell	Harrison B. Tordoff
Marion A. Jenkinson	George Wickstrom
Brina Kessell	Merrill Wood
Wesley E. Lanyon	Glen E. and Janet A. Woolfenden
Deane McGurk	

Categories of Giving (as established in 1989)

Sponsor (\$1,000), Patron (\$3,000), Benefactor (\$10,000)
Guarantor (\$25,000)

The names of major donors are listed in perpetuity in the rolls of the American Ornithologists' Union.

The needs of the American Ornithologists' Union have changed since its founding over 100 years ago, and they will continue to change. Thus the A. O. U. strongly recommends that gifts to the Union be unrestricted.

CHECK-LIST OF NORTH AMERICAN BIRDS

Sixth Edition - 1983

877 pages

\$35.00 (\$28.00 for AOU members)

SUPPLEMENTS (1985, 1987, 1989)

\$3.00 each



DELUXE EDITION

Limited Edition of 100 - Leather Bound

Each signed by all contributors

\$90.00

This authoritative source gives
distributions and habitats for species
from the Arctic through Panama
and includes the West Indies and Hawaii

Order from: Max C. Thompson, Assistant to the AOU Treasurer
Department of Biology
Southwestern College
Winfield, Kansas 67156

WHERE HAVE ALL THE BIRDS GONE?

Essays on the Biology and Conservation of Birds
That Migrate to the American Tropics

John Terborgh

"Things are going wrong with our environment," writes John Terborgh, "even the parts of it that are nominally protected. If we wait until all the answers are in, we may find ourselves in a much worse predicament than if we had taken notice of the problem earlier. By waiting, one risks being too late; on the other hand, there can be no such thing as being too early." Terborgh's warnings are essential reading for all who care about migratory birds and our natural environment. By scrutinizing ill-planned urban and suburban development in the United States and the tropical deforestation of Central and South America, he summarizes our knowledge of the subtle combination of circumstances that is devastating our bird populations.

Cloth: \$45.00 ISBN 0-691-08531-5



AT YOUR BOOKSTORE OR

PRINCETON UNIVERSITY PRESS

41 WILLIAM ST. • PRINCETON, NJ 08540 • (609) 258-4900 • ORDERS 800-PRS-ISBN (777-4726)



it's easy
to subscribe . . .
just call
toll free*

800-341-1522

DATATEL 800™

weekdays: 8 am-9 pm
Saturdays: 9 am-5 pm
eastern time

Each issue of the **QRB** contains

- major review articles that describe, synthesize, and evaluate developments in the fields under discussion
- the largest book-review section in the life sciences of any journal in the world (an average of 130 books are evaluated per issue)—a superb survey of what is going on across the entire breadth of biology
- commentaries on topics of special interest to biologists and on controversies in biological circles.
- reviews of new biological software

subscription rates (domestic & foreign postage incl.):

Institutions, \$60.00; Individuals, \$27.00; Students, \$20.00
(faculty signature required, 4-year limit, on student subscriptions)

* If you prefer, send check or money order, payable to *The Quarterly Review of Biology* (include your mailing address, with postal code/country) to:

**The Quarterly Review of Biology B1
State University of New York
Stony Brook, NY 11794-5275 USA**

Lovebirds, Cockatiels, Budgerigars: BEHAVIOR & EVOLUTION

by J. Lee Kavanau, UCLA

- ▶...highly informative volume...actually several books under one cover...[the author has] enormous experience with the raising of these birds....presenting a great deal of interesting information, much of it new. Prof. Ernst Mayr, Harvard Univ.
- ▶...unique, exhaustive laboratory studies of..behavior....insightful and remarkably comprehensive scenario of..origin & evolution of birds &..roots of their behaviors....must reading for all interested in avian behavior & reproduction....wealth of information & concepts that will be of interest to all evolutionists. Prof. E. C. Olson, UCLA
- ▶...enormous amount of information....very important contribution to..study of behavior of parrot birds, about which so little is known... Prof. K. Immelmann, Univ. Bielefeld
- ▶...monumental in..scope...much fascinating reading...many intriguing subjects....enormous project....excellent reference for..experimental behavior or evolutionary science....looking forward to..in-depth study &..to apply [the author's] concepts to...aviculture and avian veterinary medicine. G. J. Harrison, DVM, Bird World, Nov., 1987
- ▶...offers an interesting synthesis of avian evolution, in general, tying together [the author's] views on evolutionary sequences involved in thermoregulation, insulation, egg care, care of young, mode of feeding, and degree of arboreality. Auk, July, 1988
- ▶.....scope..is impressive....information conveyed..is almost overwhelming....comprehensive discussions on..behavior, morphology, physiology, ecology, biogeography, and evolution of all birds.....extremely detailed discussion of the avian brain.....fascinating ideas on the evolution of bird reproductive behavior.....should provide much fuel for thought & some debate among students of avian evolution.....detailed descriptions of captive bird breeding and experimentation provide numerous ideas for..research on captive birds..... a must for anyone seriously interested in avian evolution... Wilson Bull., Sept., 1989

March, 1987, xxvi + 1,001 pp., 7 indices, 1,455 refs., \$49.95
Prepay ck. or m/o. Add \$4 p/h (\$6 outside U.S.) + \$3.25 s/t in Calif.
Science Software Sys., Monogrs., Box 241710, Los Angeles, CA 90024

AIR NEW ZEALAND

INVITES YOU TO CHRISTCHURCH
for the 20th International Ornithological Congress
2-9 December 1990



The IOC logo bird is flightless, but that
doesn't mean you have to be!

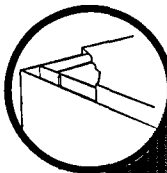
**FLY WITH US . . . and enjoy the excitement
and bird life of beautiful New Zealand**

Air New Zealand is the AOU's official carrier to the Christchurch IOC,
and is proud of its contribution to the AOU's Second Century Campaign.

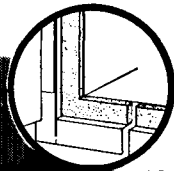
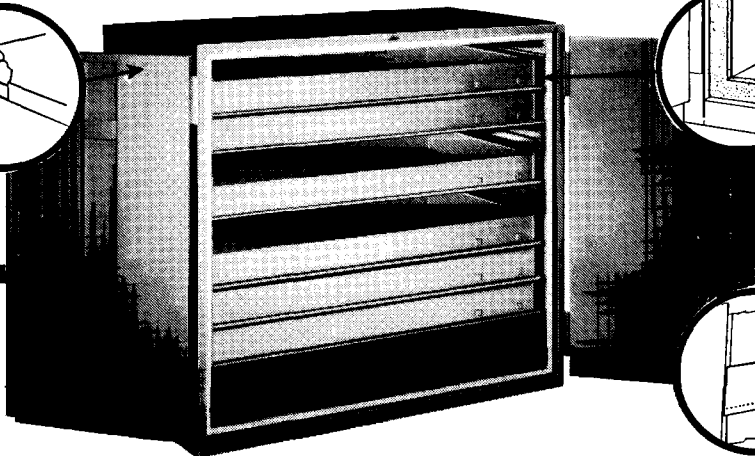
We suggest you book your flight at least 6 months in advance.
Contact your local travel agent or Air New Zealand,
(800) 262-1234, soon!

How many years would it take to replace your collection?
 Safe-guard your valuable specimens
PERMANENT SPECIMEN PRESERVATION

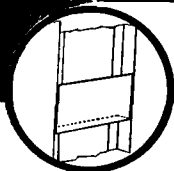
with *Lane* **ZOOLOGY AND ORNITHOLOGY
 SPECIMEN CABINETS**



Double Wall Construction



Pest-Proof and Air Tight Seal



Fumigant Compartment

- Double Wall Construction
- Pest-Proof and Air Tight Seal
- Double Panel Door
 - Lift-Off Safe Type Hinge
 - Fumigant Compartment
 - 3-Point Locking Mechanism
 - Front and Back Air Tight Seals
 - Specimen Trays of Aluminum and Masonite. Lightweight, sturdy and easy to handle.

Skin Case #201 (Illustrated)
 Holds large trays for larger specimens.

Skin Case # 202 (not illustrated)
 Divided for half-size trays for smaller specimens.

FOR ILLUSTRATED BROCHURE, WRITE

Lane
SCIENCE EQUIPMENT CORP.
 225 W. 34th St., New York, N.Y. 10122

Lane Science Equipment Corp. Dept. D
 225 W. 34th St., New York, N.Y. 10122

Please send complete details on Lane Zoology and Ornithology Specimen Cabinets to:

Name _____ Title _____

Institution _____

Address _____

City _____ Zone _____ State _____

THE AUK

A Quarterly Journal of Ornithology

PUBLISHED BY THE AMERICAN ORNITHOLOGISTS' UNION

Editor: ALAN H. BRUSH, Department of Physiology and Neurobiology, University of Connecticut, Storrs, Connecticut 06268.

Copy Editor: GAIL W. HUNTER

Associate Editors: FRED E. LOHRER (Periodical Literature), M. ROSS LEIN AND BRUCE M. BEEHLER (Book Reviews)

THE AUK welcomes original reports dealing with the biology of birds, emphasizing the documentation, analysis, and interpretation of laboratory and field studies, theoretical or methodological developments, or reviews of existing information or ideas. Contributions are encouraged from throughout the world, but must be written in English.

SUGGESTIONS TO CONTRIBUTORS. Submit the typewritten original and two copies of the text, tables, and all other material to the Editor. Every manuscript must be accompanied by a **letter of transmittal** (1988, *Auk* 105: 803). Three copies of illustrations should be submitted. *All typewritten material must be double-spaced* on one side of numbered 8½ × 11 inch (21½ × 28 cm) good quality bond paper, with at least 1 inch (2½ cm) margins. Originals typed on erasable, light weight, or mimeo bond will not be considered, but copies may be clear reproductions. Number pages throughout the Literature Cited. Avoid footnotes. The style of manuscripts should conform to general usage in recent issues. A cover page should contain the full title, a shortened version of the title (not to exceed 35 characters in length) for use as a running head, and your address at the time the research was conducted. Your present address, if different, should be given at the bottom of the first text page. The cover page should include the name and full address of the individual to whom proof is to be sent.

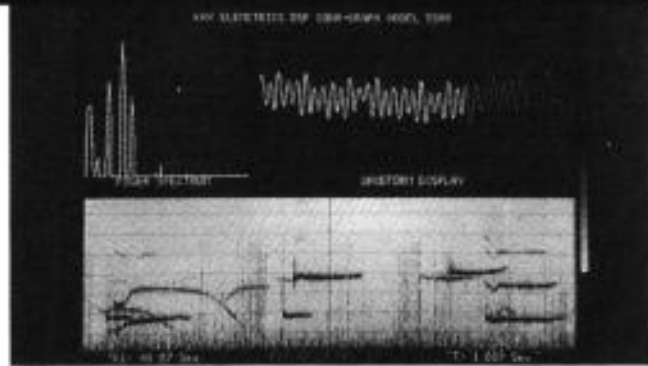
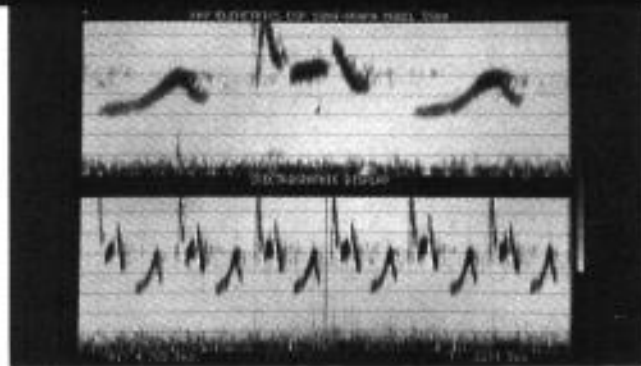
Each article should be preceded by an Abstract not exceeding 5% of the length of the paper. The Abstract should recapitulate the findings of the paper, not describe the work done. Acknowledgments should follow the text and precede the Literature Cited. Scientific and English names of birds always should be given where first mentioned in the text, and should follow *The A.O.U. Checklist of North American Birds* and supplements or the appropriate equivalent unless departures are explained and defended. SI metric units should be used in all measurements. In general, abbreviations of statistical terms and mensural units should conform with the Council of Biology Editors' *CBE Style Manual*, 5th ed. Use the 24-hour clock (0800 and 2030) and "continental" dating (1 July 1971).

Tables, which must not duplicate material in either the text or illustrations, are typewritten (**double-spaced throughout!**) separately from the text. Each table should contain a short but complete heading, and must not contain vertical rulings. *Illustrations* (including labels of coordinates) should be on 8½ × 11 inch (21½ × 28 cm) sheets, and must be mailed flat. The name of the author and the figure number should be penciled on the *back* of each figure. Legends should be typed consecutively (double-spaced) on a separate page. Drawings should be drafted with undiluted india ink, and be large enough to permit ½ to ⅓ reduction to the size that they will appear in print. Graphs may be drafted on coordinate paper ruled with light *blue* lines; do *not* use coordinate paper ruled with *green* lines. Use mechanical lettering, pressure transfer letters, or calligraphy; typewritten lettering is not acceptable. Lettering should be large enough to be easily readable after 70% reduction of the figure, but not overly large. Lettering style should be uniform among all figures for a manuscript, as should the size of lettering following reduction. Photographs should be glossy prints of good contrast and sharpness, and should be approximately the same size as they will appear in print. Letters and arrows on photographs are best applied by pressure-sensitive materials. The *Auk* is published in a double-column format; give careful attention to designing your tables and illustrations accordingly.

Literature citations for **all** manuscripts are listed (double-spaced!) in a Literature Cited section following the text and Acknowledgments. Text citations should include author and year (e.g. Darwin 1858), or, if more than two authors are involved, the first author and year (Jones et al. 1947). If critical matter is cited or quoted directly from longer works, indicate the pertinent pages (e.g. MacArthur 1972: 204). Citations of two or more works on the same topic should be cited in chronological order (e.g. Meanley 1971, Dyer 1975). For abbreviations and forms of titles of serial publications, follow the BIOSIS List of Serials. Consult recent issues of *The Auk* and the *CBE Style Manual* for additional details.

A more detailed set of instructions for contributors appeared in *The Auk*, Vol. 105, No. 1 (January 1988), copies of which are available from the Editor.

Bioacousticians



Your workstation is here.

The DSP Sona-Graph™, model 5500 is a signal analysis workstation designed for the acquisition, processing and display of time-varying biological signals. The 5500 acquires, analyzes and displays signals in real-time with a continuous scrolling display, combining the features of a real-time spectrograph, a high-speed dual channel FFT and a computer-based data acquisition system.

It's a "wish list" workstation for the bioacoustician. The 5500 includes digital anti-aliasing filters, 16 bit A/D and 1.5 Mbytes of ROM storage for signal processing programs. Designed with you in mind, the 5500 provides up to 8 Mbytes of signal storage (one or two signals), on-screen cursors, extensive editing, high fidelity playback and computer interface capabilities.

- ✓ Two channel simultaneous display
- ✓ Real-time to 32 kHz
- ✓ Continuous thermal printing
- ✓ On-screen noise reduction feature
- ✓ High resolution color / grey scale display
- ✓ High fidelity playback and editing

To find out more about using the DSP Sona-Graph in your work, call **Robert McClurkin** at **800-289-5297** or write to the address listed below.



KAY

Kay Elemetrics Corp.
12 Maple Avenue
Pine Brook, NJ 07058
Tel: 201/227-2000
TWX: 710/734-4347
FAX: 201/227-7760

DSP Sona-Graph™ and Sonogram® are trademarks of Kay Elemetrics Corp.