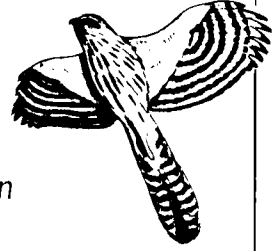




A Guide to the Birds of Colombia



Steven L. Hilty and William L. Brown
Plates by Guy Tudor

H. Wayne Trimm, John Gwynne, Larry McQueen,
John Yrizarry, and P. Prall
Line Drawings by Michel Kleinbaum

Describing all of Colombia's birds, Steven Hilty and William Brown bring together information on one of the world's largest avifaunas—nearly 1,700 species. Over half of all the species of birds in South America are included, thus making the book useful in regions adjacent to Colombia, as well as in the country itself. The primary purpose of the work is to enable observers to identify the birds of the region, but it also provides entailed species accounts and will serve as an important handbook and reference volume.

About 750 pages. 56 color plates, 13 halftone plates, 99 line illus.,
2 maps. Paperback edition sewn for extra strength.

P: \$42.50. C: \$95.00.

41 William Street **Princeton University Press** Princeton, NJ 08540



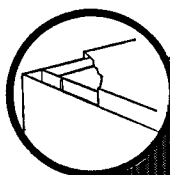
*The monthly journal
for every birdwatcher*

British Birds

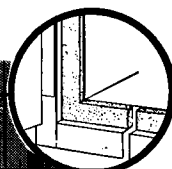
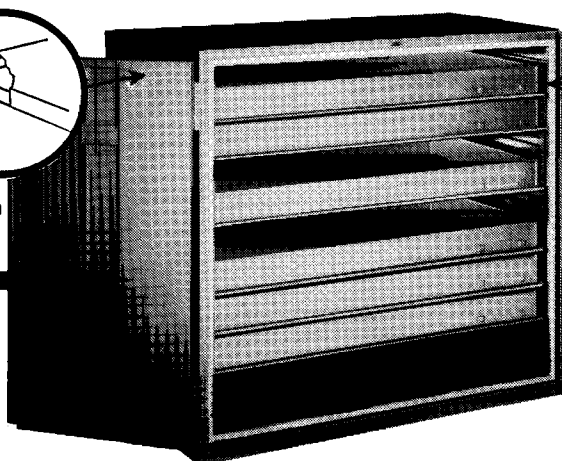
For a free sample copy
write to Mrs Erika Sharrock, Fountains,
Park Lane, Blunham, Bedford MK44 3NJ,
England

How many years would it take to replace your collection?
Safe-guard your valuable specimens
PERMANENT SPECIMEN PRESERVATION

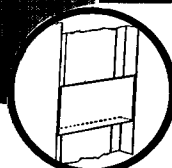
with *Lane* **ZOOLOGY AND ORNITHOLOGY**
SPECIMEN CABINETS



Double Wall Construction



Pest-Proof and Air Tight Seal



Fumigant Compartment

- Double Wall Construction
- Pest-Proof and Air Tight Seal
- Double Panel Door
 - Lift-Off Safe Type Hinge
 - Fumigant Compartment
 - 3-Point Locking Mechanism
 - Front and Back Air Tight Seals
 - Specimen Trays of Aluminum and Masonite. Lightweight, sturdy and easy to handle.

Skin Case #201 (illustrated)
 Holds large trays for larger specimens.

Skin Case # 202 (not illustrated)
 Divided for half-size trays for smaller specimens.

FOR ILLUSTRATED BROCHURE, WRITE

Lane

SCIENCE EQUIPMENT CO.

225 WEST 34th Street New York, NY 10122

Lane Science Equipment Co. Dept. D
 225 WEST 34th Street, New York, NY 10122

Please send complete details on Lane Zoology and Ornithology Specimen Cabinets to:

Name _____ Title _____

Institution _____

Address _____

City _____ Zone _____ State _____

The Auk

A Quarterly Journal of Ornithology

EDITOR

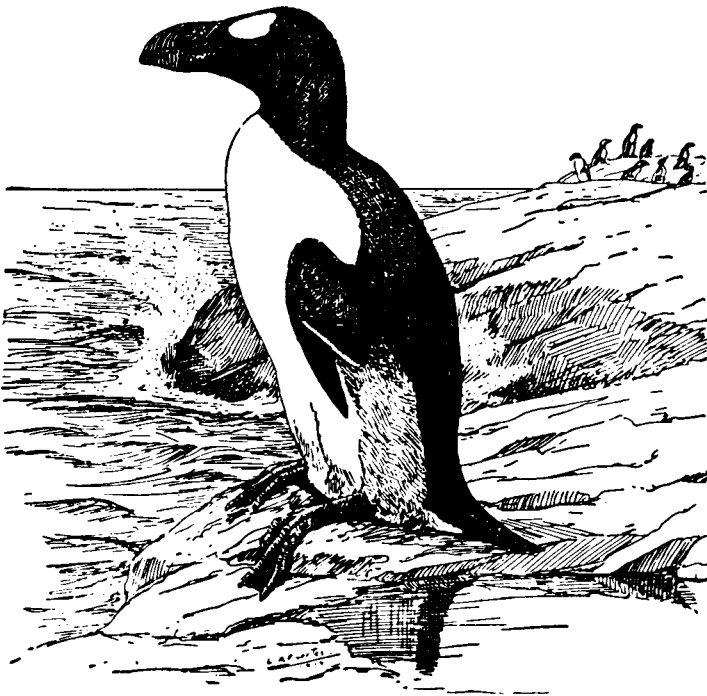
ALAN H. BRUSH

COPY EDITOR

K. ELIZABETH K. PACALA

ASSOCIATE EDITORS

FRED E. LOHRER, M. ROSS LEIN



VOLUME 103

PUBLISHED BY

THE AMERICAN ORNITHOLOGISTS' UNION

1986

CONTENTS OF VOLUME 103

NUMBER 1

THERMAL CONSEQUENCES OF ROOST-SITE SELECTION: THE RELATIVE IMPORTANCE OF THREE MODES OF HEAT CONSERVATION. <i>Glenn E. Walsberg</i>	1
CLUTCH SIZE AND FLEDGING SUCCESS IN THE TURQUOISE-BROWED MOTMOT. <i>Peter E. Scott and Robert F. Martin</i>	8
MOONLIGHT AVOIDANCE BEHAVIOR IN LEACH'S STORM-PETRELS AS A DEFENSE AGAINST SLATY-BACKED GULLS. <i>Yutaka Watanuki</i>	14
RELATIONSHIPS AMONG TERRITORY SIZE, HABITAT, SONG, AND NESTING SUCCESS OF NORTHERN CARDINALS. <i>Richard N. Conner, Mary E. Anderson, and James G. Dickson</i>	23
FAMILY ASSOCIATIONS IN COMMUNALLY ROOSTING BLACK VULTURES. <i>Patricia Parker Rabenold</i>	32
COMPARATIVE REPRODUCTIVE SUCCESS OF YELLOW-SHAFTED, RED-SHAFTED, AND HYBRID FLICKERS ACROSS A HYBRID ZONE. <i>William S. Moore and Walter D. Koenig</i>	42
BROOD PARASITISM IN A HOST GENERALIST, THE SHINY COWBIRD: I. THE QUALITY OF DIFFERENT SPECIES AS HOSTS. <i>Paul Mason</i>	52
BROOD PARASITISM IN A HOST GENERALIST, THE SHINY COWBIRD: II. HOST SELECTION. <i>Paul Mason</i>	61
REVERSED SEXUAL SIZE DIMORPHISM: EFFECT ON RESOURCE DEFENSE AND FORAGING BEHAVIORS OF NONBREEDING NORTHERN HARRIERS. <i>Ethan J. Temeles</i>	70
DISPERSAL IN WHITE-CROWNED SPARROWS: A COMPUTER SIMULATION OF THE EFFECT OF STUDY-AREA SIZE ON ESTIMATES OF LOCAL RECRUITMENT. <i>Michael A. Cunningham</i>	79
NESTING SUCCESS AND MORTALITY OF THE BOAT-TAILED GRACKLE. <i>G. Thomas Bancroft</i>	86
TROPHIC ORGANIZATION OF UNDERSTORY BIRDS IN A MALAYSIAN DIPTEROCARP FOREST. <i>Marina Wong</i>	100
HOURLY VARIATION IN MORNING POINT COUNTS OF BIRDS. <i>Jared Verner and Lyman V. Ritter</i>	117
GROWTH RATES OF CRANES REARED IN CAPTIVITY. <i>Robert E. Ricklefs, Donald F. Bruning, and George W. Archibald</i>	125
WHY ARE NESTING MARSH WRENS AND YELLOW-HEADED BLACKBIRDS SPATIALLY SEGREGATED? <i>Marty L. Leonard and Jaroslav Picman</i>	135
SEABIRD PATCHINESS IN TROPICAL OCEANIC WATERS: THE INFLUENCE OF SARGASSUM "REEFS." <i>J. Christopher Haney</i>	141
PARENTAL INVESTMENT BY THE NORTHERN MOCKINGBIRD: MALE AND FEMALE ROLES IN FEEDING NESTLINGS. <i>Randall Breitwisch, Peter G. Merritt, and George H. Whitesides</i>	152
THERMAL INSULATION OF THE DOWN AND FEATHERS OF PYGOSCELID PENGUIN CHICKS AND THE UNIQUE PROPERTIES OF PENGUIN FEATHERS. <i>Jan R. E. Taylor</i>	160
FLIGHT COST OF A SMALL PASSERINE MEASURED USING DOUBLY LABELED WATER: IMPLICATIONS FOR ENERGETICS STUDIES. <i>Paul Tatner and David M. Bryant</i>	169
CHANGES IN BODY WEIGHT AND BODY COMPOSITION OF BREEDING RING-NECKED DUCKS (<i>AYTHYA COLLARIS</i>). <i>William L. Hohman</i>	181
MALE COURTSHIP VOCALIZATIONS AS CUES FOR MATE CHOICE IN THE SATIN BOWERBIRD (<i>PTILONORHYNCHUS VIOLACEUS</i>). <i>Christopher A. Loffredo and Gerald Borgia</i>	189
MULTIPLE BROODING AS A REPRODUCTIVE STRATEGY: TIME-CONSERVING ADAPTATIONS IN MOURNING DOVES. <i>David Westmoreland, Louis B. Best, and David E. Blockstein</i>	196
IN MEMORIAM: RODOLPHE MEYER DE SCHAUENSEE. <i>S. Dillon Ripley</i>	204
IN MEMORIAM: ANDREW KEVE, 1909-1984. <i>Miklos D. F. Udvardy</i>	207
IN MEMORIAM: EDGAR BRYAN KINCAID, JR., 1921-1985. <i>Charles Hartshorne</i>	208
IN MEMORIAM: CHARLES RUSSELL MASON, 1895-1983. <i>Herbert W. Kale II</i>	209
SHORT COMMUNICATIONS	
Song Sparrows Grow and Shrink with Age. <i>James N. M. Smith, Peter Arcese, and Dolph Schluter</i>	210
Feeding of Brown-headed Cowbird (<i>Molothrus ater</i>) Fledglings by More Than One "Host" Species. <i>Nedra K. Klein and Kenneth V. Rosenberg</i>	213
The Influence of Human Disturbance on Tufted Puffin Breeding Success. <i>D. J. Pierce and T. R. Simons</i>	214
Was Bachman's Warbler a Bamboo Specialist? <i>J. V. Remsen, Jr.</i>	216
Consumption of Largemouth Bass Eggs by Redhead Ducks at Ruby Lake, Nevada. <i>J. H. Noyes</i>	219
Relationships of Pelagic Seabirds with the Southern Ocean Environment Assessed by Correspondence Analysis. <i>R. W. Abrams and L. G. Underhill</i>	221
An Alternative Method for the Analysis of Emlen Funnel Data. <i>Jeffrey D. Cherry and Kenneth P. Able</i>	225
Notes on the Plumages of the Paramo Seed-eater (<i>Catamenia homochroa</i>). <i>Robert W. Dickerman</i>	227
Breeding-site Selection and Colony Formation in Double-crested and Pelagic Cormorants. <i>Douglas Siegel-Causey and George L. Hunt, Jr.</i>	230

Intracutch Egg-size Variation in Birds: Physiological Responses of Individuals to Fluctuations in Environmental Conditions. <i>Antero Järvinen and Juha Ylismaunu</i>	235
Nutrient Reserves of Premigratory Brant During Spring. <i>Larry D. Vangilder, Loren M. Smith, and Richard K. Lawrence</i> ..	237
Delayed Nocturnal Occupation of Breeding Colonies by Least Terns (<i>Sterna antillarum</i>). <i>Jonathan L. Atwood</i>	242
Development of Formation Flying in Juvenile White Ibises (<i>Eudocimus albus</i>). <i>Daniel R. Petit and Keith L. Bildstein</i>	244
COMMENTARY	
Long Laying Intervals. <i>S. Marchant</i>	247
EDITORIAL	
Peer Review. <i>Alan H. Brush</i>	248
BOOK REVIEWS. <i>Edited by William E. Southern</i>	249
100 YEARS AGO IN <i>THE AUK</i>	159, 203
ERRATA	180
NOTES AND NEWS	13, 22, 51, 78, 85

NUMBER 2

VIGILANCE PATTERNS OF BALD EAGLES FEEDING IN GROUPS. <i>Susan K. Knight and Richard L. Knight</i>	263
DIFFERENCES IN SUSCEPTIBILITY TO PREDATION DURING NESTING BETWEEN PIED AND BLACK STILTS (<i>HIMANTOPUS</i> spp.). <i>Raymond J. Pierce</i>	273
A PREVIOUSLY UNKNOWN PLUMAGE OF FIRST-YEAR INDIGO BUNTINGS AND THEORIES OF DELAYED PLUMAGE MATURATION. <i>Sievert Rohwer</i>	281
MOLT OF FEMALE LESSER SCAUP IMMEDIATELY FOLLOWING BREEDING. <i>Jane E. Austin and Leigh H. Fredrickson</i>	293
BIOENERGETICS OF EGG PRODUCTION BY FEMALE HOUSE SPARROWS. <i>David G. Krementz and C. Davison Ankney</i>	299
REPRODUCTIVE PERFORMANCE OF SEABIRDS: THE IMPORTANCE OF POPULATION AND COLONY SIZE. <i>George L. Hunt, Jr., Zoe A. Eppley, and David C. Schneider</i>	306
WHY DOES INTENSITY OF AVIAN NEST DEFENSE INCREASE DURING THE NESTING CYCLE? <i>Richard L. Knight and Stanley A. Temple</i>	318
INFLUENCE OF RESOURCE ABUNDANCE ON USE OF TREE-FALL GAPS BY BIRDS IN AN ISOLATED WOODLOT. <i>John G. Blake and William G. Hoppes</i>	328
GENERIC STATUS OF EULER'S FLYCATCHER: A MORPHOLOGICAL AND BIOCHEMICAL STUDY. <i>Wesley E. Lanyon and Scott M. Lanyon</i>	341
AN ANALYSIS OF VOCAL COMMUNICATION IN YOUNG BROWN NODDIES (<i>ANOUS STOLIDUS</i>). <i>Diane E. Riska</i>	351
AN ANALYSIS OF VOCAL COMMUNICATION IN THE ADULT BROWN NODDY (<i>ANOUS STOLIDUS</i>). <i>Diane E. Riska</i>	359
THE INFLUENCE OF MOONLIGHT ON THE BEHAVIOR OF GOATSUCKERS (<i>CAPRIMULGIDAE</i>). <i>Alexander M. Mills</i>	370
SURVIVAL ANALYSIS OF EGGS AND CHICKS OF ADÉLIE PENGUINS (<i>PYGOSCELIS ADELIAE</i>). <i>Lloyd S. Davis and Frances T. McCaffrey</i>	379
SOURCES OF VARIATION IN GROWTH OF TREE SWALLOWS. <i>Terry E. Quinney, David J. T. Hussell, and C. Davison Ankney</i>	389
PROXIMATE AND ULTIMATE CAUSATION OF EGG SIZE AND THE "THIRD-CHICK DISADVANTAGE" IN THE WESTERN GULL. <i>Raymond Pierotti and Cheryl A. Bellrose</i>	401
OLD AGE AND BREEDING BEHAVIOR IN A TROPICAL PASSERINE BIRD <i>PLOCEUS CUCULLATUS</i> UNDER CONTROLLED CONDITIONS. <i>N. E. Collias, E. C. Collias, C. H. Jacobs, C. R. Cox, and F. A. McAlary</i>	408
IN MEMORIAM: W. RUDYERD BOULTON. <i>Melvin A. Traylor, Jr.</i>	420
SHORT COMMUNICATIONS	
Sexual Differences in the Spatial Distribution of Foraging in White-throated Sparrows (<i>Zonotrichia albicollis</i>). <i>Fred E. Wasserman</i>	421
Parental Behavior of a Bigamous Male Northern Mockingbird. <i>Randall Breitwisch, Ronald C. Ritter, and Julia Zaias</i>	424
Stomach Pumping: Is Killing Seabirds Necessary? <i>Peter G. Ryan and Susan Jackson</i>	427
A Safe and Accurate Method for Force-feeding Small Granivorous Birds. <i>Mary E. Murphy and James R. King</i>	429
<i>Philydor hyllobius</i> Wetmore and Phelps is a Synonym of <i>Automolus roraimae</i> Hellmayr. <i>Robert W. Dickerman, George F. Barrowclough, Peter F. Cannell, William H. Phelps, Jr., and David E. Willard</i>	431
Evolution of Hole-nesting in Birds: On Balancing Selection Pressures. <i>Sven G. Nilsson</i>	432
Frequency of Arthropods in Stomachs of Tropical Hummingbirds. <i>J. V. Remsen, Jr., F. Gary Stiles, and Peter E. Scott</i>	436
COMMENTARY	
Polygyny in Tree Swallows: Response to R. E. Simmons. <i>Terry E. Quinney</i>	442
BOOK REVIEWS. <i>Edited by William E. Southern</i>	444

BREWSTER AND COUES AWARDS	450
100 YEARS AGO IN <i>THE AUK</i>	305
NOTES AND NEWS	292, 298

NUMBER 3

FOOD PASSAGE AND INTESTINAL NUTRIENT ABSORPTION IN HUMMINGBIRDS. <i>William H. Karasov, Duong Phan, Jared M. Diamond, and F. Lynn Carpenter</i>	453
BODY SIZE AND CONDITION, TIMING OF BREEDING, AND ASPECTS OF EGG PRODUCTION IN EASTERN KINGBIRDS. <i>Michael T. Murphy</i>	465
EFFECTS OF BODY WEIGHT AND AGE ON THE TIME OF PAIRING OF AMERICAN BLACK DUCKS. <i>Gary R. Hepp</i>	477
METABOLISM, GROWTH, AND ACTIVITY IN ADÉLIE AND EMPEROR PENGUIN EMBRYOS. <i>Theresa L. Bucher, George A. Bartholomew, W. Z. Trivelpiece, and N. J. Volkman</i>	485
PREDATION AS A SELECTIVE FORCE ON FORAGING HERONS: EFFECTS OF PLUMAGE COLOR AND FLOCKING. <i>Gloria S. Caldwell</i>	494
THE RELATIONSHIP BETWEEN BODY MASS AND SURVIVAL OF WINTERING CANVASBACKS. <i>G. M. Haramis, J. D. Nichols, K. H. Pollock, and J. E. Hines</i>	506
SEARCH TACTICS OF INSECTIVOROUS BIRDS FORAGING IN AN AUSTRALIAN EUCALYPT FOREST. <i>Richard T. Holmes and Harry F. Recher</i>	515
FISH CROW PREDATION ON EGGS OF THE WHITE IBIS AT BATTERY ISLAND, NORTH CAROLINA. <i>Mark A. Shields and James F. Parnell</i>	531
THE SOCIAL SYSTEM OF THE TEXAS GREEN JAY. <i>Douglas C. Gayou</i>	540
DIFFERENTIAL TIMING OF SPRING MIGRATION IN WOOD WARBLERS (PARULINAE). <i>Charles M. Francis and Fred Cooke</i>	548
ABUNDANCE AND HABITAT SELECTION OF TWO AMERICAN KESTREL SUBSPECIES IN NORTH-CENTRAL FLORIDA. <i>Petra Bohall-Wood and Michael W. Collopy</i>	557
BEHAVIORAL AND ECOLOGICAL CORRELATES OF INTERFERENCE COMPETITION AMONG SOME HAWAIIAN DREPANIDINAE. <i>John H. Carothers</i>	564
SEABIRD GEOGRAPHIC VARIATION: SIMILARITY AMONG POPULATIONS OF LEACH'S STORM-PETREL. <i>Dennis M. Power and David G. Ainley</i>	575
OLFACTORY SENSITIVITY OF THE TURKEY VULTURE (<i>CATHARTES AURA</i>) TO THREE CARRION-ASSOCIATED ODORANTS. <i>Steven A. Smith and Richard A. Paselk</i>	586
A FIXED-RADIUS POINT COUNT METHOD FOR NONBREEDING AND BREEDING SEASON USE. <i>Richard L. Hutto, Sandra M. Pletschet, and Paul Hendricks</i>	593
IN MEMORIAM: JEAN (THEODORE) DELACOUR. <i>Ernst Mayr</i>	603
IN MEMORIAM: ROBERT CUNNINGHAM MILLER. <i>Robert T. Orr</i>	606
SHORT COMMUNICATIONS	
Is Long-distance Migration Possible for Soaring Hawks Using Only Stored Fat? <i>Neal G. Smith, David L. Goldstein, and George A. Bartholomew</i>	607
The First Documented Case of Polyandry for Wilson's Phalarope (<i>Phalaropus tricolor</i>). <i>Mark A. Colwell</i>	611
Oomorphy: A New Method. <i>Raivo Mänd, Agu Nigul, and Enok Sein</i>	613
Differential Digestion Rates of Prey by White-chinned Petrels (<i>Procellaria aequinoctialis</i>). <i>Sue Jackson and Peter G. Ryan</i>	617
Infanticide by a Male Parent and by a New Female Mate in Colonial Egrets. <i>Masahiro Fujioka</i>	619
An Assessment of Ground-nest Depredation in a Catastrophically Disturbed Region, Mount St. Helens, Washington. <i>Douglas C. Andersen and James A. MacMahon</i>	622
Brood Parasitism of Eastern Kingbirds by Brown-headed Cowbirds. <i>Michael T. Murphy</i>	626
A Taxonomic Reevaluation of the Plain Pigeon (<i>Columba inornata</i>). <i>Richard C. Banks</i>	629
Recovery of the Endangered Mauritius Kestrel from an Extreme Population Bottleneck. <i>Stanley A. Temple</i>	632
Airspeed and Heading of Autumnal Migrants over Hawaii. <i>Timothy C. Williams, Janet M. Williams, and Phillip D. Kloeckner</i>	634
<i>Calcarius lapponicus coloratus</i> in the Aleutian Islands, Alaska. <i>Daniel D. Gibson</i>	635
COMMENTARIES	
Does Food Limit Clutch Size in Prairie Ducks? <i>David C. Duncan</i>	637
Response to D. C. Duncan. <i>Frank C. Rohwer</i>	638
Design of Song Playback Experiments. <i>Donald E. Kroodsma</i>	640
BOOK REVIEWS. <i>Edited by M. Ross Lein</i>	643
100 YEARS AGO IN <i>THE AUK</i>	484
ERRATUM	539
NOTES AND NEWS	505, 530

NUMBER 4

MORPHOLOGICAL AND VOCAL VARIATION ACROSS A CONTACT ZONE BETWEEN THE CHICKADEES <i>PARUS ATRICAPILLUS</i> AND <i>P. CAROLINENSIS</i> . Mark B. Robbins, Michael J. Braun, and Emily A. Tobey	655
EXTENSIVE PROTEIN SIMILARITY OF THE HYBRIDIZING CHICKADEES <i>PARUS ATRICAPILLUS</i> AND <i>P. CAROLINENSIS</i> . Michael J. Braun and Mark B. Robbins	667
MITOCHONDRIAL DNA: A SOURCE OF GENETIC MARKERS FOR STUDIES OF SIMILAR PASSERINE BIRD SPECIES. Andrew L. Mack, Frank B. Gill, Robert Colburn, and Christina Spolsky	676
EGG FORMATION IN CASSIN'S AUKLET. Lee B. Astheimer	682
FEMALE CHOICE IN MIDDENDORFF'S GRASSHOPPER-WARBLER (<i>LOCUSTELLA OCHOTENSIS</i>). Hisashi Nagata	694
LOW GENIC VARIATION BETWEEN BLACK DUCKS AND MALLARDS. C. Davison Ankney, Darrell G. Dennis, Lisa N. Wishard, and James E. Seeb	701
THE DIET OF AMERICAN ROBINS: AN ANALYSIS OF U.S. BIOLOGICAL SURVEY RECORDS. Nathaniel T. Wheelwright	710
DAILY ACTIVITY PATTERNS OF SOUTH POLAR AND BROWN SKUAS NEAR PALMER STATION, ANTARCTICA. Pamela J. Pietz	726
A PHYLOGENETIC ANALYSIS OF RECENT ANSERIFORM GENERA USING MORPHOLOGICAL CHARACTERS. Bradley C. Livezey	737
POPULATION ECOLOGY OF THE LONG-BILLED CURLEW (<i>NUMENIUS AMERICANUS</i>) IN WESTERN IDAHO. Roland L. Redmond and Donald A. Jenni	755
ROLE OF SIBLING AGGRESSION IN FOOD DISTRIBUTION TO NESTLING CATTLE EGRETS (<i>BUBULCUS IBIS</i>). Bonnie J. Ploger and Douglas W. Mock	768
FORAGING BEHAVIOR OF GENTOO AND CHINSTRAP PENGUINS AS DETERMINED BY NEW RADIOTELEMETRY TECHNIQUES. Wayne Z. Trivelpiece, John L. Bengtson, Susan G. Trivelpiece, and Nicholas J. Volkman	777
FEMALE SITE FIDELITY AND POLYGYNY IN THE BLACKPOLL WARBLER (<i>DENDROICA STRIATA</i>). Bonita C. Eliason	782
DENSITY TRENDS AND RANGE BOUNDARY CONSTRAINTS OF FOREST BIRDS ALONG A LATITUDINAL GRADIENT. John T. Emlen, Michael J. DeJong, Michael John Jaeger, Timothy C. Moermond, Kurt A. Rusterholz, and Robin P. White	791
REIDENTIFICATION OF "PHALACROCORAX" <i>SUBVOLANS</i> BRODKORB AS THE EARLIEST RECORD OF ANHINGIDAE. Jonathan J. Becker	804
IN MEMORIAM: LESTER L. SNYDER. R. Charles Long and Jon C. Barlow	809
IN MEMORIAM: FINN SALOMONSEN. F. G. Cooch	811
IN MEMORIAM: FRANK RICHARDSON. Tony Angell	812
SHORT COMMUNICATIONS	
Dynamics of Nest Parasitism in Wood Ducks. Brad Semel and Paul W. Sherman	813
Songbird Carcasses Disappear Rapidly from Agricultural Fields. Richard Balcomb	817
Changes in Plasma Prolactin Associated With Laying and Hatch in the Spotted Sandpiper. Lewis W. Oring, Albert J. Fivizzani, and Mohamed E. El Halawani	820
Composition and Quantity of Feather Sheaths Produced by White-crowned Sparrows During the Postnuptial Molt. Mary E. Murphy and James R. King	822
Estimating Nest Detection Probabilities for White-winged Dove Nest Transects in Tamaulipas, Mexico. James D. Nichols, Roy E. Tomlinson, and Gary Waggener	825
Diving Depths of Atlantic Puffins and Common Murres. Alan E. Burger and Mark Simpson	828
COMMENTARIES	
The Possible Impact of Observer Bias on Some Avian Research. David F. Balph and H. Charles Romesburg	831
Mass or Weight: What Is Measured and What Should Be Reported? John W. Chardine	832
Why Hummingbirds Hover: A Commentary. F. Reed Hainsworth	832
Response to F. R. Hainsworth. Richard S. Miller	834
The Adaptive Significance of Anting. Paul R. Ehrlich, David S. Dobkin, and Darryl Wheye	835
BOOK REVIEWS. Edited by M. Ross Lein	836
REPORT OF THE AMERICAN ORNITHOLOGISTS' UNION COMMITTEE FOR THE CONSERVATION OF THE RED-COCKADED WOODPECKER. J. David Ligon, Peter B. Stacey, Richard N. Conner, Carl E. Bock, and Curtis S. Adkisson	848
100 YEARS AGO IN <i>THE AUK</i>	693
NOTES AND NEWS	681, 700, 709, 736, 808, 830
ERRATUM	835
INDEX TO VOLUME 103. Compiled by Michelle Palmer	856

SUPPLEMENTS

PROCEEDINGS OF THE ONE HUNDRED AND THIRD STATED MEETING OF THE AMERICAN ORNITHOLOGISTS' UNION.....	1AA-37AA
RECENT LITERATURE.....	1A-56A, 1B-31B, 1C-59C, 1D-53D
BYLAWS OF THE AMERICAN ORNITHOLOGISTS' UNION.....	1-6

DATES OF ISSUES OF "THE AUK"

VOL. 103, No. 1—31 JANUARY 1986

VOL. 103, No. 2—11 APRIL 1986

VOL. 103, No. 3—10 JULY 1986

VOL. 103, No. 4—21 OCTOBER 1986

THE AUK

A Quarterly Journal of Ornithology

PUBLISHED BY THE AMERICAN ORNITHOLOGISTS' UNION

Editor: ALAN H. BRUSH, Department of Physiology and Neurobiology, University of Connecticut, Storrs, Connecticut 06268.

Copy Editor: K. ELIZABETH K. PACALA

Editorial Board: J. F. LYNCH, D. MOCK, R. B. PAYNE

Associate Editors: FRED E. LOHRER (Periodical Literature), M. ROSS LEIN (Book Reviews)

THE AUK welcomes original reports dealing with the biology of birds, emphasizing the documentation, analysis, and interpretation of laboratory and field studies, theoretical or methodological developments, or reviews of existing information or ideas. Contributions are encouraged from throughout the world, but must be written in English.

SUGGESTIONS TO CONTRIBUTORS. Submit the typewritten original and two copies of the text, tables, and all other material to the Editor. Three copies of illustrations should be submitted. *All typewritten material must be double-spaced on one side of numbered 8½ × 11 inch (21½ × 28 cm) good quality bond paper, with at least 1 inch (2½ cm) margins. Originals typed on erasable, light weight, or mimeo bond will not be considered, but copies may be clear reproductions. Number pages through the Literature Cited. Avoid footnotes. The style of manuscripts should conform to general usage in recent issues. A cover page should contain the full title, a shortened version of the title (not to exceed 35 characters in length) for use as a running head, and your address at the time the research was conducted. Your present address, if different, should be given at the bottom of the first text page. The cover page should include the name and full address of the individual to whom proof is to be sent.*

Each article should be preceded by an Abstract not exceeding 5% of the length of the paper. The Abstract should recapitulate the findings of the paper, not describe the work done. Acknowledgments should follow the text and precede the Literature Cited. Scientific and English names of birds always should be given where first mentioned in the text, and should follow the A.O.U. Check-list of North American Birds and supplements or the appropriate equivalent unless departures are explained and defended. SI metric units should be used in all measurements. In general, abbreviations of statistical terms and mensural units should conform with the Council of Biology Editors (CBE) Style Manual, 4th ed. Use the 24-hour clock (0800 and 2030) and "continental" dating (1 July 1971).

Tables, which must not duplicate material in either the text or illustrations, are typewritten (**double-spaced throughout!**) separately from the text. Each table should contain a short but complete heading, and must not contain vertical rulings. *Illustrations* (including labels of coordinates) should be on 8½ × 11 inch (21½ × 28 cm) sheets, and must be mailed flat. The name of the author and the figure number should be penciled on the *back* of each figure. Legends should be typed consecutively (double-spaced) on a separate page. Drawings should be drafted with undiluted india ink, and be large enough to permit ½ to ⅓ reduction to the size that they will appear in print. Graphs may be drafted on coordinate paper ruled with light *blue* lines; do *not* use coordinate paper ruled with *green* lines. Use mechanical lettering, pressure transfer letters, or calligraphy; typewritten lettering is not acceptable. Lettering should be large enough to be easily readable after 50% reduction of the figure, but not overly large. Lettering style should be uniform among all figures for a manuscript, as should the size of lettering following reduction. Photographs should be glossy prints of good contrast and sharpness, and should be approximately the same size as they will appear in print. Letters and arrows on photographs are best applied by pressure-sensitive materials. The Auk is published in a double-column format; give careful attention to designing your tables and illustrations accordingly.

Literature citations for **all** manuscripts are listed (double-spaced!) in a Literature Cited section following the text and Acknowledgments. Text citations should include author and year (e.g. Darwin 1858), or, if more than two authors are involved, the first author and year (Jones et al. 1947). If critical matter is cited or quoted directly from longer works, indicate the pertinent pages (e.g. MacArthur 1972: 204). Citations of two or more works on the same topic should be cited in chronological order (e.g. Meanley 1971, Dyer 1975). For abbreviations and forms of titles of serial publications, follow the BIOSIS List of Serials. Consult recent issues of The Auk and the CBE Style Manual for additional details.

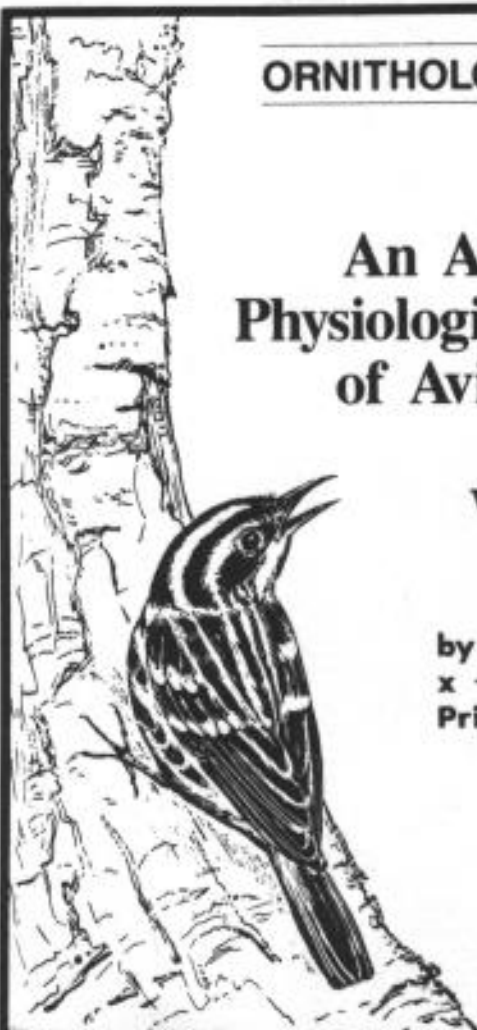
A more detailed set of instructions for contributors appeared in the Auk, Vol. 99, No. 1 (January 1982), copies of which are available from the Editor.

ORNITHOLOGICAL MONOGRAPHS No. 38

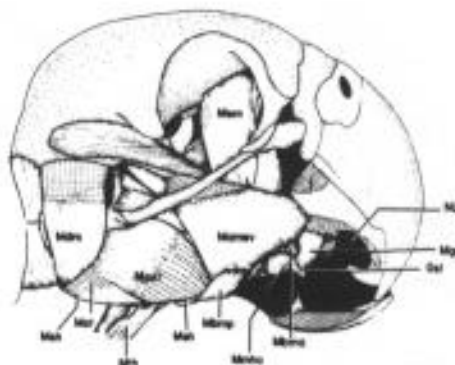
An Analysis of Physical,
Physiological, and Optical Aspects
of Avian Coloration with
Emphasis on
Wood-warblers

by Edward H. Burtt, Jr.
x + 126 pp. 1986
Price \$15.00 (\$12.50 to AOU members)

Order from: Frank R. Moore, Assistant
to the Treasurer, AOU, Dept. of Biology
University of Southern Mississippi,
Southern Station Box 5018,
Hattiesburg, Miss. 39406



ORNITHOLOGICAL MONOGRAPHS NO. 39



THE LINGUAL APPARATUS OF
THE AFRICAN GREY PARROT
PSITTACUS ERITHACUS LINNÉ
(AVES: PSITTACIDAE)
DESCRIPTION AND THEORETICAL
MECHANICAL ANALYSIS

Order from:
Frank R. Moore, Assistant to Treasurer
American Ornithologists' Union
Department of Biology
University of Southern Mississippi
Hattiesburg, Mississippi 39406-5018

BY
DOMINIQUE G. HOMBERGER
xi + 233 pp.
\$25.00 (\$20.00 to AOU Members)
MasterCard and VISA accepted