

For Your Safety and Enjoyment

To help you have a safe and enjoyable visit you may wish to consider these helpful hints in planning your fishing trip:

- ✓ Weather can be very unpredictable on the marsh, especially in early summer. Sudden rain or snow storms are not uncommon. One hint is to watch the clouds in the west. If clouds begin to creep down the slopes of the Ruby Mountains rather than simply passing over horizontally, head for shore. Be prepared for strong, gusty winds and rain or snow.
- ✓ The marsh is a maze of channels, islands, bulrush and open water, and even the most experienced visitors can become lost. If you are new to the area try to plan your first few trips with people familiar with navigating the marsh or do not get too adventurous. Markers are only on the main channel winding between the Main Boat Landing and Narciss Landing.
- ✓ If you plan an evening fishing trip try to return to the landing, or at least, a main channel before dark. This may take a great deal of restraint since the day's best fishing is often between sundown and dark. Consider the weather, your clothing and physical condition in timing your return. Also, it is always wise to take a light, blanket and warm clothes for everybody when you enter the marsh.
- ✓ If you do become lost, several things can speed your safe return. First, tell somebody on land what area you plan to fish and about when you plan to return. In the marsh, sound travels for a long distance, especially at night. Try yelling for directions from nearby fishermen. It may be a long night so stay dry and put on your warmest clothes. Try to beach on an island and wait for help. Use your overturned boat for shelter. Often enough brush is on the islands to start a small signal fire that can be seen easily from shore. If you know a party is in need of help in the marsh you are welcome to contact Refuge Headquarters for assistance.

Signs Protect Visitors and Resources

Millions of people visit National Wildlife Refuges every year. Millions! The impact of humanity descending upon Refuges, if not regulated in part, can degrade these wildlands. Signs grant or restrict certain activities to provide optimum freedom for visitors while also protecting Refuge elements from undue human abuse. Please respect the following signs:



This sign delineates the Refuge boundary. The Refuge is behind this sign. You may enter the Refuge only on designated access routes.



This area is closed to ALL entry. No fishing, boating, hunting or sightseeing is permitted. No roads or trails are open to the public. Closed areas are often set to protect nesting birds from disturbance by people.



This sign delineates portions of the Collection Ditch open to fishing. Only artificial lures may be fished here.



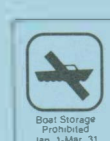
Posted on the perimeter of all dike roads where fishing is permitted from the dike shoulders. Look for these signs north of Brown Dike.



Posted on areas other than dike roads where fishing access is permitted.



Only Units 10 and 21 are open year-round to wading and the use of personal floatation devices (float tubes). You may wade or float these areas only when these signs are posted. Float tubes may be used June 15 to Dec. 31 in all the South Sump.



This sign is posted at the Narciss, Gravel Pit Pond, Brown Dike and Main boat landings. No boats of any kind may be stored on the Refuge between January 1 and March 31.



ACCOMMODATIONS for Refuge visitors are available in Elko, Wells and Ely.

GAS and limited supplies are available in Ruby Valley.

CAMPING is not permitted on the Refuge but camp sites are available at the Bureau of Land Management campground near Gallagher Fish Hatchery and at Forest Service campgrounds in the Humboldt National Forest. Primitive camping is allowed on all public land west of County Road 767 unless otherwise posted.

SWIMMING is prohibited on the refuge.

HANDICAPPED persons should fish with a partner and consult the Refuge Manager for suggestions for fishing the area safely. The Refuge covers a variety of habitats including rough, uneven terrain, deep waters, dense stands of bulrushes (tules), wet meadows and ditches, etc. Rainfall can make roads and fields muddy and slippery, making them more difficult to cover. Fishing difficulty varies by area and everyone should examine their own abilities and limitations before using the Refuge.

For More Information, Write:

Refuge Manager
Ruby Lake National Wildlife Refuge
Ruby Valley, Nevada 89833
Phone (702) 779-2237



DEPARTMENT OF THE INTERIOR
U.S. FISH AND WILDLIFE SERVICE

RF14570-9

April, 1983

I 49.44/2:R82h

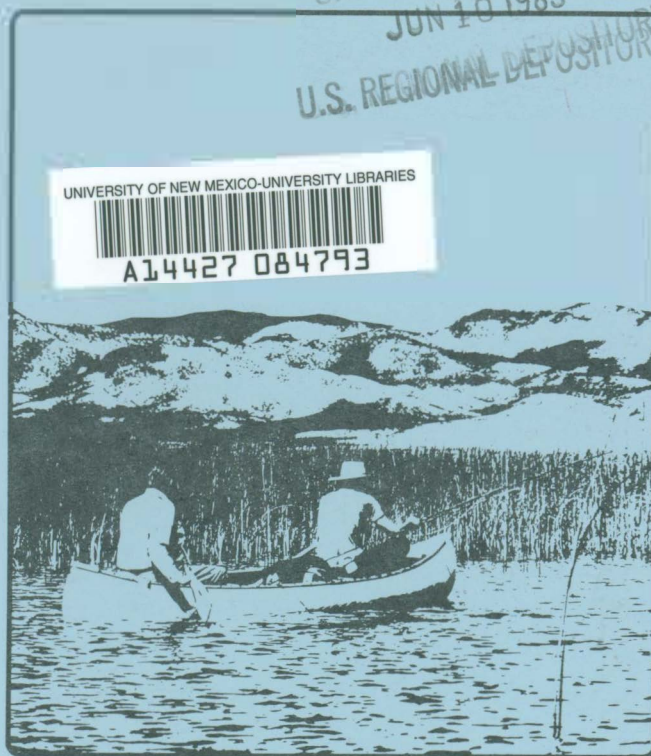
PAM FILE

Fishing & Boating

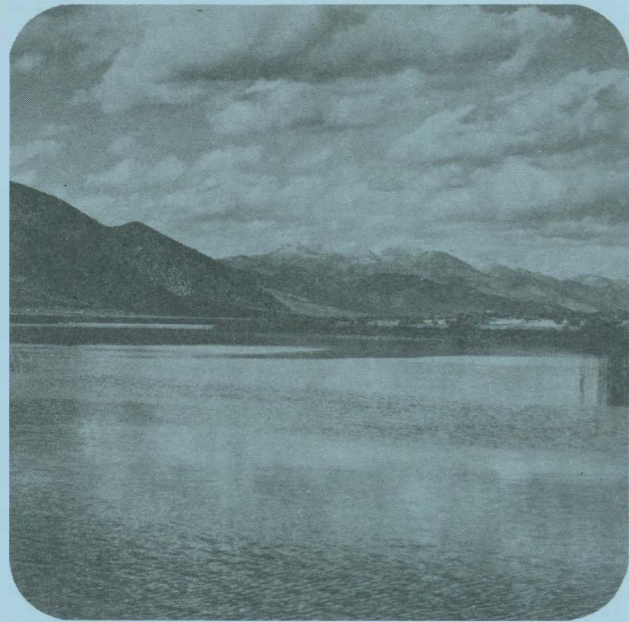
Ruby Lake National Wildlife Refuge

Nevada

UNIV. OF NEW MEXICO
JUN 10 1983
U.S. REGIONAL DEPOSITORY



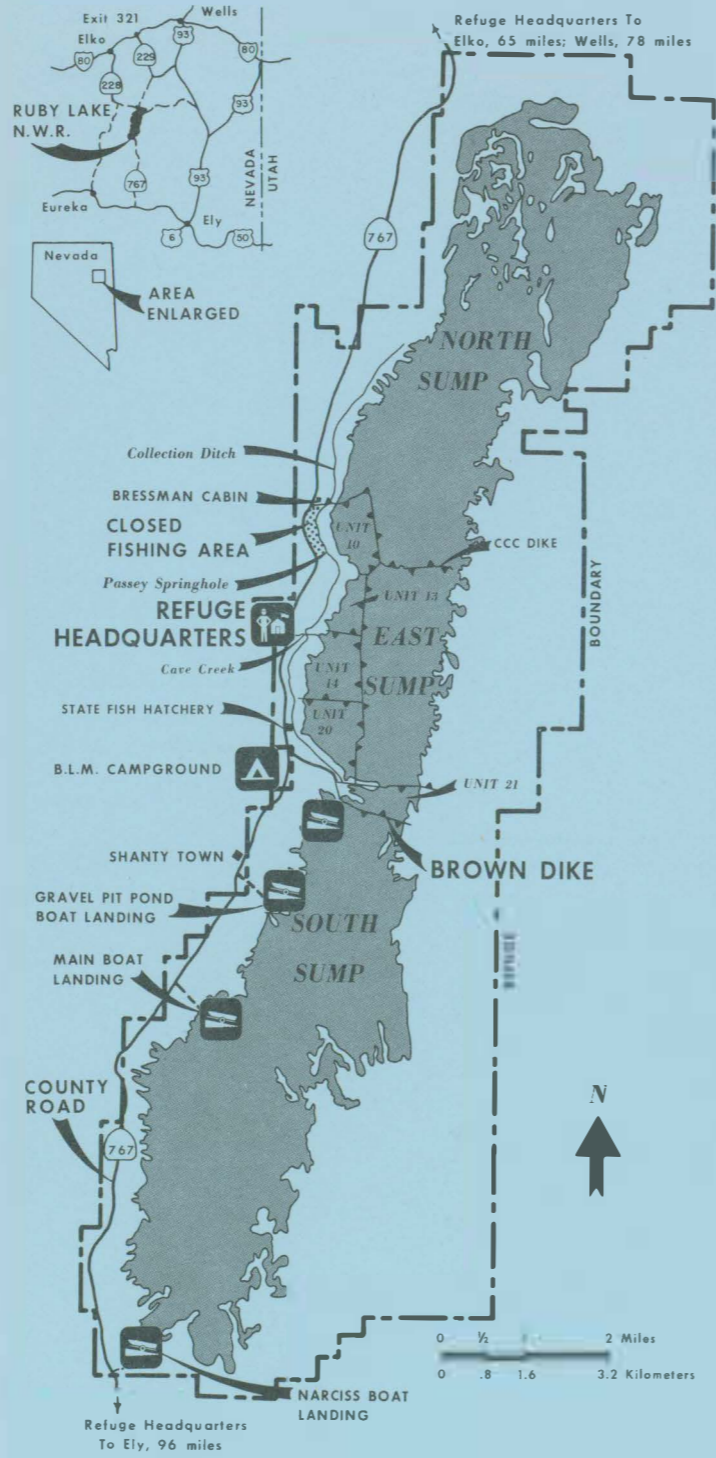
Ruby Lake National Wildlife Refuge



Ruby Lake National Wildlife Refuge lies within a closed drainage basin in Ruby Valley of northeastern Nevada. The refuge is 65 miles southeast of the town of Elko and lies along the eastern flank of the rugged and scenic Ruby Mountains at an elevation of 6,000 feet above sea level.

The 37,630-acre refuge consists of marshes, open ponds and islands, bordered by wet meadows and grass and sagebrush-covered uplands. The Refuge is an important waterfowl nesting area and is strategically located along migration corridors serving both the Pacific and Central Flyways. Trout and bass abound in the marsh.

Fishing has become the greatest attraction for the Refuge visitor. Fishing and boating are allowed on the Refuge, however, access to the marsh must be restricted to provide protection and security to nesting and migrating waterfowl.



Fishing

Size, Season, and Limits:

The Refuge is open year-round to fishing except in those areas posted as closed. Hours are 1 hour before sunrise until 2 hours after sunset.

Although no legal size limit is established for any species on the refuge the bass fishery would be improved if anglers kept only fish larger than 10". This would allow bass to reach spawning size before they were subjected to angler harvest. Your cooperation will increase the quality of your future fishing.



The State of Nevada fishing limits apply to Ruby Lake. Daily and possession limits are 5 trout. For black (largemouth) bass from January 1 through June 14 the daily and possession limit is 5 fish.

From June 15 through December 31, after the bass nesting season concludes, the limit is raised to 15 fish. Rainbow, brook and brown trout are most abundant on the north end of the lake. The bass are most common in the South Sump.

Bank fishing ONLY is permitted in the area north of the Brown Dike and east of the Collection Ditch, except in units 10 and 21 where wading and personal floating devices (float tubes) are permitted when designated (posted) by the Refuge Manager.

Closed Waters:

Fishing is prohibited from the west bank of the Collection Ditch of the Ruby Lake National Wildlife Refuge between the Bressman Cabin and Passey Springhole, in the hatchery rearing and brooding ponds, Cave Creek west of the County Road and from the dike between Units 14 and 20 as posted.

Artificial Lures and Bait:

Those portions of the Collection Ditch and associated springs which are open to fishing may be fished ONLY WITH ARTIFICIAL LURES. Possession or use of live or dead bait fish is prohibited anywhere on the Refuge.

Ice Fishing:

Refuge waters are open to ice fishing. However, vehicle access to Ruby Lake is more difficult in the winter when Harrison Pass is closed by snow. The drive from Elko is 90 miles in winter and only 65 miles when the pass is open.

Boating

North of Brown Dike:

Year-round: No boats permitted but use of float tubes is permitted in portions of Units 10 & 21 as posted.

South of Brown Dike: (South Sump)

January 1 through June 14. Boats and float tubes prohibited.

June 15 through July 31. ONLY motorless boats and float tubes and boats with electric motors are permitted.

August 1 through December 31. Motorless boats, float tubes and boats propelled by motors with a total of 10 horsepower or less are permitted.

Year-round: Water skis, jet skis and all terrain vehicles are not permitted at any time.

Boat Launching:

Boat launching allowed ONLY at Main Boat Landing, Gravel Pit Pond, Narciss, and from the Brown Dike. Narciss, Gravel Pit Pond and Brown Dike are unimproved landings suitable for launching canoes or cartop boats. When parking vehicles at these landings, please park so that they do not obstruct vehicle travel or the launching site.

