



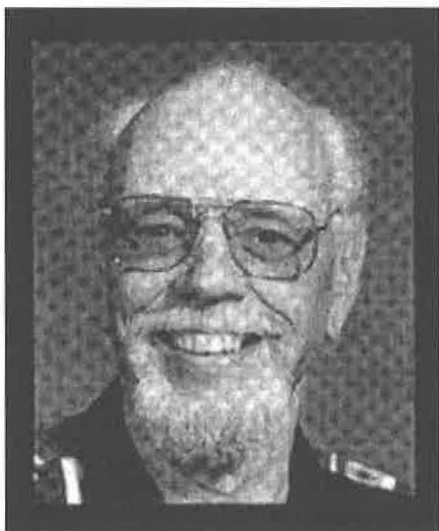
Eastern Regional News

Eastern Bird Banding Association

Founded 1923

Due to a print error in *NABB* Vol. 41 No.4, In the Eastern Regional Section, Pg. 191, the second half of the Most Commonly Banded Species table was not printed. The second half of that table is printed below.

Powdermill, PA		Penn State Arboretum, PA		Mt. Nebo, MD		Allegheny Front, WV	
	% HY		% HY		% HY		% HY
421 MAWA (7)	66%	144 GRCA (2)	65%	127 GRCA (3)	80%	619 BTBW (1)	86%
359 GRCA (9)	82	45 WTSP (1)	42	113 SOS (1)	85	519 BTNW (2)	96
327 SWTH (10)	89	16 NOCA (3)	81	76 WTSP (4)	46	319 BLBW (10)	59
322 DEJU (4)	38	15 TUTI	73	49 RCKI (6)	45	280 BLPW (3)	70
305 MYWA	78	12 EATO (6)	83	34 COYE (8)	82	194 MAWA (7)	93
296 RCKI (2)	41	9 SOS (4)	33	34 CEDW (2)	88	155 CMWA (5)	61
276 RTHU (3)	91	7 SWTH	29	25 SWSP	88	156 COYE (6)	95
263 WTSP (6)	48	7 WOTH	43	25 AMRO	64	85 TEWA (4)	85
258 AMGO (1)	55	7 BRTH	29	24 DEJU	37	70 BBWA	90
227 SOS (8)	61	7 OVEN	57	18 PUF	56	64 OVEN	83



Walter Phillips Protzman

Memorium

25 August 1930 - 1 July 2016

In memory of Walter Phillips Protzman who passed away at home in Bee Cave, Texas, at age 85.

Walt was born in Englewood, NJ, he served in the Korean War, attended Rutgers Univ. Graduate School and built a career as an immunologist for Schering Plough. Post retirement, he volunteered for the Austin middle schools where he received the honor of "Volunteer of the Year."

He had many interests including photography, birding, flying, traveling, and opera to name a few. He served as the Eastern Bird Banding Association President in 1984.

Walt is survived by his children Janine, Wende, and Thomas, and nine grandchildren.