

THE MIGRANT

A QUARTERLY JOURNAL
DEVOTED TO TENNESSEE BIRDS

Published by
THE TENNESSEE
ORNITHOLOGICAL
SOCIETY



Alphans
36

MARCH, 1982
VOL. 53, NO. 1

THE MIGRANT

A QUARTERLY JOURNAL OF ORNITHOLOGY

FIRST PUBLISHED, JUNE 1930

PUBLISHED BY
THE TENNESSEE ORNITHOLOGICAL SOCIETY
Founded at Nashville, Tenn., 7 October 1915
A non-profit, educational, scientific, and conservation organization.

EDITORIAL STAFF

Editor—Charles P. Nicholson, Box 402, Norris, TN 37828
State Count Compiler—Richard Lura, 102 Terrace Court GB, Johnson City, TN 37601
Editorial Advisors—T. David Pitts, Morris D. Williams

OFFICERS FOR 1981-1983

President—Michael L. Bierly, 3825 Bedford Ave., Nashville, TN 37215
Vice Presidents:
East Tenn.—Rick Knight, 804 North Hills Dr., Johnson City, TN 37601
Middle Tenn.—Dan Gray, 5004 Mt. Pleasant Pike, Columbia, TN 38401
West Tenn.—Robert L. Browne, 825 Ridge Lake Rd., Suite #300, Memphis, TN 38138
Directors-at-Large:
East Tenn.—Mrs. Howard Young, 1909 East Sevier Ave., Kingsport, TN 37664
Middle Tenn.—Robbie Hassler, Box 1, Byrdstown, TN 38549
West Tenn.—T. David Pitts, Biology Dept., U.T.M., Martin, TN 38237
Curator—James T. Tanner, Rt. 28, Box 155, Knoxville, TN 37920
Secretary—Pat Stallings, 406 North 17th St., Nashville, TN 37206
Treasurer—George R. Payne, 6643 Monmouth Dr., Memphis, TN 38119

All TOS members receive *The Migrant* and the *TOS Newsletter*, *The Tennessee Warbler*. The *Newsletter* carries information about meetings, forays, and club activities.

Annual dues, \$6.00; Sustaining, \$10.00; Life, \$150.00; Student (under 18 years), \$3.00; Family, \$7.00; (chapters may collect additional fees to cover local expenses). Dues, contributions, and bequests are deductible from Federal income and estate taxes. Back numbers may be had from Dr. James T. Tanner, Rt. 28, Box 155, Knoxville, Tenn. 37920. Correspond with the Treasurer for subscriptions, memberships, and changes of address.

Published quarterly (March, June, September, and December). Printed by Mallicote Printing Inc., 509-511 Shelby Street, Bristol, Tennessee 37621, U.S.A. Postage paid and mailed at Elizabethton, Tennessee 37643, U.S.A.

THE MIGRANT

Published by the Tennessee Ornithological Society,
to Record and Encourage the Study of Birds in Tennessee.
Issued in March, June, September, and December.

VOL. 53

MARCH, 1982

NO. 1

FIRST RECORD OF OCCURRENCE AND POSSIBLE NESTING OF BLACK-BELLIED WHISTLING-DUCK IN TENNESSEE

T. DAVID PITTS

During late summer and fall 1978, a pair of Black-bellied Whistling-Ducks (*Dendrocygna autumnalis*) nested at Reelfoot Lake in northwestern Tennessee. I first observed the pair on 30 August 1978, in Broad Slough which is at the boundary of Obion and Lake Counties. Prior to this I had received several reports of "odd" ducks near the Kiwanis Park on the southeastern shore of Lower Blue Basin of Reelfoot; I dismissed these reports as being observations of molting domestic or semi-domestic ducks commonly seen along this area. Comments by W. L. Smith of the UTM Biology Department convinced me to investigate these reports. Initial observations of 2 long-legged ducks with contrasting black and white wings, black abdomens, red bills, and pink legs and feet established the identity.

Apparently the pair had been at Reelfoot since at least 1 August 1978; possibly they arrived during July. Numerous TOS members saw the pair in August and September, usually in the area between the Spillway and the Kiwanis Park. The disappearance of one bird in September led to speculation about its death or departure. This speculation ended with the appearance of both adults and 8 young on 7 and 8 October 1978. All sightings of the young were in the same area where the adults were previously seen. No documentation of the presence of the young birds is known. W. L. Smith and I searched the area repeatedly on 9 October in an effort to locate and photograph the young; we did not see adults or young. I talked (on 9 October) with a pair of Illinois fishermen who were in the area on 8 October. They accurately described the adults and the young; they also confirmed earlier reports of 8 young. Several local residents, who by now were very familiar with the adults, reported observing 8 young. Neither adults nor young were observed again. Almost certainly the young did not survive. The nest site was not identified.

The adults gave no indication of being domestic or escapees from captivity. While they would tolerate quiet human approach by boat to within approximately 75 yards, they rarely allowed closer views. Photographs by W. L. Smith, Paul Crawford, P. Bond (Figure 1), and the *Lake County Banner* are known to exist.

Black-bellied Whistling-Ducks typically nest along southern coastal Texas through coastal Mexico and Central America into Argentina (Bellrose 1976:80-

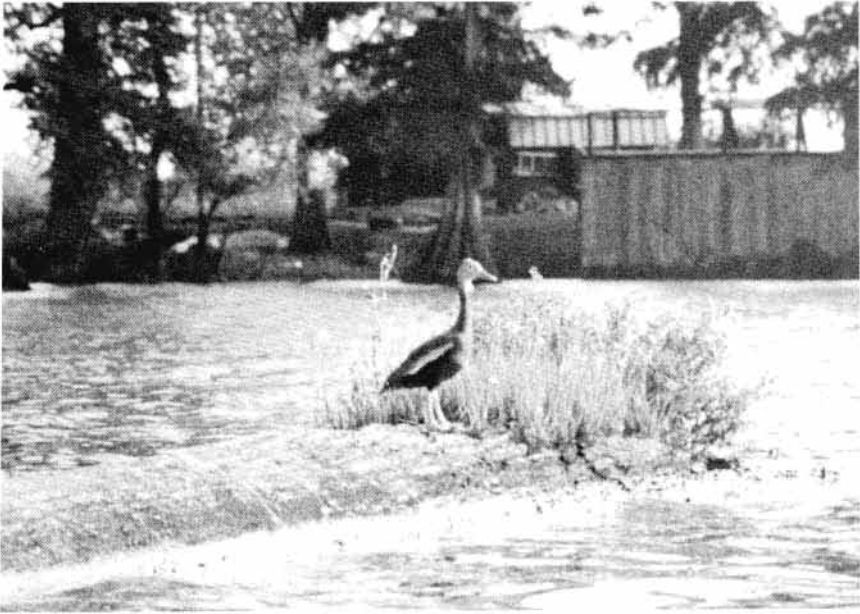


FIGURE 1. Black-bellied Whistling-Duck at Reelfoot Lake, Tennessee. Photograph by Pete Bond, Union City, Tennessee.

81). While most Black-bellied Whistling-Duck clutches are laid in April and May in lower Texas, some clutches were begun in August (Bolen 1967). Normally cavities, such as nest boxes are used, although ground nests have been found (Bellrose 1976:83). Clutch size averages 13.4 with an incubation period of 28-30 days (Bolen 1967). If the assumptions are made that the Reelfoot pair had 8 eggs which were incubated approximately 28 days and that hatching occurred on 6 October, the first egg was laid on approximately 1 September.

The United States range of Black-bellied Whistling-Ducks is mainly limited to southern Texas, but sightings have been made as far east as Jekyll Island, Georgia (Teulings 1977), as far west as California (McCaskie 1977), and as far north as Iowa (Barratt 1977). The nesting at Reelfoot may be the northernmost reported to date for the species. The occurrence and nesting of Black-bellied Whistling-Ducks at Reelfoot are more plausible when we consider that Black-bellied Whistling-Ducks have been sighted in other areas much further from Texas, that the species has a long nesting season, that some pairs renest after successful nests, and that the species can adapt to a variety of nesting sites.

LITERATURE CITED

- BARRATT, B. 1977. Black-bellied Whistling Duck, a new species for Iowa. Iowa Bird Life 47:104-106.

- BELLROSE, F. C. 1976. Ducks, geese and swans of North America. Stackpole, Harrisburg, Pennsylvania.
- BOLEN, E. G. 1967. The ecology of the Black-bellied Tree Duck in southern Texas. Unpublished Ph.D. thesis, Utah State University, Logan. Abstr. only in Diss. Abstr. 29:1224-B, 1968.
- MCCASKIE, G. 1977. Southern Pacific Coast Region. *Am. Birds* 31:1189.
- TEULINGS, R. P. 1977. Southern Atlantic Coast Region. *Am. Birds* 31:987.

Department of Biological Sciences, The University of Tennessee at Martin, Martin, Tennessee 38238. Accepted 1 May 1982.

BOOK REVIEW

A GUIDE TO BIRD FINDING WEST OF THE MISSISSIPPI, 2nd Ed. By Olin Sewall Pettingill, Jr., illus. by George Miksch Sutton. 1981. New York, Oxford University Press. 783 pp. \$25.00. Pettingill's original eastern bird-finding guide, published in 1951, was the first such work to cover a large geographic area. Two years later, the first edition of the western guide was published. And now we have a revised second edition of the western guide. The years between the two editions have seen changes in the population of both humans and birds, construction of the interstate highway system, immense growth of birding as a pastime, and the publication of many bird-finding guides covering states or smaller areas.

For each western state (except Hawaii and Alaska), Pettingill gives a description of the major physiographic regions and vegetation types, as well as typical birds of the different habitats. Some state accounts were written by residents or other familiar with the state. The remainder were authored by Pettingill, and local authorities are acknowledged from most states. Within each state, individual birding areas are listed under headings of cities or towns. A good road atlas is an essential companion to this book, which contains no maps.

Many of the site descriptions are not as detailed as those found in other bird-finding guides, which are often cited in the state accounts. On a recent trip to Albuquerque, I found the accounts more than adequate, however. With its broad area coverage and species lists, this book will be of great value to Tennessee birders planning trips west, even if no further than Blytheville or Horseshoe Lake, Arkansas.

CHARLES P. NICHOLSON

THE 1981 CHRISTMAS BIRD COUNT

RICHARD D. LURA

This year 136 species were recorded on the 20 counts submitted for publication. This was an increase in the number of counts over the last few years, but below the number published in the mid-1970's. The species total has been exceeded on only 3 previous counts.

After a bitterly cold first weekend, weather during the count was mild, and only one count reported rain. Many songbirds were reported in lower than average numbers, perhaps because abundant crops of wild food failed to concentrate birds at feeders. Purple Finches were in low numbers and were outnumbered by House Finches on some East Tennessee counts. Fourteen species of sparrows were recorded. The "Caribbean Coot" at Chattanooga appeared on a Tennessee Christmas count for the first time.

INFORMATION ON THE COUNTS

MEMPHIS — 20 Dec.; 0645 to 1700; clear, A.M., cloudy, P.M.; temp. 17 to 36° F; wind NW, 5-10 mph; 34 observers in 13 parties; 128 party hours (97 on foot, 31 by car); 196 party miles (76 on foot, 120 by car).

Diane and William Bean, Rob Browne, Carolyn Bullock, Fred T. Carney, Tina Carpenter, Robert Casey, Lula C. and Ben B. Coffey, Jr. (compilers, 672 N. Belvedere 38107), Dollyann Daily, Dr. Julian Darlington, Helen B. Dinkelspiel, Jack and Katherine Embury, Jim and Sue Ferguson, Bob Ford, Wm. B. Fowler, Jr., Joe B. Guinn, Gerald Papachristou, George R. Payne, Jr., Rob and Wm. P. Peoples, David Phillips, Ernest Restivo, Richard G. Taylor, Julia Thompson, Dr. Howard H. Vogel, Jr., Steve J. Wagner, Martha Waldron, Bobby and Dr. Wendell L. Whittemore, Jeff Wilson, and Patricia Wood.

REELFOOT LAKE — 19 Dec.; 0515 to 1630; temp. 13 to 31° F; wind, NW, 0-3 mph; 13 observers in 5 parties; 43 party hours (13 on foot, 30 by car); 336 party miles (18 on foot, 318 by car).

Joel Bonnell, Ben Coffey, Lula Coffey, Wendell Crews, Bill Fowler, Van Harris, Ken Leggett, Don Manning (co-compiler), Gina Manning (co-compiler — Box B, Bells 38006), Tom Miller, Latta Richards, Michel Todd, Jeff Wilson.

Seven of the Snow Geese were of the blue form. Sixty-eight of the Bald Eagles were adults. Seen count week: Common Snipe, Turkey Vulture, Black Vulture.

BUFFALO RIVER — 28 Dec.; 0615 to 1830; temp. 44 to 55° F; wind, light; 11 observers in 5 parties; 47 party hours (14 on foot, 33 by car); 215 party miles (21 on foot, 194 by car).

Andy Augustine, David Beckman, Helen Clayton, Lloyd Clayton (compiler — Rt. 4, Box 175A, Lawrenceburg 38464), Jane Egley, Chester McConnell, Dot McConnell, Royce Neidert, Mark Reeves, Damien Simbeck, Don Simbeck.

Good details were submitted on the Short-eared Owl. Seen count week: Great Horned Owl.

ASHLAND CITY — 19 Dec.; 0500 to 1730; temp. 8 to 28° F; wind, W-NW, 5-8 mph; 18 observers in 7 parties.

Jan Alexander, John Bates, Michael Bierly, John Ellis, Craig Empson, Bill Finch, Lucy Finch, Mary Ann Guschke, Tom Guschke, Tom Harston, Kathy Lee, Rocky Milburn, Jim Snapper, Pat Stallings (compiler — 406 N. 17 Street, Nashville 37206), Carol Stewart, Dee Thompson, Lawrence Trabue, Sara Jo White.

Good details on all unusual species. One Bald Eagle was an adult.

COLUMBIA — 26 Dec.; 0500 to 1700; temp. 30 to 47° F; wind, SE, 0-15 mph; 15 observers, 9 in 4 parties plus 6 at feeders; 34 party hours (19 on foot, 15 by car); 220 party miles (10 on foot, 210 by car).

Elizabeth Anderson, Kenneth Anderson, Sarah Early, Barbara Finney, Jim Finney, William Fuqua, Daniel Gray, William Jernigan, Anne Lochridge, Bedford Lochridge, Cleo Mayfield, George Mayfield (compiler — 999 Sunnyside Drive, Columbia 38401), Allen Pressnell, Nancy Thomas, Mitzi Thornell.

Seen count week: Peregrine Falcon, Bewick's Wren.

NASHVILLE — 26 Dec.; 0530 to 1800; A.M. mostly cloudy, P.M. overcast; temp. 36 to 48° F; wind, S, 0-15 mph; 48 observers in 8 parties and 13 feeders; 80 party-hours (52.5 on foot, 27.5 by car) plus 13 at feeders, 3.5 owling; 258 party-miles (27 on foot, 233 by car).

Jan Alexander, Mildred Ansley, John Bates, Willa Bates, Michael Bierly (compiler — 3825 Bedford Avenue, Nashville 37215), Vaunez Brakebill, Jane Bridgman, Jean Cobb, Annella Creech, Milbrey Dugger, Clifton Dunn, John Ellis, Charles Farrell, Clara Fentress, Anne Fort, Bettye Brown Fort, Combs Fort, John Fort, George Freeman, Katherine Goodpasture, Sarah Greene, Mary Anne Guschke, Tom Guschke, Tom Harston, Galen Lenhart, Adiene Lyon, Portia Macmillan, Jane Maynard, Jim McLaughlin, Joe McLaughlin, John McLaughlin, Dick Porter, Virginia Price, Elizabeth Queener, Bob Sharp, Lillian Sharp, William Sharp, Jim Snapper, Pat Stallings, Helen Sterling, Dee Thompson, Lawrence Trabue, David Vogt, Kenneth Walkup, Sarah Walkup, Cliff Whiteside, Hardy Wilcoxon, Virginia Workman.

Good details on unusual species.

HICKORY-PRIEST — 2 Jan.; 0530 to 1630; temp. 27 to 61° F; wind, S-SE, 2-32 mph; 33 observers, 30 in 7 parties plus 3 at feeders.

Frances Abernathy, Jan Alexander, Vivian Anderson, Linda Anderson, John Bates, Michael Bierly, Annella Creech, Clifton Dunn, Beth and H. F. Evans, Katherine Goodpasture, Tom Harston, Carol Knauth, Carol and Hazel Kramer, Kathy Lee, Joe McLaughlin, Rocky Milburn, P. J. New, Marge and Oscar Patrick, Betty Richards, Steve Rannels, Pat Stallings, compiler, Carol Stewart, Ray Stiles, Ann Tarbell, Dale and Janet Townsend, David Vogt.

Good details on all unusual species.

CLARKSVILLE — 2 Jan.; 0630 to 1530; temp. 30 to 58° F; wind, variable, 0-5 mph; 29 observers, 11 in 5 parties plus 18 at feeders; 42¼ party hours (18 on

foot, 24¼ by car); 292 party miles (18¾ on foot, 274¼ by car).

Joe Allen, Adney Cross, Melinda Filson, Mike Filson, Floyd Ford, Scott Gunn, Phila Hach, Annie Heilman, Nita Heilman, William Hudson, Nancy Hughes, Ellen Hutchinson, Mary Jackson, David Joiner, Edna Lyle, Thurston

THE 1981 CHRISTMAS BIRD COUNT

	Merr	Peel	Clar	Lawr	Asnl	Colu	Nash	Hick	Marf	High	Cook	Chat	Hlwa	Knox	OSM	Grese	King	Elliz	Bris	Roan
Common Loon	--	--	--	--	--	--	--	18	--	--	9	--	--	--	--	--	--	2	2	--
Horned Grebe	--	--	--	--	--	--	--	238	--	4	--	--	--	--	--	--	--	1	2	--
Pied-billed Grebe	8	2	3	8	8	--	3	39	--	29	3	108	19	16	--	--	13	2	12	--
Dbl.-cr. Cormorant	--	--	--	--	--	--	--	--	--	--	--	3	--	--	--	--	--	--	--	--
Great Blue Heron	20	24	12	--	39	12	9	76	5	2	1	16	133	6	--	14	14	1	9	--
Blk.-cr. Night Heron	--	--	--	--	1	--	--	8	--	--	--	--	2	--	--	29	--	--	--	--
Carolina Goose	101	14W	--	41	325	215	44	828	--	392	--	--	681	146	50	54	--	--	--	--
White-fr. Goose	--	12	--	--	--	2	--	6	--	--	--	--	1*	--	--	--	--	--	--	--
Snow Goose	--	10*	--	--	--	--	--	--	--	--	--	--	5.5W	66	2.1M	375	45	304	--	--
Mallard	230	68W	54	25	1.5W	95	30	566	--	720	--	355	5.5W	66	--	--	--	--	--	--
Black Duck	4	1.6W	3	2	570	26	1	13	--	8	--	39	352	--	--	116	79	24	25	--
Blackwall	1	80	--	--	105	90	34	23	--	--	--	55	103	22	7	--	--	--	--	--
Pintail	125	--	--	--	30	5	--	--	--	--	--	4	55	--	8	--	--	--	5	--
Green-wg. Teal	1	220	--	--	8	--	--	--	--	--	--	3	51	3	--	4	--	--	3	--
Blue-wg. Teal	--	20	--	--	--	2	--	--	--	--	--	--	--	--	--	--	--	--	--	--
American Mergon	3	6.5W	--	--	20	2	30	--	--	--	--	19	65	10	5	4	1	1	1	--
Northern Shoveler	1	80	--	--	--	--	--	--	--	--	--	2	3	2	--	1	--	--	--	--
Wood Duck	5	20	4	--	8	85	--	1	--	--	--	15	--	--	9	16	--	3	--	--
Redhead	10	35	1	--	3	3	1*	2	--	--	--	1	--	--	1	--	--	--	--	--
Ring-necked Duck	20	2.2W	--	65	40	185	200	--	--	--	--	8	4	7	2	45	12	22	--	--
Carvasback	101	8	--	--	--	13	22	3	--	--	--	199	--	--	--	--	--	--	--	--
Greater Scaup	--	--	--	--	6	6	118	77	--	36	--	40	17	5	--	15	3	--	--	--
Lesser Scaup	39	--	--	--	--	--	--	--	--	--	--	28	--	--	--	--	--	--	--	--
Scaup sp.	65	--	3	--	8	--	13	14	--	7	--	--	--	--	--	--	--	--	--	--
Common Goldeneye	2	15	--	3	8	--	--	--	--	--	--	--	--	--	--	--	--	--	16	--
Bufflehead	--	25	--	14	--	--	47	31	--	30	--	28	4	8	--	15	26	34	--	--
Oldsquaw	--	--	--	--	--	--	--	--	--	--	--	--	--	--	--	--	--	1*	--	--
White-winged Scoter	--	--	--	--	--	--	1*	--	--	--	--	3*	--	--	--	--	--	--	--	--
Surf Scoter	--	--	--	--	--	--	1	3	--	--	--	--	1	1	2	--	--	--	--	--
Ruddy Duck	20	3.5W	--	3	--	--	1	--	--	--	--	--	--	--	--	--	--	--	--	--
Hooded Merganser	--	20	--	--	--	14	--	15	--	--	4	13	53	10	--	--	--	--	--	--
Common Merganser	--	6	--	--	--	--	--	1	--	--	2	--	--	--	--	4	--	--	--	--
Red-br. Merganser	--	2	--	--	--	8	--	--	--	--	--	--	--	--	--	--	--	--	--	--
Turkey Vulture	--	66	50	51	82	245	20	--	16	--	1	1	1	--	5	15	3	24	1	1
Black Vulture	--	--	6	4	82	245	20	--	4	--	--	1	--	1	3	115	--	11	--	--
Goshawk	--	--	--	--	1*	--	--	1	--	--	--	3	4	1	--	1	1	--	1	2
Sharp-sh. Hawk	--	--	--	1	1	1	1	1	--	--	--	2	3	3	--	1	4	--	3	--
Cooper's Hawk	--	--	3	--	--	--	--	--	--	--	--	--	--	--	--	--	--	--	--	--
Accipiter sp.	1	1	--	--	1	1	1	1	--	--	--	--	--	--	--	7	11	5	8	3
Red-tailed Hawk	74	41	26	8	41	15	34	21	13	--	1	39	14	45	--	--	--	--	--	--

Lee, Evelyn Nixon, James Nixon, Bill Milliken, Gloria Milliken, Cathy Petty, Mrs. John Rubel, Besse Sharp, David Snyder (compiler — Rt. 1, Box 6B, Palmyra 37142), Ellen Walker, Woodrow Walker, Priscilla Weathersby, John Wheatley, Barbara Wilbur.

No details of the Rough-legged Hawk were submitted.

	Wing	Feet	Claw	Lower	Asht.	Coou	Nash	Hick	MartF	High	Cook	Chat.	Hwa	Knox	OSPN	Greec	King	ELLz	Brlz	Roan.
Red-shld. Hawk	4	10	9	1	15	—	1	4	1	—	1	2	3	2	—	1	—	—	—	—
Rough-legged Hawk	—	—	—	—	—	—	—	—	—	—	—	—	—	—	—	—	—	—	—	—
Bald Eagle	13	118*	3*	5	2*	1	1	2	1	—	1	2	3*	1*	1	1	—	—	1	—
Marsh Hawk	—	—	3	—	—	—	—	—	—	—	—	—	—	—	—	—	—	—	—	—
Osprey	—	—	—	—	—	—	—	—	—	—	—	—	—	—	—	—	—	—	—	—
American Kestrel	18	31	26	11	32	22	42	37	38	—	16	20	7	16	5	3	14	9	29	1
Ruffed Grouse	119	12	27	25	28	47	35	36	38	—	16	20	7	16	8	2	1	—	1	1
Bobwhite	10	11	—	—	—	—	—	—	—	—	—	—	—	—	—	—	—	—	—	—
Turkey	—	—	—	—	—	—	—	—	—	—	—	—	—	—	—	—	—	—	—	—
Virginia Rail	—	—	—	—	—	7	—	—	—	—	—	—	—	—	—	—	—	—	—	—
Sora	35	212M	—	12	2	4	11	116	1	—	—	927	475	411	—	—	14	—	—	—
American Coot	—	—	—	—	—	—	—	—	—	—	—	—	—	—	—	—	—	—	—	—
Caribbean Coot	—	—	—	—	—	—	—	—	—	—	—	—	—	—	—	—	—	—	—	—
Killdeer	81	12	5	15	44	2	79	45	9	13	1	116	305	64	32	15	30	23	3	—
American Woodcock	—	—	—	—	1	3	2	1	—	—	1	2	—	1	—	—	—	—	—	—
Common Noddy	37	—	1	1	4	2	3	5	1	—	12	11	29	21	3	—	—	11	—	—
Spotted Sandpiper	—	—	—	—	—	—	—	—	—	—	—	—	—	—	—	—	—	—	—	—
Least Sandpiper	—	—	—	—	—	—	—	—	—	—	—	—	—	—	—	—	—	—	—	—
Peep sp.	—	—	—	—	—	—	—	—	—	—	—	—	—	—	—	—	—	—	—	—
Dunlin	—	—	—	—	—	—	—	—	—	—	—	—	—	—	—	—	—	—	—	—
Herring Gull	1	60	—	—	2	—	—	5	—	14	—	9	1	3	—	—	—	—	—	—
Ring-billed Gull	250	30	50	—	48	—	—	981	—	17	—	162	114	641	—	—	1	—	—	—
Bonaparte's Gull	—	20	—	—	2	—	—	52	—	2	—	4	—	—	—	—	—	—	57	—
Gull sp.	—	—	—	—	—	—	—	—	—	—	—	—	—	—	—	—	—	—	—	—
Rock Dove	1	52	174	19	62	76	86	261	—	83	29	997	40	115	20	7	250	128	9	—
Mourning Dove	170	555	247	36	116	94	324	187	39	101	94	571	181	348	111	106	120	278	520	—
Barn Owl	—	1	2	4	3	7	11	3	—	—	—	3	—	—	—	—	—	—	—	—
Screech Owl	—	1	—	—	—	6	8	2	—	—	—	5	5	31	1	3	—	1	3	—
Great Horned Owl	1	1	—	—	—	3	3	—	—	—	—	—	—	—	—	—	—	—	—	—
Barn Owl	1	15	—	2	4	3	3	—	—	—	—	—	—	—	—	—	—	—	—	—
Short-eared Owl	—	—	—	—	—	—	—	—	—	—	—	—	—	—	—	—	—	—	—	—
Belted Kingfisher	14	2	8	15	25	16	25	142	9	6	1	23	20	36	7	4	9	12	6	1
Common Kingfisher	174	99	41	17	45	11	42	26	12	4	14	39	31	54	11	5	2	42	13	1
Pileated Woodpecker	18	35	18	8	29	17	18	16	—	2	5	11	15	16	8	9	—	12	6	1
Red-bell. Woodpecker	106	101	66	22	63	36	85	27	10	7	15	25	17	35	8	13	1	7	6	—
Red-bd. Woodpecker	8	50	10	16	17	7	5	—	—	—	—	18	—	—	—	—	—	—	—	—
Vel.-bel. Sapsucker	38	16	8	7	14	8	18	12	4	1	3	20	8	19	4	2	1	11	2	1
Hairy Woodpecker	15	17	14	4	3	13	18	8	1	2	1	3	4	5	6	2	1	2	18	9
Dowry Woodpecker	78	71	61	18	60	39	123	46	8	6	12	34	22	49	28	18	6	26	3	—
Eastern Phoebe	—	2	1	2	3	—	—	—	—	—	1	1	3	2	5	—	—	—	—	1
Horned Lark	304	101	487	135	106	76	274	139	97	131	77	162	316	317	95	135	45	309	133	19
Blue Jay	292	89	—	86	—	—	—	—	—	—	—	—	—	—	—	—	—	—	—	—
Common Raven	154	127	241	147	696	105	158	258	184	600	98	461	531	544	328	110	1.2M	436	360	56
Common Crow	199	217	178	75	175	138	388	153	56	29	25	100	95	215	140	66	22	123	73	40
Savannah Chickadee	—	—	—	—	—	—	—	—	—	—	—	—	—	—	—	—	—	—	—	—

MURFREESBORO — 19 Dec.; temp. 12 to 20° F; 9 observers, 8 in 3 parties plus 1 at feeders; 137 party miles.

Lou Erwin, Anne Hettish (compiler — 1018 Lawndale Dr., Murfreesboro 37130), Edith Haynes, Larry McFarlin, Gene Odom, Ruth Odom, John Patten, Wilma Hunter, Francis Vaughan.

Wentp	Reel	Clar	Lawr	Ashl	Colu	Nash	Hick	Murf	High	Cook	Chat	Hlwa	Knox	GMM	Gre	King	Elliz	Bris	Rean
Tufted Titmouse	76	57	173	74	139	90	203	75	27	15	35	73	55	64	48	25	57	31	25
White-br. Nuthatch	2	15	22	21	26	1	50	1	9	8	30	5	11	9	8	2	16	16	6
Red-br. Nuthatch	20	5	6	18	21	1	11	5	—	1	20	12	3	20	2	—	14	17	128
Brown-hd. Nuthatch	—	—	—	—	—	—	—	—	—	—	—	—	—	—	—	—	—	—	—
Brown Creeper	18	3	5	9	6	3	22	14	2	—	2	5	—	6	8	3	—	4	4
House Wren	—	—	—	—	—	—	—	—	—	—	—	—	—	—	—	—	—	—	—
Winter Wren	7	4	1	9	4	1	11	—	—	4	3	7	5	3	1	—	—	3	1
Bewick's Wren	—	—	—	—	—	—	—	—	—	—	—	—	—	—	—	—	—	—	—
Carolina Wren	101	40	43	10	34	42	73	77	10	13	78	43	61	25	19	14	58	15	4
Short-b. Marsh Wren	—	—	—	—	—	—	—	—	—	—	—	1*	—	—	—	—	—	—	2
Mockingbird	144	36	62	32	107	20	103	88	167	40	11	71	17	118	12	30	10	51	41
Gray Catbird	1	1	—	—	—	—	—	—	—	—	1	—	—	—	—	—	—	—	—
Brown Towhee	26	11	2	10	8	1	3	3	4	9	3	19	8	8	—	—	—	1	—
American Robin	2,5M	74	354	239	224	59	479	537	76	50	20	10,2M	21	314	155	7	30	107	289
Hermit Thrush	22	43	4	2	2	6	1	3	—	5	5	5	3	3	—	—	1	1	—
Eastern Bluebird	8	2	46	74	43	23	71	3	60*	—	24	4	89	63	46	10	13	93	30
Blue-gray Gnatcatcher	—	—	—	—	—	—	—	—	—	—	1*	—	—	—	—	—	—	—	—
Golden-cr. Kinglet	14	5	5	18	28	4	7	35	1	—	2	16	97	56	116	3	—	32	15
Ruby-cr. Kinglet	53	30	4	—	12	6	14	20	—	—	—	20	42	14	5	2	—	1	3
Water Pipit	—	—	—	—	—	—	—	—	—	—	3	115	—	—	—	—	—	—	—
Cedar Waxwing	327	153	425	113	147	216	26	25	2	—	57	200	260	716	290	185	—	1M	125
Loggerhead Shrike	10	14	10	10	17	10	25	6	3	4	1	3	—	3	1	—	—	2	4
Scarling	360M	5,5M	740	1,4M	100M	441	10,8M	2,4M	190	700	900	14,7M	172	32,6M	617	1,5M	2X	11,12M	2M
Yellow-rp. Warbler	282	247	76	3	134	11	35	79	42	1	38	129	117	358	23	43	35	81	66
Pine Warbler	2	—	—	—	—	—	—	—	—	—	10	2	—	—	—	—	—	—	—
Palm Warbler	—	—	—	—	—	1	1	12	—	—	—	—	—	—	—	—	—	—	—
Common Yellowthroat	—	—	—	—	—	—	—	—	—	—	—	—	—	—	—	—	—	—	—
House Sparrow	716	919	410	223	99	105	133	141	1,2M	191	540	137	19	123	29	53	46	142	33
Eastern Meadowlark	326	87	106	108	283	42	119	74	119	144	39	107	70	91	38	69	12	60	57
Red-wg. Blackbird	202M	146	193	127	200M	222	633	528	7	50	4	685	503	449	28	48	2,7X	—	—
Rusty Blackbird	82	1	—	—	52	25	19	3	—	1	6	—	—	5	130	—	40	—	—
Common Grackle	402M	362	152	689	301M	737	2M	27	360	300	100	1,8M	50	1M	1	8	1,5X	175	49
Brown-hd. Cowbird	50M	59	5	15	132	55	34	65	1	2	10	103	4	5	—	5	10M	15	—
Cardinal	410	163	303	96	365	192	532	330	146	46	38	125	94	268	28	61	45	216	59
Evening Grosbeak	—	—	—	—	—	—	—	—	—	—	—	—	—	—	—	—	—	1	5
House Finch	—	1	—	—	—	1	6	5	—	—	35	3	—	127	1	76	14	9	43
Purple Finch	7	1	49	42	24	5	24	20	14	30	60	65	92	79	81	34	3	51	26
Pine Siskin	8	2	—	—	—	—	—	—	—	—	3	14	1	625	—	—	—	—	—
American Goldfinch	101	358	171	186	158	157	188	81	208	29	67	130	182	230	101	12	50	336	89
Red Crossbill	—	—	—	—	—	—	—	—	—	—	2*	—	—	—	—	—	—	—	—
Rufous-sd. Towhee	49	5	106	68	79	36	106	65	17	17	38	65	36	99	13	4	5	14	13
Savannah Sparrow	97	56	1	16	32	2	8	7	1	—	22	20	34	—	—	—	—	10	—
Grasshopper Sparrow	—	—	—	—	—	—	—	—	—	—	1*	—	—	—	—	—	—	—	—
LeConte's Sparrow	—	—	—	—	—	—	—	—	—	—	—	—	—	—	—	—	—	—	—
Vesper Sparrow	—	—	—	—	—	—	—	—	—	—	—	—	—	—	—	—	—	—	—

Compiler commented on the high Eastern Bluebird number.

HIGHLAND RIM — 19 Dec.; temp. 13-28° F; 16 observers in 7 parties; 20.5 party hours; 201.5 party miles (1.5 on foot, 199 by car).

Carroll Barr, Stanley Barr, Dean Butler, Laura Butler, Marjory Harper, Betty King, Glenn King, Ruth Luckado, Niki Medley, Phil Medley, Erma Rogers (compiler — Route #1, Hillsboro 37342), Lillie Willard, Evelyn Wilson, Wanda Winnett, Lee Wood, Robert Wood.

COOKEVILLE — 26 Dec.; 40° F; 7 observers.

Kathryn Coward, Sam Coward (compiler — Box 49465, Algood 38501), Amy Johnson, Mildred Lassiter, Carrol Warren, Richard Simmers, Chrissa Wendt.

HIWASSEE — 1 Jan.; 0615 to 1915; temp. 40 to 55° F; wind, calm; 10 observers in 6 parties; 60 party hours (35 on foot, 22 by car, 3 by boat); 344 party miles (21½ on foot, 317½ by car, 5 by boat).

Angela Davis, Ken Dubke, Lil Dubke, Billy Johnson, Starr Klein, Tony Koella, Dave Matthewson, Chuck Nicholson, Johnny Parks, Boyd Sharp, Randy Stringer (compiler — 554 McCallie Ave., Chattanooga 37402).

One of the Bald Eagles was an adult. Details submitted on all unusual species.

CHATTANOOGA — 19 Dec.; 0300 to 1830; temp. 12 to 31° F; wind, NE, 5-10 mph; 26 observers, 22 in 6 parties plus 4 at feeders; 72½ party hours (51½ on foot, 21 by car); 597 party miles (38 on foot, 559 by car).

Carl Adams, Judy Boyles, Katherine Boyles, Edith Bromley, Kathy Davidson, Ken Dubke, Lil Dubke, Chris Haney, Daniel Jacobson, Al Jenkins, Billy Johnson, Starr Klein, Barbara McMahan, Mike McMahan, Dave Matthewson, Johnny Parks, Kent Pennington, Peter Robinson, Joe Stone, Randy Stringer (compiler — 758 Emory Dr., Chattanooga 37415), Dale Taylor, Bruce Wilkey.

Good details submitted on unusual species. Seen count week: Turkey, Palm Warbler.

KNOXVILLE — 20 Dec.; 0530 to 1715; temp. 10 to 34° F; wind, calm; 29 observers in 12 parties; 95 party hours (47 on foot, 48 by car); 452 party miles (38 on foot, 414 by car).

	Merp	Bee1	Clar	Iner	Ashl	Colu	Math	Hick	Murf	High	Cook	Chat	Hawa	Knox	OSON	Greec	King	Elliz	Bris	Roan
Dark-eyed Junco	470	263	164	270	592	12	346	203	60	35	16	163	51	59	134	6	—	368	57	73
Tree Sparrow	—	—	2	—	—	—	—	—	—	—	—	—	—	—	—	—	—	—	—	—
Chipping Sparrow	—	—	—	—	—	—	—	—	—	—	—	—	—	—	—	—	—	—	—	—
Field Sparrow	115	34	150	138	617	3	174	117	10	54	79	134	134	203	77	65	139	32	10	10
White-cr. Sparrow	43	1	9	20	7	33	35	14	51	1	—	10	3	31	—	16	2	8	23	—
White-thr. Sparrow	926	448	244	160	395	82	419	216	49	18	98	358	220	539	176	101	60	425	100	32
Robin	—	—	1	—	—	—	—	—	—	—	—	—	—	—	—	—	—	—	—	—
Fox Sparrow	41	53	4	8	23	5	9	4	3	—	3	5	—	1	—	—	—	—	—	2
Swamp Sparrow	103	252	26	20	406	28	143	47	—	—	4	54	70	22	17	—	—	—	—	2
Song Sparrow	275	135	82	91	473	58	205	141	3	23	16	334	167	432	80	78	65	206	88	39
Total Species	84	92	71	72	87	87	80	87	54	59	59	103	85	82	62	67	59	71	71	40
Grand Total	M = 1,000 X = 1,000,000																			

*See Information on Counts

Frank Bills, Sharon Bostick, John Burkhart, Dean Chaney, Marcia Davis, Barbara Finney, Ron Foresta, Margie Funk, Chris Hamilton, Paul Hartigan, David Highbaugh, Audrey Hoff, Ron Hoff, Fred Houser, J. C. Howell, Tony Koella, Gregg Lagerberg, Ken McClean, Sally Mirick, Charles Nicholson, Holly Overton, J. B. Owen, Paul Pardue, Mabel Sanders, Boyd Sharp, James Tanner (compiler — Rt. 28, Box 155, Knoxville 37920), Mary Trice, Linda Turner.

Seen count week: Barred Owl, Pine Warbler.

GREAT SMOKY MOUNTAINS NATIONAL PARK — 3 Jan.; 0530 to 1715; overcast, moderate to heavy rain throughout day; temp. 29 to 66° F; wind, variable, gusts to 30 mph; up to 10 in. snow cover, high elevations; 24 observers in 15 parties; 94.5 party hours (60 on foot, 34.5 by car); 346 party miles (82 on foot; 264 by car).

Alya Dean Brown, Winnifred Brown, Jim and Betty Reid Campbell, Howard Chitwood, Marcia Davis, Don DeFoe (compiler — Great Smoky Mountains National Park, Gatlinburg 37738), Katherine Foster, Jim and Brenda Graves, David Highbaugh, Joe Howell, Tony Koella, Alison and Bill McNutt, Chuck Nicholson, Holly Overton, J. B. Owen, Paul Pardue, Boyd Sharp, Johneta and Louis Smith, Jim Tanner, Linda Turner.

GREENEVILLE — 30 Dec.; 0700 to 1730; temp. 20 to 40° F; wind, light; 19 observers; 25½ party hours (18 on foot, 2 by car, 5½ by canoe); 43 party miles (6 on foot, 37 by car, 2 by canoe).

KINGSPORT — 2 Jan.; 8 observers.

Didi Eiklor, John Eiklor, Fred Alsop, Lois Alsop, Tom Finucane, E. E. Scott, Arthur Smith, Ann Switzer.

ELIZABETHTON (Lee R. Herndon Chapter) — 26 Dec.; 0645 to 1700; temp. 29 to 45° F; 14 observers; 48 party hours (18½ on foot, 29½ by car); 277 party miles (13 on foot, 264 by car).

Martha Dillenbeck, Helenhill Dove, Glenn Eller — compiler — Rt. 3, Grandview Terrace, Elizabethton 37643), Sally Goodin, Dick Hegler, Ralph Keffer, Rick Knight, Joy Kyle, Richard Lewis, Dick Lura, Alan Smith, Glenn Swafford, Jane Whitehead.

Details submitted on the unusual species.

BRISTOL — 27 Dec.; temp. 31 to 48° F; 9 observers.

Carolyn Coffey, Janet Coffey, Wallace Coffey, Bert Hale, Ken Hale, Loraine Hale, Richard Lewis (compiler — Rt. 3, Box 470, Bristol 37620), Robin Rasor, John Wright.

ROAN MOUNTAIN — 30 Dec.; 0645 to 1545; temp. 6 to 42° F; 6 observers.

Bill Bridgeforth, Helenhill Dove, Glenn Eller (compiler — Rt. 3, Grandview Terrace, Elizabethton 37643), Harry Farthing, Sally Goodin, Rick Knight.

MAGAZINE REVIEW

THE LIVING BIRD QUARTERLY — Published by the Laboratory of Ornithology, Cornell University, P. O. Box 223, Etna, NY 13062. Volume 1, No. 1 of this new magazine was mailed in July 1982. It is a descendent of *The Living Bird*, the Lab's former annual bulletin. When the annual *Living Bird* was first published in 1962, its goal was to present varied articles on bird life, understandable to amateur ornithologists and birdwatchers, as well as professionals. The quarterly pledges to carry on this tradition. As with the annual, the quarterly is illustrated with original drawings and paintings, and also includes color and black-and-white photography, printed on glossy paper.

At present, *The Living Bird Quarterly* is publishing invited articles. The first issue, 24 pages in length, features an article on reproductive success in songbirds by Raymond J. O'Conner, director of the British Trust for Ornithology, and articles on the International Crane Foundation and the Atlantic Puffin reintroduction program at Eastern Egg Rock, Maine. There is also a charming painting of a fledgling cuckoo by George Miksch Sutton. In its present format, the quarterly will not be able to publish the long, copiously illustrated articles which previously appeared in the annual. The Lab intends to publish *The Living Bird* occasionally as a supplement, and thus, I hope, continue to provide a niche for the longer articles.

Subscription to *The Living Bird Quarterly* is included with membership in the Laboratory of Ornithology. I wish the Lab luck with this new endeavor. It should further the Lab's goal of involving amateurs in bird study, and is just one of several benefits of Lab membership. I also hope that the quarterly is not host to the production delays which continually plagued the former annual.

CHARLES P. NICHOLSON



ROUND TABLE NOTES

FISH CROWS OVER SAVANNAH BAY, HAMILTON COUNTY, TENNESSEE — At 1015, 10 April 1979, I was outside our house on Savannah Bay, Chickamauga Lake, when my attention was directed to four calling Fish Crows (*Corvus ossifragus*) leisurely flying very low overhead. Immediately I ran into the house and alerted my wife Lil to rush outside and listen for a strange bird. Without hesitation, she blurted out "Fish Crows." The birds flew slowly from the south to the north over the bay. There were no further observations of the birds.

In a later conversation with Lil, Chris Haney who lives about 10 km south of us, commented he had a similar experience a few minutes earlier on the same day. These were probably the same birds.

This is the first local record for the species, and to my knowledge, the first East Tennessee record for the species. The southeastern section of the country had recently experienced weather disturbances, and this is probably the reason the crows were temporarily relocated from their usual coastal plain haunts.

The above comments are further details on the observation reported in *The Migrant* 50(3):71-1979.

KENNETH H. DUBKE, 8139 Roy Lane, Ooltewah TN 37363. Accepted 2 November 1981.

SEED-CRACKING ATTEMPTS BY A CAROLINA WREN — On 5 February 1980 at about 1330, I observed a Carolina Wren (*Thryothorus ludovicianus*) attempt several times to crack sunflower seeds at my residence at 4680 Camp Road, Collegedale, Hamilton County, Tennessee. After arching its head up, the bird quickly brought the bill down on the seeds at a near vertical angle. The wren only struck those seeds lying in 12 mm-wide cracks formed by adjacent bricks on a concrete and brick patio. If the seed moved out of the crack as a result of a glancing blow, the wren retrieved it or another seed and deliberately wedged the seed in a crack for another try. After at least ten apparently unsuccessful attempts, the wren gave up and continued foraging in a more usual fashion. I do not know how long the wren had been feeding in this way or if attempts prior to my observations were successful.

The Carolina Wren has a long decurved and compressed bill, ill-equipped for cracking hulls of large seeds. Bent (Life Histories of North American Nuthatches, Wrens, Thrashers, and Their Allies. U.S. Natl. Mus. Bull. 195, 1948) states that animal matter, mostly insects make up 94% of the diet. The remaining 6% is made up of small fruits or seeds that can usually be swallowed whole.

Jays and other corvids, titmice, and nuthatches regularly use their feet or crevices in bark and rocks to restrain seeds while they split them open with blows of the bill. These species, however, have morphologically generalized bills as opposed to the Carolina Wren's more specialized one. Whether this compensatory feeding mechanism is common among wrens and whether it is an innate or learned response is not known. If it is an adaptive response or a solution to permit access to previously unavailable resources (food), it may represent a form of insight learning. Insight learning is difficult to ascertain in wild birds and I would be interested to hear of other, similar instances in feeder-attending Carolina Wrens.

J. CHRISTOPHER HANEY, Department of Zoology, University of Georgia, Athens, Georgia 30602. Accepted 2 June 1982.

NEST BOX UTILIZATION BY HOODED MERGANSERS AT HATCHIE NATIONAL WILDLIFE REFUGE — The breeding population of Hooded Mergansers (*Lophodytes cucullatus*) in the United States has been estimated at 76,000 (Bellrose, Ducks, Geese and Swans of North America, Stackpole Books, Harrisburg, PA, 1976). Relatively little is known about population changes of Hooded Mergansers, although most observers believe the species has declined in numbers, partially, at least, due to destruction of river bottom woodlands (*ibid.*). Possibly the largest concentration of nesting Hooded Mergansers in Tennessee occurs at the Hatchie National Wildlife Refuge in Haywood and Lauderdale Counties.

Between 1967 and 1972, intensive nest box surveys were conducted. These surveys showed an increase in the number of Hooded Merganser nests from 0 in 1967 to 113 in 1972 (Table 1). Intensive nest box surveys have not been conducted in most years since 1972. However, inspections in 1977, 1978, 1980 and 1981 indicate that at least 20% of the approximately 400 nest boxes were used by Hooded Mergansers each year.

TABLE 1. Results of intensive nest box surveys 1967-72 at Hatchie NWR

Year	No. Boxes Available	Nest Starts		Successful Nests		Ducklings Produced	
		WD ^a	HM ^b	WD	HM	WD	HM
1967	58	37	0	35	0	358	0
1968	125	64	13	53	13	634	145
1969	161	98	41	80	20	1032	244
1970	207	85	88	72	61	872	737
1971	227	130	77	111	50	1414	836
1972	298	164	113	128	87	1647	1059

a. WD = Wood Duck

b. HM = Hooded Merganser

Eggs from Hatchie NWR were used to start the resident flock of Hooded Mergansers at the Patuxent Wildlife Research Center in Laurel, Maryland. The success of the Hatchie NWR nest box program is a positive reflection on the management practices being conducted there. Thanks go to Dean Rundle, Assistant Refuge Manager at Hatchie NWR, for providing the data used in this note.

MARTHA G. WALDRON, 1626 Yorkshire Dr., Memphis, TN 38119. Accepted 15 July 1982.

THE SEASON



FALL MIGRATION: 1 AUGUST - 30 NOVEMBER 1981

If the length of the reports here is any indication, this was an interesting season. Weather was mild through most of the period, and the wild food crop was very good. There was no mention of strong cold fronts and attendant waves of migrating birds. Many birds arrived earlier than normal and others lingered beyond normal departure times.

Among the outstanding observations was a Black-legged Kittiwake which landed on the playing field during a Tennessee Tech University football game at Cookeville. At least two Swallow-tailed Kites were reported near Pikeville. This is the easternmost occurrence of this species in Tennessee. Also reported from the Eastern Ridge and Valley Region was a Caribbean Coot. Although the origin and the taxonomy of the coot are debatable, this record, if accepted, will be the first state occurrence and one of the northernmost observations of the species.

Other Rallidae made a good showing. In addition to the usual rail reports, both Common and Purple Gallinules were observed near Chattanooga. Tennessee's first fall Hudsonian Godwit was observed near Charleston in September, a Goshawk was reported at Roan Mountain in August, and Rough-legged Hawks were found at Memphis in October. All three species of scoters occurred at Nashville. Red-breasted Nuthatches were reported from across the state by mid-September, and significant movements of vireos and warblers were observed in August.

"b" denotes a banded bird.

WESTERN COASTAL PLAIN REGION — Climatic conditions were not a significant factor during the period of this report. Fall migration records include a Red Knot at Pace Point, 2,000 Common Nighthawks near Camden, an increase in the number of Sharp-shinned Hawks observed in Shelby County, and the migration of Broad-winged Hawks in Bells. Also included are notable observations from the fall TOS meeting at Paris Landing State Park, 13-15 November.

Grebe-Eagle: Horned Grebe: 13-14 Nov (12-10) PLP (TOS). Double-crested Cormorant: 14 Nov (3) PLP (TOS); 14-15 Nov (4) PAP (TOS). Great Blue Heron: 14 Nov (60) BSU (TOS). Canada Goose: 15 Nov (3000) BRF (TOS). Snow Goose: 15 Nov (50) BRF (TOS). Snow Goose (blue morph): 15 Nov (20) BRF (TOS). Black Duck: 15 Nov (50) BRF (TOS). American Wigeon: 15 Nov (100) BRF (TOS). Hooded Merganser: 14 Nov (22) BSU (TOS). Red-breasted Merganser: 14 Nov (60) PAP (TOS). Sharp-shinned Hawk: 1 Oct (1) OVP (JLS); 10 Oct (1) RAL (DAV); 19 Oct (1) BP (JRW); 16 Nov (1) MEM (DAV). Cooper's

Hawk: 10 Nov (1) MEM (DAV). Broad-winged Hawk: 24 Sep (310 and 200 in two groups, at about 1000 hrs) BEL (DM, GM). Rough-legged Hawk: 21 Oct (1) PRI (HBD, SCF, SSL); 25 Oct (1) PEF (JRW). Bald Eagle: 13 Nov - 2 Dec (1 ad, 1 imm) OPL (DAW).

Knot-Crossbill: 29 Aug (1), 30 Aug (1) PAP (MPS). Sanderling: 29 Aug (6) PAP (MTOS); 7 Sep (14) PSP (WJB). Western Sandpiper: 30 Aug (1) PAP (MPS). Least Sandpiper: 16 Nov (450) ENB (BBC, LCC, WLW). Bonaparte's Gull: 29 Aug (1) PAP (MTOS); 30 Aug (1) PAP (MPS). Forster's Tern: 29 Aug (8) PAP (MTOS). Common Tern: 29 Aug (19) PAP (MTOS). Black Tern: 29 Aug (30) PAP (MTOS). Common Nighthawk: 29 Aug (2000) between PAP and Camden (JAF, SCF). Red-headed Woodpecker: 25 Oct (107) SHF (MTOS). Purple Martin: 29 Aug (200) BIS (DAD, MGW). Red-breasted Nuthatch: 16 Sep (1) RAL (SCF); 16 Sep (1) MEM (MGW); 12 Oct (1) COV (HAS); 25 Oct (1) SHF (MTOS); 21 Nov (1) PNF (CHB, MGW). House Wren: 10 Oct (2) KEP (JAF, MTOS); 25 Oct (1) SHF (MTOS); 1 Nov (1) MEM (WBF); 22 Nov (2) FPP (JRW). Robin: 14 Oct (2500 in roost), 12 Nov (1000 in roost) MEM (WRP). House Finch: 27 Oct (1) MEM (CAW). Red Crossbill: 15 Nov (11) PLP (TOS).

Locations: BEL — Bells, Crockett Co.; BIS — Big Sandy; BP — Bartlett Park, Shelby Co.; BRP — Britton Ford; BSU — Big Sandy Unit, Tennessee Nat. Wildl. Ref.; COV — Covington; ENB — Ensley Bottoms, Memphis; FPP — Fort Pillow State Park, Lauderdale Co.; KEP — Kennedy Park, Shelby Co.; MEM — Memphis; OPL — Open Lake; OVP — Overton Park, Memphis; PEF — Shelby Co. Penal Farm; PRI — President's Island, Shelby Co.; PAP — Pace Point; PLP — Paris Landing State Park; RAL — Raleigh; SHF — Shelby Forest State Park.

MARTHA G. WALDRON, 1626 Yorkshire Dr., Memphis 38117.

CENTRAL PLATEAU AND BASIN REGION — Fall migration in the Nashville area was good. This was at least partially due to periods of overcast conditions and a warm fall into November. One did not have to look hard to locate a flock of warblers of up to six species and 20 individuals feeding in one tree or a small group of trees. The most predominate warbler species in October were Tennessee, Black-throated Green, and Bay-breasted. Richard Simmers considered the peak migration dates for warblers, grosbeaks, and thrushes at his farm near Cookeville to be 20, 25, 28, 29, 30 Sept and 4 Oct, and for Myrtle Warbler 20, 26 Oct and 1 Nov.

Loon-Hawk: Common Loon: 7 Nov (6) Old Hickory L (MLB), max for period Nash area; 21 Nov (20) Woods Res (KHD, LHD, RCS). Horned Grebe: 7 Nov (40) Old Hickory L (MLB), max for period Nash area. Double-crested Cormorant: 8 Nov (4) Old Hickory L (MLB); 14 Nov (2) Cross Creeks NWR (TOS). Great Egret: 7 Aug (7) Gallatin (MPS), nice number; 25 Oct (3) dam, Cheatham L (MLB). Green-winged Teal: 3 Oct (43) Gallatin (DTC, JPC, DRJ), nice number. Northern Shoveler: 8 Aug (1) Nash (DFV), earliest Nash eighteen days. Wood Duck: 15, 16 Oct (52) Radnor L, Nash (MLB), max this fall on lake. Canvasback: 28 Oct (3) Franklin Res, WMC (CHS), early. Bufflehead: 20 Oct (1) Radnor L (MLB), earliest Nash two days. White-winged Scoter: 29 Oct (1 female type) Radnor L (MLB), limited records Nash. Surf Scoter: 12 Oct - end of period (1 imm male) Radnor L (MLB); 19-22 Nov (1 female type) Franklin Res (CHS), limited records Nash area. *BLACK SCOTER*: 18 Nov (2 female types) Radnor L (MLB),

sixth record Tenn, second Nash. At no time has Nash ever recorded two species of scoters on the same day much less two species on the same body of water and all three species in the same period. Ruddy Duck: 20 Oct (1) Radnor L (MLB), early. Hooded Merganser: 7 Nov (2) Old Hickory L (MLB); 18 Nov (6) Hillsboro (ER); 21 Nov (200) Woods Res (KHD, LHD, RCS), large number; 21 Nov (23) Franklin Res (CHS); seemed to be more reports this fall. Turkey Vulture: 10, 11 Nov (70) Bucksnot, HIC, I-40, mi 154 (DAD). Sharp-shinned Hawk: 4 Oct and 11 Oct (1) Cook (RMS); 10 Oct - 7 Nov (1 each at three locations) Nash area (NTOS); 9 Nov (1) Cross Creeks NWR (AHH, EJW). Cooper's Hawk: 15 Nov (1) Cross Creeks NWR (TOS); 18 Nov (1) Hillsboro (ER). Red-shouldered Hawk: 24 Oct (6) Cheatham L (MLB), best area for species Nash area; 15 Nov (1) Sewanee area (HCY), had caught female Bobwhite. Bald Eagle: 14 Nov (1 ad, 1 imm) Cross Creeks NWR (TOS); 21 Nov (2 ad) Woods Res (KHD, LHD, RCS); 23 Nov (1 ad) Cross Creeks NWF (DWB). Marsh Hawk: 3 Oct (1) Gallatin (DTC, JPC, DRJ), first for season; 15 Nov (2) Cross Creeks NWR (TOS).

Rail-Vireo: Sora: 4 Sep and 4 Oct (1) Metro Center, Nash (DFV); 12 Oct (1 found dead) Nash (KAG). *PIPING PLOVER*: 5 Sep (1) Gallatin Steam Plant (LFK), about ninth record Nash area. American Golden Plover: 5 Sep (1) Gallatin Steam Plant (LFK), occasional fall Nash area. American Woodcock: 2 Nov (1 calling before dawn) Cook (RWS). Greater Yellowlegs: 13, 14 Nov (1) Cross Creeks NWR (TOS). Lesser Yellowlegs: 13 Nov (1) Cross Creeks NWR (KHD, LHD), getting late. Stilt Sandpiper: 3 Sep (1) Gallatin Steam Plant (DTC, JPC, MPS). Sanderling: 6 Aug (1) beach, Old Hickory L (MPS), early. *BLACK-LEGGED KITTIWAKE*: 10 Oct (1 imm, photo) Cook (LBD), third Tennessee record. Forster's Tern: 20 Aug (2) Metro Center (DFV); 3 Sep (2) Gallatin Steam Plant (DTC, JPC). Caspian Tern: 9 Sep (3) New Johnsonville (JDF). Yellow-billed Cuckoo: 8 Nov (1) Old Hickory L, SUC (MLB), getting late. Common Nighthawk: Late Aug into early Sep (200) Green Hills, Nash (NTOS); 29 Aug (400) Belle Meade, Nash (KAG, DFV). *WESTERN KINGBIRD*: 3 Sep (1) Metro Center (DFV), fourth Nash record. *SCISSOR-TAILED FLYCATCHER*: last seen 21 Sep (1) Murfreesboro (ALH), species present every summer since 1978. Yellow-bellied Flycatcher: 23 Sep (1 b) Nash (KAG), only verified individual for fall, usually more. Olive-sided Flycatcher: 25 Aug 1979 (2) Fort Campbell, MTC (MLB, TNH); 29 Aug (1) Radnor L (EMQ, JLB). Tree Swallow: 24 Oct (4) Gallatin (DTC, JPC), getting late. Red-breasted Nuthatch: 9 Sep (1) Radnor L (JWB); 29 Sep (2) Cook (RWS); 7 Nov (12) Craggie Hope, CHC (NTOS); invasion underway. Winter Wren: 24 Sep (1) Cook (RWS). Bewick's Wren: pair nested twice home RUC (RVM) and pair nested twice home Lebanon (EB), once in bluebird box. Long-billed Marsh Wren: 11 Oct (1) Metro Center (MLB). Short-billed Marsh Wren: 3 Oct (1) Radnor L (FJM); 10 Oct (1) Cook (RWS); 11 Oct (1) Metro Center (MLB); 25 Oct (2) Pardue's Pond, CHC (MLB). Water Pipit: 3 Oct (9) Gallatin (DTC, JPC, DRJ); 31 Oct (25) near Ashland City Marsh, CHC (MLB); 9 Nov (6) Cross Creeks NWR (AHH, EJW); 13 Nov (75) and 15 Nov (250) Cross Creeks NWR (TOS); was reported more than usual and in good numbers. Cedar Waxwing: 16 Aug (1) Nash (JCM), earliest Nash by two days; 1 Nov (30) and 29 Nov (80) Cook (RWS). Solitary Vireo: 3-9 Oct (1 each at three locations) Nash (FJM, MPS, JCA); 4 Oct (1) and 29 Oct (1) Cook (RWS).

Warbler-Sparrow: An August date for the following warblers represents the first fall sighting. These nine transient species of warblers show how significant the

fall migration is in some passerines *before* the first of September. Tennessee Warbler: 22 Aug (1) Nash (JCM); 27 Aug (1) Clarksville (AHH); 6 Nov (1) Nash (MLB, AN), last for fall. Orange-crowned Warbler: 19 Oct (1) Radnor L (MLB); 24 Oct (1 found dead) and 27 Oct (1 found dead) Nash (KAG); 6 Nov (1) Nash (MLB). Magnolia Warbler: 25 Aug (1) Nash (JCA). Black-throated Blue Warbler: 9 Sep (1 male) Nash (MLM), ten days earliest fall Nash; 4 Oct (1 male) Cook (RWS). Black-throated Green Warbler: 23 Aug (1) Nash (JCA). Blackburnian Warbler: 23 Aug (1) Nash (JCA). Chestnut-sided Warbler: 22 Aug (1) Nash (JCM). Bay-breasted Warbler: 23 Aug (1) Nash (JCM). Palm Warbler: 21 Oct (1) Cook (RWS); 9 Nov (1) and 17 Nov (2) Hillsboro (ER). Northern Waterthrush: 29 Aug (1 b) Basin Spring (KAG). Mourning Warbler: 5 Sep (1 b) and 28 Sep (1 b) Basin Spring, WMC (KAG). Yellow-breasted Chat: 15 Nov (1 b) Nash (HAR, JNR), latest Nash by eleven days. Wilson's Warbler: 22 Aug (1) Nash (MLM). Canada Warbler: 20 Aug (2) Nash (MLM). Rose-breasted Grosbeak: 11 Nov (1 male) Radnor L (HWS, LKD, LPW), latest fall Nash by five days. Evening Grosbeak: 3 Oct (1) and 5 Oct (1) different locations Nash (MLJ, MLM), first for fall: 8 Nov (1) Cook (RWS); 27 Nov (1) West Meade, Nash (CKS); these sightings probably denote an "echo" flight from the light invasion of winter 1980-81. Purple Finch: 28 Oct (1), first for fall, then max 29 Nov (20) Cook (RJS); few Nash area (NTOS). House Finch: 9 Nov (1) Gallatin (DTC, JPC), first for fall Nash area; small numbers scattered by end of period in Nashville, Gallatin, Lebanon, and Murfreesboro. Pine Siskin: 24 Oct (3) DIC (MLB) and (10) Cook (RWS); 30 Oct (30) Cedar Hill, RBC (DBD); these were first of season, invasion underway. COMMON REDPOLL: 10 Nov (1) Clarksville (JH, AHH), is at least ninth Tenn record, earliest and furthest west in the state of all records. RED CROSSBILL: 8 Aug (1 male singing) Nash (RJF); 12 Sep (1 female in bird bath) Franklin, WMC (BJC); unprecedented for time of year locally, ninth and tenth records Nash area. Grasshopper Sparrow: 8 Aug (2) RUC (MRM, RVM), one was singing. Vesper Sparrow: 15 Nov (1) Cross Creeks NWR (TOS); 18 Nov (1) Hillsboro (ER). White-throated Sparrow: 18 Sep (1) Smyrna, RUC (MLM), near early date. Lincoln's Sparrow: 26 Oct (1) Cook (RWS); 4 Nov (1) Palmyra, MTC (DNS). Song Sparrow: 2 Aug (1) LaVergne, RUC (MPS), another new summer location.

Locations: CHC — Cheatham Co.; DIC — Dickson Co.; HIC — Hickman Co.; MTC — Montgomery Co.; RBC — Robertson Co.; RUC — Rutherford Co.; SUC — Sumner Co.; WMC — Williamson Co.

MICHAEL LEE BIERLY, 3825 Bedford Avenue, Nashville 37215.

EASTERN RIDGE AND VALLEY REGION — A number of active field workers surveying several important habitats reported a large amount of meaningful information this period.

High numbers of Great Blue Herons were recorded at both Douglas Lake and the Hiwassee River Area. Each fall since 1977 immature White Ibis have been appearing in the region. This season only one was identified. TWRA officer Tommy Stanfill reported as many as two Swallow-tailed Kites present for at least a week in Sequatchie Valley. Were they local nesters or late summer wanderers?

The very close monitoring of the Kingston Steam Plant once again yielded the now-to-be expected variety of species. The first Tennessee fall record of the Hudsonian Godwit was reported from along the Hiwassee River. The sharp-eyed

Randy Stringer picked out a Purple Gallinule and a Common Gallinule from the many thousands of American Coot feeding in the abundant aquatic vegetation in Chickamauga Lake.

The general consensus of many reporters was the breeding population of Purple Martins appeared much reduced this year. This was apparently reflected in the late summer roost that is expected along the Hiwassee River. It never really appeared and the very few individuals that did departed early.

Hawk watchers at Signal Point observed a Yellow-billed Cuckoo feeding two dependent young on the late date of 20 September. Intense mist netting was carried out by Rick Knight and Richard Lewis at Austin Springs while Chuck Nicholson also operated near Norris Dam. Their results have been incorporated in the body of the report.

Loon-Ibis: Common Loon: 24 Oct (3), 26 Oct (39) BOL (RLK); 27 Oct (2) CHL (KHD, LHD). Horned Grebe: 27 Sep (3) KSP (DRJ); 10 Nov (1) CHL (KHD, LHD); 17 Nov (47) BOL (RLK). Eared Grebe: 21 Sep (3) KSP (KHD, LHD). White Pelican: 2 Oct (2) CHA (RCS); 3-6 Nov (1) AUS (GDE, HLF). Double-crested Cormorant: 26 Sep, 3 Oct (1) AUS (RLK, RL); 12 Oct (1) HRA (RCS, LHD); 24 Oct (1) CHL (JWS); 26 Oct (4) AUS (RLK); 10 Nov (1) CHL (KHD, LHD). Great Blue Heron: regular, max 28 Nov (113) HRA (KHD, LHD); there always appear to be good numbers on Douglas Lake, max 11 Oct (189) (JAK). Green Heron: max 9 Aug (40) RAB (JAK); 11 Aug (14) KSP (KHD, LHD); 28 Aug (22) HRA (KHD, LHD); last 26 Sep (1) AUS (RLK), 22 Oct (2 heard at night) NRL (JCH). Little Blue Heron: 5-8 Aug (1 ad) SAB (KHD, LHD); 5 Sep (2) HRA (JWS); 8 Sep (3) KSP (KHD, LHD); 12 Sep (2) HRA (JWS). Cattle Egret: 8 Aug (1) HRA (KHD, LHD). Great Egret: 1 Aug (7) RAB (JAK); 4 Aug (1) HRA (KHD, LHD); 19 Aug (1) EBH (LJT); 22 Aug (1) RAB (JAK); 5, 8, 12 Sep (1) HRA (KHD, LHD, JWS); 4 Oct (3) RAB (JAK); 28 Nov (1) HRA (KHD, LHD). Black-crowned Night Heron: 14 Oct (1) AUS (SG, MD). Yellow-crowned Night Heron: 23 Aug (1 ad, 1 imm) HRA (*vide* J. W. Knott); 4 Nov (1) AUS (SG, DQ). White Ibis: 18, 30 Aug (1 imm) HRA (KHD, LHD).

Swan-Merganser: Whistling Swan: 28 Nov (1) CHL (LHD). Snow Goose: 27 Oct - 10 Nov (2 morph) HRA (KHD, LHD). Mallard: 24, 25 Aug (110 — this was late summer peak) KSP (KHD, LHD). Black Duck: 31 Aug (1) KSP (RCS). Gadwall: 5 Sep (1) KSP (KHD, LHD); 19 Oct (1) AUS (RLK). Pintail: 17, 25 Aug (1) KSP (KHD). Green-winged Teal: 14 Sep (4) KSP (KHD, LHD, RCS); max 28 Nov (375) HRA (KHD, LHD); 1 Nov (160) DOL (JAK); Blue-winged Teal: max 14 Sep (100) SAB (KHD, LHD, RCS); 21 Sep (100) HRA (KHD, LHD) with last on 11 Oct (1) AUS (RLK, RL). American Wigeon: 7, 8 Sep (1) KSP (KHD, LHD). Northern Shoveler: 28 Aug (1) SAB (LHD, JP); 22 Nov (1) DOL (JAK); 26 Nov (10) HRA (KHD, LHD). Redhead: 7 Nov (1) HRA (KHD, LHD); 21 Nov (1) DOL (JAK). Rink-necked Duck: 12 Oct (2) HRA (KHD, LHD, RCS); 22 Nov (50) DOL (JAK). Canvasback: 24, 25 Oct (1) SAB (KHD, LHD, RCS); 22 Nov (1) DOL (JAK). Greater Scaup: 17 Nov (35) CHL (KHD, LHD). Lesser Scaup: 24 Oct (1) SAB (KHD, LHD, RCS). Common Goldeneye: 28 Nov (1) CHL (KLD). Bufflehead: 7 Nov (1) HRA (KLD); 22 Nov (17) DOL (JAK). Black Scoter: 13 Nov (1) KSP (ARH). Ruddy Duck: 24 Oct (2) CHL (JWS). Hooded Merganser: max 24 Nov (233) HRA (KHD, LHD). Red-breasted Merganser: 17 Nov (5) BOL (RLK); 22 Nov (3) DOL (JAK).

Vulture-Coot: Turkey Vulture: 18 Oct (65) KNX (ARH, RDH). *SWALLOW-TAILED KITE*: 7 Sep (1 ad confirmed) Sequatchie Valley, north of Dunlap, Bledsoe County (KHD, LHD, DTC, JPC, Don & Audrey Perry) — TWRA officer Tommy Stanfill reported the species and stated he had seen as many as two present for at least a week. Cooper's Hawk: 7 Aug (1) SAB (KHD, LHD). Golden Eagle: 17 Sep (1) Citico, Tellico Lake (WKJ, Greg Reed); 3 Oct (1 ad) Elder Mt. (RCS, JTP). Bald Eagle: 1 during period NRL (JCH); 31 Aug (1) Decatur (KHD, LHD, RCS); 18 Sep (1 imm) AUS (RLK); 16 Oct (1) DOL (PSP). Marsh Hawk: 1-2 regular AUS (RLK *et al.*). Osprey: 13 Sep - 9 Oct (1 occasional) AUS (LHTOS). Peregrine Falcon: 5 Oct (1 imm) found wounded by gunshot near Crossville airport, currently at KNX zoo with prospects for release uncertain (MWA). Merlin: 9 Sep (1) Dunlap (CRH); 20 Sep (1) CHA (RCS); 23 Sep (1) KSP (RCS). Sandhill Crane: several flocks totaling about 160 between 6-9 Nov in KNX area (WKJ, CPN *et al.*); also flock of 25 on 29 Nov NOR (Ed Beddow); 24 Oct (4) SAB (KHD, LHD); 7 Nov (46) HRA (KLD, LHD); 12 Nov (16) Collegedale (Dave Mathewson, Jr.); 20 Nov (9) SAB (KLD). Virginia Rail: 1 Nov (1) McDonald area, Greene County (JAK). Sora: 26 Sep (2) AUS (RLK). *PURPLE GALLINULE*: 8-10 Sep (1 imm) HRA (first identified by RCS, later viewed by LHD — this is a first fall record and only the second record for the area since 1963). Common Gallinule: 12 Oct (1 imm) HRA (RCS, KHD, LHD). American Coot: 3 Aug - 8 Sep (2) KSP (KHD, LHD); regular, max 17 Nov (4000) HRA (KHD, LHD); 17 Nov (4500) CHL (KHD, LHD). *CARIBBEAN COOT*: 8 Nov - end of period (1) Chickamauga Dam (first observed by Kenneth McLean, later observed by many others) — details to be published.

Plover-Phalarope: Semipalmated Plover: 1 Aug - 12 Sep (8-25) RAB (JAK); 3 Aug - 14 Sep (2-17) KSP (KHD, LHD); 10 Aug (1) SJP (RLK); 13 Sep (3) SJP (HHD). Killdeer: Regular, max 20 Nov (197) HRA (KHD, LHD); 40-60 regular RAB (JAK). American Golden Plover: 5-12 Sep (1-4) RAB (JAK); 25 Sep - 5 Oct (2-4) KSP (KHD, LHD, DRJ, MWA). Black-bellied Plover: 10 Aug (2) KSP (KHD, LHD); 21 Aug (1) KSP (MWA); 21, 22 Aug (1) SAB (KHD, LHD, JP); 22 Aug - 12 Sep (1-2) RAB (JAK); 7 Nov (2) HRA (James T. Tanner). Ruddy Turnstone: 1 Aug (1) RAB (JAK); 29 Aug - 14 Sep (1-3) KSP (KHD, LHD). American Woodcock: 31 Oct (1) AUS (RLK). Common Snipe: 28 Aug (1) SAB (LHD, JP); 10 Sep (1) KSP (KHD, LHD); 28 Nov (84) SAB (KHD, LHD). Spotted Sandpiper: max 17 Aug (18) KSP (KHD, LHD); regular to 29 Sep AUS (RLK); 1 Aug (10) RAB (JAK). Willet: 21, 22 Aug (1) KSP (MWA, RCS *et al.*); 8 Sep (1) HRA (KHD, LHD). Greater Yellowlegs: 1-9 Aug (2-5) RAB (JAK); 3 Aug - 8 Sep (1-5) KSP (KHD, LHD); 4 Nov (1) AUS (GDE, HLF); 24 Oct - 2 Nov (16-22) HRA (KHD, LHD) with the last reported 10-13 Nov (3) SAB (KHD, LHD). Lesser Yellowlegs: 1 Aug - 13 Sep (20-83) RAB (JAK); 3 Aug - 29 Sep (1-32) KSP (KHD, LHD). Red Knot: 21 Aug (2) DOL (JAK); 31 Aug - 8 Sep (1) KSP (KHD, LHD, MWA). Pectoral Sandpiper: 1 Aug - 12 Sep (75-300) RAB (JAK); 3 Aug - 29 Sep (1-25) KSP (KHD, LHD); 27 Oct (30) SAB (KHD, LHD); 10 Nov (1) SAB (KHD, LHD). Baird's Sandpiper: 11 Aug (1) KSP (KHD, LHD); 31 Aug (3) KSP (KHD, LHD, RCS); 14 Sep (1) KSP (KHD, LHD, RCS). Least Sandpiper: regular, max 8 Sep (115) KSP (KHD, LHD). Dunlin: 23 Aug (1) KSP (RLK); 1 Sep (1) KSP (LHD); 11 Oct - 22 Nov (10-46) RAB (JAK); 27 Oct (6) AUS (RLK); 27 Oct (110) SAB (KHD, LHD); 27 Oct (187) HRA (KHD, LHD). Dowitcher spp.: 1 Aug - 12 Sep (4-125) RAB (JAK); 24 Aug - 14 Sep (1-9) KSP (KHD, LHD); 5 Sep (2) HRA (JWS); 15-19 Oct (2-5) HRA (KHD, LHD). Stilt

Sandpiper: 3 Aug - 14 Sep (1-4) KSP (KHD, LHD, CPN); 5-7 Sep (10) RAB (JAK); 26 Sep (1) RAB (JAK). Semipalmated Sandpiper: regular, max 8 Sep (220) KSP (KHD, LHD) with the last 15 Oct (1) HRA (KHD, LHD); 1 Aug - 12 Sep (35-249) RAB (JAK). Western Sandpiper: 9 Aug - 12 Sep (3-10) RAB (JAK); 15 Aug - 14 Sep (1-20) KSP (KHD, LHD); 31 Aug - 12 Sep (1-2) SJP (RLK *et al.*); 19 Sep (2) RAB (JAK); 1 Nov (4) RAB (JAK). Buff-breasted Sandpiper: 24 Aug (2) EBF (LJT); 25-29 Aug (1-2) KSP (KHD, LHD, MWA); 29 Aug (8) RAB (JAK); 14 Sep (1) KSP (KHD, LHD, RCS). Hudsonian Godwit: 5-7 Sep (1) HRA (CRH *et al.*). Details in *The Migrant* 52(3):69, 1981. Sanderling: 3 Aug - 14 Sep (1-3 occasional) KSP (KHD, LHD, ARH, RDH), 7 Sep (2) RAB (JAK); American Avocet: 7 Aug (1) KSP (MWA). Wilson's Phalarope: 22 Aug (1) KSP (LHD, RCS); 29 Aug (1) KSP (LHD). Northern Phalarope: 29 Aug, 5 Sep, 1 Nov (1) RAB (JAK); 8 Sep (1) KSP (KHD, LHD).

Gull-Woodpecker: Ring-billed Gull: 13 Sep (1) Fort Loudoun Dam (JAK); 3 Oct (1) BOL (RLK, RL); 20 Oct (15) CHL (EK). Forster's Tern: 18 Aug (1) SAB (KHD, LHD); 8 Sep (1) KSP (KHD, LHD); 27 Sep (11) KNX (PSP). Common Tern: 16 Aug, 5, 7 Sep (1) RAB (JAK). Caspian Tern: 9 Aug (1) KSP (DRJ); 18 Aug (1) HRA (KHD, LHD); 19 Aug (5) SAB (KHD, LHD); 20-29 Aug (1-2) SAB (LHD); 7 Sep (6) KSP (KHD, LHD); 23 Sep (2) CHL (RCS). Black Tern: 11 Aug - 7 Sep (2-20) RAB (JAK); 11 Aug - 10 Sep (1-13) occasional KSP (KHD, LHD, CPN, ARH); 29 Aug - 6 Sep (3-8) SAB (KHD, LHD). Yellow-billed Cuckoo: adult feeding two dependent young 20 Sep at Signal Point (*vide* R. Bruce Wilkey, Starr T. Klein, Michael & Barbara McMahan). Black-billed Cuckoo: 29 Sep (1) JNC (MD). Barn Owl: reported from NRL (JCH), Maryville (*vide* J. B. Owen) and White Pine (JAK). Common Nighthawk: main passage through KNX area 30 Aug-5 Sep; lower numbers than reported in 1980; last report, 1 on 12 Oct at Knoxville (Marcia Davis). Chimney Swift: last report 22 Oct (6) KNX (Bob & Lavada Harris). Red-headed Woodpecker: 27 Sep (3) SHR (JCH, CPN); 2 Oct (2) SHR (JCH).

Flycatcher-Pipit: yellow-bellied Flycatcher: 4 Oct (1 b) & 10 Oct (1 b) NOR (CPN); Traill's Flycatcher: 22 Aug - 11 Sep (3 b) NOR (CPN). Least Flycatcher: 9 Aug - 25 Sep (5 b) NOR (CPN). Eastern Wood Pewee: none banded at NOR, vs. 12 banded in 1980 (CPN). Tree Swallow: 19 Sep (900) RAB (JAK); 20 Sep (75) SAB (LHD); 20 Sep (100) HRA (EK); 25-27 Oct (2-45) SAB (KHD, LHD); 3 Oct (3) AUS (RL). Bank Swallow: 30 Aug - 19 Sep (50-200) RAB (JAK); 14 Sep (3) AUS (RLK). Rough-winged Swallow: 1 Aug SAB (KHD, LHD). Barn Swallow: 19 Oct (1) HRA (KHD). Cliff Swallows: 30 Aug - 7 Sep (200-300) RAB (JAK); 18 Sep (1) AUS (RLK). Red-breasted Nuthatch: good early movement into KNX area, first reports 9 Sep (1) SHR (JCH), 13 Sep (2) NOR (CPN) with them becoming uncommon toward the end of the period. In the Chattanooga area the first report was 11 Sep (LHD, JP) and then becoming widely distributed thereafter for the remainder of the period. Brown Creeper: first report, 7 Oct (1) SHR (JCH); good numbers KNX by end of period. Winter Wren: 10 Oct (1 b) NOR (CPN). *Catharus* thrushes: capture rate of Swainson's and Gray-checked at NOR was 1/4 the 1980 rate (CPN); abundant food crop in 1981 may not have concentrated birds as in 1980. Very poor flight of Veeries (CPN). Swainson's Thrush: 4 Nov (1) CHA (JP). Ruby-crowned Kinglet: 18 Sep (1) SHR (JCH); 19 Sep (1) JNC (HD); 19 Sep (1 b) NOR (CPN). Water Pipit: 26 Sep - 11 Nov (2-7) AUS (RLK *et al.*); 17 Oct (2) KSP (KHD, LHD).

Vireos-Warblers: Vireos: numbers banded at NOR of White-eyed, Yellow-throated, Red-eyed and Philadelphia were all much lower than in 1980 (CPN). White-eyed Vireo: last reports 19 Oct (1) SHR (JCH); 17 Oct (1) NOR (CPN). Red-eyed Vireo: good migratory movement during August at NOR, 46 b, many with fat deposits (CPN); general scarcity in KNX area during Sep; last reports, 10 Oct (1 b) NOR (CPN); 14 Oct (1) SHR (JCH). Philadelphia Vireo: first report 13 Sep (1 b) NOR (CPN) and last in KNX 14 Oct (1) SHR (JCH); well noted in the JNC area 24 Sep - 12 Oct with 1-3 being identified (SG, MD, Glenn Swofford). Warblers: good migration in KNX area. Worm-eating Warbler: several migrants (with fat deposits) banded during mid-August at NOR (CPN); 15 Aug (1) at home CHA (JP). Golden-winged Warbler: 2 Aug (1) at home CHA (JP). Blue-winged Warbler: common throughout season KNX; first report, 8 Aug (1 b) NOR (CPN); 10, 18, 19 Aug (1) at home CHA (JP); last, 3 Oct (1) KNX (ARH, RDH). Orange-crowned Warbler: 7 Oct (1) SHR (JCH); 12 Oct (1) JNC (SG); 31 Oct (1 b) NOR (CPN); 7 Nov (1) HRA (CPN). Nashville Warbler: 9 Sep (1) SHR (JCH). Northern Parula Warbler: 15 Aug (1) at home CHA (JP). Yellow Warbler: 15 Aug (1 b) NOR (CPN). Magnolia Warbler: 31 Aug (1) SHR (JCH). Blackburnian Warbler: 19 Aug (1) SHR (JCH). Palm Warbler: 7 Sep (1) SHR (JCH) — early there; 10 Sep - 6 Nov (seen in large numbers 100+ with 14 b) AUS (RLK, RL). Ovenbird: good movement at NOR during Aug and continuing into Oct (CPN). Mourning Warbler: 20 Sep (1 b) NOR (CPN). Wilson's Warbler: several reports from KNX and NOR between 19 Aug and 23 Sep (ARH, RDH, JCH, CPN).

Bobolink-Sparrow: Bobolink: 11 Sep - 7 Oct (2-9) AUS (RLK, RL). Orchard Oriole: 1 Aug (2) SAB (KHD, LHD) — this was the last report for the season in area where they used to be common till the end of the month. Northern Oriole: 16 Sep (3) SHR (JCH). Rose-breasted Grosbeak: very low numbers in KNX area — KNC fall count total only 10 on 27 Sep, average about 100 with last year's total 437 (CPN). Indigo Bunting: last 14 Oct (1) SHR (JCH). Evening Grosbeak: the only report for the period was 4 Nov (55) AUS (GDE, HLF). Purple Finch: first 19 Oct (1) AUS (RLK) and 9 Nov (1) CHA (JP); they were somewhat later than normal KNX and only present in small numbers (CPN). House Finch: 2-4 birds were regular thru the summer JNB area with migrating birds arriving in mid-Oct (RLK *et al.*); present in KNX area through period; numbers increasing in Oct and Nov (CPN). Pine Siskin: very few reports; 17 Oct (1 b) AUS (RLK, RL); 16 Nov (1) NOR (CPN); 17 Nov (5) CHL (KHD, LHD). Savannah Sparrow: 14 Sep - 11 Nov (52 b) AUS (RLK, RL). Henslow's Sparrow: 3 Nov (1 imm) SAB (KHD, LHD). Vesper Sparrow: 9 Oct - 7 Nov (1-4 regular with 2 b) AUS (RLK, RL); 24 Nov (1) CHL (KHD, LHD). Field Sparrow: 26 banded AUS (RLK, RL). White-crowned Sparrow: first fall sighting 2 Oct AUS followed by banding 42 (RLK, RL). White-throated Sparrow: first fall report 6 Oct (1) KNX (Mabel Sanders) and 11 Oct (1) AUS (RLK, RL). Fox Sparrow: 17 Oct (1 b) NOR (CPN). Lincoln's Sparrow: 26 Sep - 27 Oct (2-5 regular with 11 b) AUS (RLK, RL); 10-31 Oct (6 b) NOR (CPN). Swamp Sparrow: first report 4 Oct (1 b) NOR (CPN) and 67 banded AUS (RLK, RL). Song Sparrow: 11 Sep - 11 Oct (308 b) AUS (RLK, RL).

Locations: ALM — Alcoa Marsh; AMM — Amnicola Marsh; AUS — Austin Springs; BOL — Boone Lake; CHA — Chattanooga; CHL — Chickamauga Lake; COL — Cove Lake; DOL — Douglas Lake; EBF — Eagle Bend Fish Hatchery; FLL — Fort Loudoun Lake; GNC — Greene County; GRE — Greeneville; HRA — Hiwassee River Area; JEC — Jefferson County; JNB — Jonesboro; JNC —

Johnson City; KNC — Knox County; KSP — Kingston Steam Plant; KNX — Knoxville; MHL — Melton Hill Lake; NOR — Norris; NRL — Norris Lake; OKR — Oak Ridge; RAB — Rankin Bottoms (Cocke County section of Douglas Lake); SAB — Savannah Bay; SHR — Sharp's Ridge, Knoxville; SIP — Signal Point; SJP — St. John's Pond; TRG — Tennessee River Gorge.

KENNETH H. AND LILLIAN H. DUBKE, 8139 Roy Lane, Ooltewah 37363.

EASTERN MOUNTAIN REGION — Above average temperatures and below average rainfall along with an excellent wild food crop created some very interesting observations for our region. The cone crop on Roan Mountain was the best in my memory.

Late dates for some shorebirds and warblers, good vireo and warbler migration flights, and some early "northern finch" invasion movements have made for very interesting birding this period. Also notable were the high numbers of raptors reported from the Look Rock area in the Smokies. This compiler appreciates the much needed reports that came in from the southern part of the region this period. One interesting and maybe confusing side note is that from mid-summer through the end of November, numerous Red Crossbills were reported from the Great Smoky Mountains. In similar habitat, only a few air miles away in the Roan, Iron, and Unaka Mountains, however, only 2 single crossbills were reported.

Loon-Vulture: Common Loon: first fall sighting 28 Nov (1) WTL (HLF). Great Blue Heron: more numerous in area than compared to previous years. Green Heron: last seen 26 Sep (1) RC (EHS). Green-winged Teal: first fall 25 Oct (1) WibL (TL, RP). Wood Duck: large concentrations during Sep and Oct with a few staying until end of period. Bufflehead: first fall 22 Oct (2) WibL (GDE, HLF). Hooded Merganser: first fall 22 Oct (1) WatR (GDE, HLF). Red-breasted Merganser: 19 Nov (11 females) WTL (GDE, HLF). Turkey Vulture: 22 Oct (8 migrating) over RM (TL, RP); 29 Oct (10 migrating) over RM (GDE, HLF); 24 Oct (205 migrating) over LR (ARH, RDH). Black Vulture: 24 Oct (14 migrating) over LR (ARH, RDH).

Kite-Crane: *KITE* spp.: 20 Sep (1 migrating) over LR (BHS). Sharp-shinned and Cooper's Hawks: above average sightings through out period. *GOSHAWK*: 13 Aug (1) RM (TL, RP). Red-shouldered Hawk: 19 Sep (6), 23 Sep (7) over LR (BHS, SJS); 29 Oct (1 migrating) RM (GDE, HLF). Broad-winged Hawk: 19 Sep (5632 on 1 day) LR (BHS, SJS). Eagle spp.: 29 Oct (1) RM (GDE, HLF). Marsh Hawk: 24 Sep (7), 26 Sep (9) over LR (BHS, SJS). Peregrine Falcon: 18 Sep (1), 24 Oct (1 ad) LR (ARH, RDH). Merlin: 12 Oct (1) ELI (HLF). Sandhill Crane: 8 Nov (38) migrating over Walland (ARH, RDH).

Yellowlegs-Waxwing: Greater Yellowlegs: last 6 Nov (2) late, RC (GDE, GS). Pectoral Sandpiper: last 26 Sep (4) RC (GDE, HLF). Dunlin: 6 Nov (2) RC (GDE, GS). Sanderling: 26 Sep (2) RC (GDE, HLF). Forster's Tern: 2 Aug (8) WTL (GDE). Black-billed Cuckoo: last 2 Oct (1) HS (SG). Yellow-bellied Sapsucker: first fall 26 Sep (1) RC (GDE, HLF). Least Flycatcher: last 12 Sep (1) RM (EHS). Blue Jay: 14-22 Oct (250-300) migrating over RM (TL, RP). Common Raven: beginning 10 Oct several low elevation reports, ELI area. Red-breasted Nuthatch: returned to high elevations on RM in early Sep, abundant on RM and in GSMNP since then. Hermit Thrush: first fall 19 Nov (1) Erwin (GS). Swainson's Thrush:

last 29 Oct (1) late, RM (GDE, HLF). Water Pipit: 24 Sep (2) LR (BHS, SJS); 21 Oct (2) RM (HLF). Cedar Waxwing: plentiful in ELI area through period.

Vireo-Blackbird: Solitary Vireo: last 8 Nov (1) Chilhowee Mtn. (ARH). Philadelphia Vireo: 26 Sep (3) IMG (SG, GS). Golden-winged Warbler: last 12 Sep (1) RM village (SG). Blue-winged Warbler: last 31 Oct, late (1) ELI (HLF). Orange-crowned Warbler: 2 Oct (1) HS (MD, SG). Nashville Warbler: last 12 Oct (1) ELI (HLF). Black-throated Blue Warbler: 24 Nov (1) WTL (GDE, HLF) — 33 days later than previous late date. Yellow-rumped Warbler: first 15 Sep (2) ELI (HLF). Palm Warbler: last 6 Nov (3) RC (GDE, GS), late. Northern Oriole: last 21 Sep (1) Erwin (GS). Rusty Blackbird: 27 Nov (5) ELI (GDE).

Grosbeak-Snow Bunting: Evening Grosbeak: first 9 Nov (45+) RM (GDE, HLF), up to 300 on RM by end of period; also present high elev., GSMNP. Purple Finch: first 12 Oct (2) ELI (HLF), small numbers since then. House Finch: first 25 Nov (1) ELI (GDE). Pine Siskin: first 22 Oct (75+) RM (TL, RP); up to 400 on RM since then; 14 Nov (80) NFG (David A. Hankins). Red Crossbill: 10 Aug (7) NFG (AHH); numerous other small flocks reported in GSMNP; 29 Oct (30) Clingmans Dome, GSMNP (MPS). Vesper Sparrow: 16 Aug (2) Hump Mtn (EHS). Chipping Sparrow: last 27 Nov (2) ELI (GDE). White-throated Sparrow: first 11 Oct (1) ELI (HLF). Fox Sparrow: first 9 Nov (2) RM (GDE, HLF, RLK). Snow Bunting: 14-18 Nov (6-8) RM (RLK, EHS).

Locations: ELI — Elizabethton area; GSMNP — Great Smoky Mtns. National Park; HS — Hunter Swamp, Elizabethton; IMG — Iron Mountain Gap; LR — Look Rock, Chilhowee Mountain; NFG — Newfound Gap; RC — Roans Creek; RM — Roan Mountain; WTL — Watauga Lake; WatR — Watauga River; WBL — Wilbur Lake.

GLEN D. ELLER, Route #3, Grandview Terrace, Elizabethton 37643.

OBSERVERS

JCA—Jan C. Alexander	LKD—Lisa K. Dougherty
MWA—Marc W. Armstrong	HHH—Helenhill Dove
JWB—John W. Bates	KHD—Kenneth H. Dubke
WJB—William J. Bean	LHD—Lillian H. Dubke
EB—Earline Berry	LBD—Lucius B. DuBose
DWB—Donald W. Blunk	DBD—Daryl B. Durham
JLB—Jane L. Bridgman	GDE—Glen D. Eller
CHB—Carolyn H. Bullock	HLF—Harry L. Farthing
BBC—Ben B. Coffey, Jr.	JAF—James A. Ferguson
LCC—Lula C. Coffey	SCF—Sue C. Ferguson
BJC—Bonnie Coplin	RJF—Ray J. Fleischer
DTC—Dot T. Crawford	JDF—John D. Fort
JPC—J. Paul Crawford	SG—Sally Goodin
DAD—Dollyann Daily	KAG—Katherine A. Goodpasture
MD—Martha Dillenbeck	JH—Jaunita Harris
HBD—Helen B. Dinkelspiel	TNH—Tom N. Harston

OBSERVERS (Cont'd.)

AHH—Annie H. Heilman

ALH—Anne L. Hettish

ARH—Audrey R. Hoff

RDH—Ron D. Hoff

JCH—Joseph C. Howell

DRJ—Daniel R. Jacobson

WKJ—Wesley K. James

RLK—Richard L. Knight

EK—Elena Killian

JAK—J. Anthony Koella

LFK—Lee F. Kramer

TL—Tom Laughlin

RL—Richard Lewis

SLL—Selma L. Lewis

MLM—Margaret L. Mann

DM—Don Manning

GM—Gina Manning

AN—Anne Nichols

CPN—Charles P. Nicholson

PSP—Paul S. Pardue

JPT—Johnny T. Parks

WRP—William R. Peeples

JP—Janet Phillips

RP—Rick Phillips

DQ—Dorothy Quay

EMQ—Elizabeth M. Queener

HAR—Heather A. Riggins

JNR—John N. Riggins

ER—Erma Rogers

EHS—Edward H. Schell

RWS—Richard W. Simmers

HAS—H. Alice Smith

DNS—David N. Snyder

CKS—Claudia K. Spotts

MPS—M. Pat Stallings

BJS—Barbara J. Stedman

SJS—Stephen J. Stedman

CHS—Carol H. Stewart

JLS—John L. Stokes

JWS—Jowayne Stone

RCS—Randy C. Stringer

GS—Glen Swafford

DV—Dave Vance

DFV—David F. Vogt

MGW—Martha G. Waldron

EJW—Ellen J. Walker

DW—Dan Wells

WLW—Wendell L. Whittemore

JRW—Jeff R. Wilson

LPW—Lillian P. Wurzel

HCY—Harry C. Yeatman

LHTOS—Lee Herndon Chapter, TOS

NTOS—Nashville Chapter, TOS

TOS—Tenn. Ornithological Society



PREPARATION OF COPY FOR PUBLICATION

The purpose of THE MIGRANT is the recording of observations and original information derived from the study of birds, primarily in the state of Tennessee or the area immediately adjacent to its borders. Articles for publication originate almost exclusively from T.O.S. members.

Contributors should prepare manuscripts and submit them in a form acceptable to the printer, after editorial approval. Both articles and short notes are solicited but their format should be somewhat different.

Some suggestions to authors for the preparation of papers for publication are given herewith.

MATERIAL: The subject matter should relate to some phase of Tennessee Ornithology. It should be original, factual, concise, scientifically accurate, and not submitted for publication elsewhere.

TITLE: The title should be concise, specific, and descriptive.

STYLE: Recent issues of THE MIGRANT should be used as a guide in the preparation of manuscripts. Where more detail is needed reference should be made to the *Style Manual for Biological Journals* available from the American Institute of Biological Sciences, 1401 Wilson Boulevard, Arlington, Virginia 22209.

COPY: Manuscripts should be typed double spaced on 8½ x 11" paper with adequate margins, for editorial notations, and should contain only entries intended for setting in type, except the serial page number. Tabular data should be entered on separate sheets with appropriate title and column headings. Photographs intended for reproduction should be sharp with good contrast on glossy white paper in black and white (not in color). Instructions to the editors should be given on a separate sheet. Weights and measurements should be in metric units. Dating should be in "continental" form (e.g., 7 March 1981).

NOMENCLATURE: Common names should be capitalized followed by binomial scientific names in italics only after the first occurrence in the text for both regular articles and ROUND TABLE NOTES, and should conform to the A.O.U. Check-list 5th edition, 1957 and its Thirty-second Supplement. Trinomial should be used only after the specimen has been measured or compared with typical specimens.

BIBLIOGRAPHY: When there are more than five references in an article, they should be placed at the end of the article, otherwise they should be appropriately included in the text.

SUMMARY: Articles of five or more pages in length should be summarized briefly, drawing attention to the main conclusions resulting from the work performed.

IDENTIFICATION: Rare or unusual species identification to be acceptable must be accompanied by verifying evidence. This should include: date, time, light and weather conditions, exact location, habitat, optical equipment, distance, behavior of bird, comparison with other similar species, characteristic markings, experience of observer, other observers verifying observation and reference works consulted.

REPRINTS: Reprints are available on request. Reprint requests should accompany article at the time of submission. Billing to authors will be through the state T.O.S. Treasurer.

Books for review and articles for publication should be submitted to the editor. Seasonal reports and items should be forwarded to the appropriate departmental editor whose name and address will be found on the inside front cover.

CONTENTS

FIRST RECORD OF OCCURRENCE AND POSSIBLE NESTING OF BLACK-BELLIED WHISTLING-DUCK IN TENNESSEE. <i>T. David Pitts</i>	1
BOOK REVIEW. <i>Charles P. Nicholson</i>	3
THE 1981 CHRISTMAS BIRD COUNT. <i>Richard D. Lura</i>	4
MAGAZINE REVIEW. <i>Charles P. Nicholson</i>	11
ROUND TABLE NOTES	
Fish Crows over Savannah Bay, Hamilton County, Tennessee. <i>Kenneth H. Dubke</i>	12
Seed-Cracking Attempts by a Carolina Wren. <i>J. Christopher Haney</i>	12
Nest Box Utilization by Hooded Mergansers at Hatchie National Wildlife Refuge. <i>Martha G. Waldron</i>	13
THE SEASON. Fall Migration: 1 August - 30 November 1981.	
Western Coastal Plain Region. <i>Martha G. Waldron</i>	14
Central Plateau and Basin Region. <i>Michael Lee Bierly</i>	15
Eastern Ridge and Valley Region. <i>Kenneth H. and Lillian H. Dubke</i> ..	17
Eastern Mountain Region. <i>Glen D. Eller</i>	22
Observers	23
Illustrations by <i>Dave Mathewson, Jr.</i>	