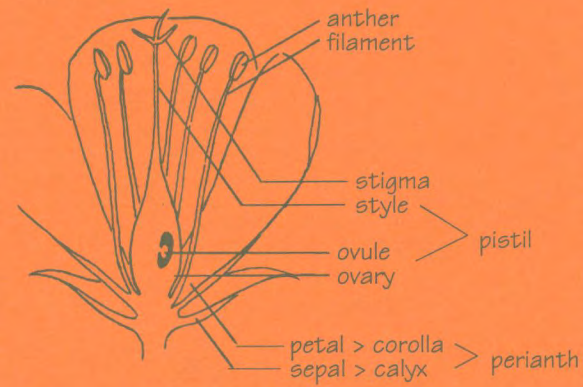


SPECIES	FLOWER COLOR	FLOWER TIME	LIFESPAN
___ Tumblemustard <i>Sisymbrium loeselii</i> ●	Yellow	May-Aug	Ann/Bien
<b>NETTLES</b>			
___ Stinging Nettle <i>Urtica dioica</i> ●	Gray	June-Sep	Perennial
<b>NIGHTSHADES</b>			
___ Black Henbane <i>Hyoscyamus niger</i> ●	Cream	June-Aug	Annual
___ Climbing nightshade <i>Solanum dulcamara</i> ●	Purple	June-Aug	Perennial
<b>PARSNIPS</b>			
___ Parsnip <i>Pastinaca sativa</i> ●	Yellow	Jun-Jul	Bien/Per
___ Water-hemlock <i>Cicuta douglasii</i>	White	Jun-Aug	Perennial
___ Water-parsnip <i>Sium suave</i>	White	Jul-Aug	Perennial
<b>PEAS</b>			
___ Licorice-root <i>Glycyrrhiza lepidota</i>	White	Jul-Aug	Perennial
___ Slender Vetch <i>Vicia tetrasperma</i> ●	Lavendar	Jun-Aug	Ann/Bien
___ Velvet Lupine <i>Lupinus leucophyllus</i>	Blue	Jun-Aug	Perennial
___ Woolly Vetch <i>Vicia villosa</i> ●	Purple	Jun-Aug	Ann/Bien
<b>PHLOXES</b>			
___ Jacob's Ladder <i>Polemonium pulcherrimum</i>	Blue	May-Jun	Perennial
___ Microsteris <i>Microsteris gracilis</i>	Pink	Apr-Jun	Annual
___ Narrow-leaf Collomia <i>Collomia linearis</i>	Pink	Jun-Aug	Annual
___ Scarlet Gilia <i>Gilia aggregata</i>	Red	Jun-Aug	Biennial
<b>PINKS</b>			
___ White Campion <i>Lychnis alba</i> ●	White	Jul-Aug	Bien/Per
<b>PLANTAINS</b>			
___ Indian Wheat <i>Plantago patagonica</i>	White	Jun-Jul	Perennial
<b>PORTULACAS</b>			
___ Narrow-leaved Montia <i>Montia linearis</i>	Pink	May-Jul	Annual
<b>PRIMROSES</b>			
___ Fairy Candelabra <i>Androsace occidentalis</i>	White	Apr-Jun	Annual
___ Fringed Loosestrife <i>Lysimachia ciliata</i>	Yellow	Jul-Aug	Perennial
<b>SAXIFRAGES</b>			
___ Woodlandstar <i>Lithophragma parviflora</i>	White	Apr-Jun	Perennial
<b>SEDUMS</b>			
___ Stonecrop <i>Sedum lanceolatum</i>	Yellow	Jun-Jul	Perennial
<b>WATERLEAVES</b>			
___ Threadleaf Phacelia <i>Phacelia linearis</i>	Blue	Apr-Jun	Annual



Parts of a Flower



For additional information contact:  
 Refuge Manager  
 Lee Metcalf National Wildlife Refuge  
 P.O. Box 257  
 Stevensville, MT 59870  
 (406) 777-5552

Lee Metcalf NWR would like to acknowledge the following for their contributions:

- Wallace Albert      flower identification
- Peter Stickney      flower identification
- Sheila Morrison    flower identification
- species list
- Pat Bartholemew    artwork

Cover: Threadleaf Phacelia  
 Scarlet Gilia  
 White Wintergreen



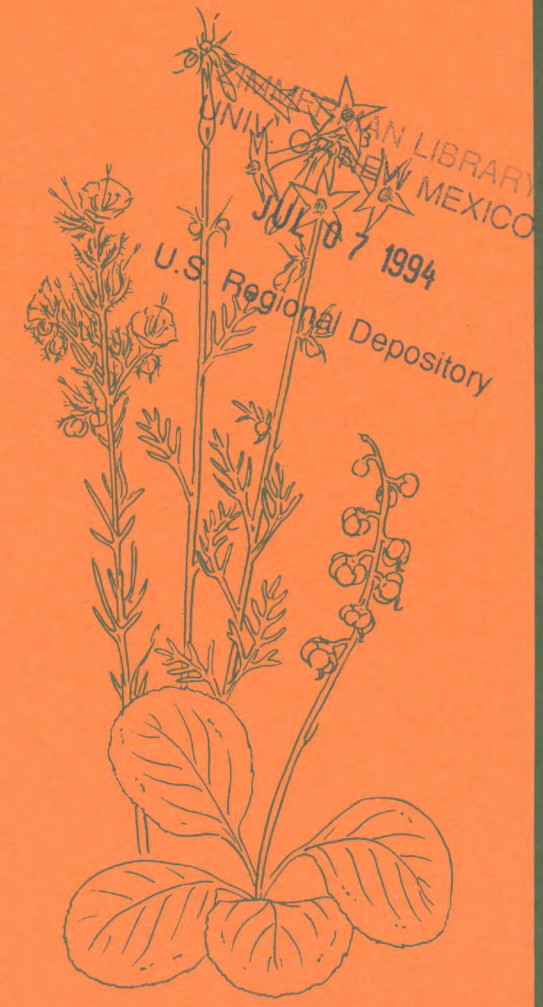
U.S. Fish and Wildlife Service  
 Department of the Interior



Revised  
 June 1993

# Wildflowers

## Lee Metcalf National Wildlife Refuge



Wildflowers abound on Lee Metcalf National Wildlife Refuge, where the diverse habitat includes deep, fertile marshes, wet meadows, and forested riverbottoms. Although much of the 2,800-acre Refuge has been disturbed, many native plants still exist and can be seen from the county road or along the nature trails open to the public year round. This is only a partial list of the more than 400 species found on the Refuge. Enjoy the flowers, but please leave them for others to admire.

SPECIES •denotes introduced species	FLOWER COLOR	FLOWER TIME	LIFESPAN
<b>ASTERS</b>			
— Blanket Flower <i>Gaillardia aristata</i>	Orange	Jun-Jul	Perennial
— Canada Thistle <i>Cirsium arvense</i> •	Purple	Jul-Aug	Perennial
— Common Sagewort <i>Artemisia campestris</i>	Green	Jul-Sep	Biennial
— Cut-leaf Daisy <i>Erigeron compositus</i>	White	May-Jun	Perennial
— Goldenrod <i>Solidago spp</i>	Yellow	Aug-Sep	Perennial
— Gray Sagewort <i>Artemisia ludoviciana</i>	Gray	Jun-Oct	Perennial
— Heath-leaved Aster <i>Aster pansus</i>	White	Aug	Perennial
— Leafy Arnica <i>Arnica chamissonis</i>	Yellow	Jul	Perennial
— Microseris <i>Microseris troximoides</i>	Yellow	Jun-Jul	Perennial
— Musk Thistle <i>Carduus nutans</i> •	Purple	Jun-Oct	Biennial
— Ox-eye Daisy <i>Chrysanthemum leucanthemum</i> •	White	May-Oct	Perennial
— Pineapple Weed <i>Matricaria matricarioides</i>	Yellow	May-Sep	Annual
— Pussytoes <i>Antennaria microphylla</i>	Pink/Wte	May-Aug	Perennial
— Salsify <i>Tragopogon dubius</i> •	Yellow	Jun-Jul	Ann/Bien
— Sow Thistle <i>Sonchus oleraceus</i> •	Yellow	Jul-Sep	Annual
— Spotted Knapweed <i>Centaurea maculosa</i> •	Purple	Jun-Oct	Bien/Per
— Sunflower <i>Helianthus nutalli</i>	Yellow	Jul-Aug	Perennial
— Tansy <i>Tanacetum vulgare</i> •	Yellow	Aug-Oct	Perennial
— Wooly groundsel <i>Senecio canus</i>	Yellow	Jun-Aug	Perennial
— Yarrow <i>Achillea millefolium</i>	White	May-Oct	Perennial
<b>BALSAM</b>			
— Spurless Jewelweed <i>Impatiens ecalcarata</i>	Orange	Jul-Aug	Annual
<b>BEDSTRAW</b>			
— Northern Bedstraw <i>Galium boreale</i>	White	Jun-Aug	Perennial
<b>BORAGES</b>			
— Forget-me-not <i>Myosotis laxa</i>	Blue	Jun-Aug	Annual
— Hound's-tongue <i>Cynoglossum officinale</i> •	Purple	Jun-Aug	Biennial
<b>BUCKWHEAT</b>			
— Curly Dock <i>Rumex crispus</i> •	Green	Jun-Sep	Perennial
— Douglas' Knotweed <i>Polygonum douglasii</i>	White	Aug	Annual
— Umbrella Plant <i>Eriogonum umbellatum</i>	Cream	Jun-Aug	Perennial
— Water Lady's-thumb <i>Polygonum amphibium</i>	Pink	Jun-Jul	Perennial
<b>BUTTERCUPS</b>			
— Creeping Buttercup <i>Ranunculus repens</i> •	Yellow	Jun-Jul	Perennial



Perennial - lasting from year to year  
 Biennial - flowers every other year  
 Annual - of only 1 year's duration

SPECIES	FLOWER COLOR	FLOWER TIME	LIFESPAN
— Lesser Spearwort <i>Ranunculus flammula</i>	Yellow	Jun-Jul	Perennial
— Meadowrue <i>Thalictrum dasycarpum</i>	White	Jun-Jul	Perennial
— Rock Clematis <i>Clematis columbiana</i>	Blue	Jun-Jul	Perennial
— Sagebrush Buttercup <i>Ranunculus glaberrimus</i>	Yellow	Apr	Perennial
— Western Clematis <i>Clematis ligusticifolia</i>	White	Jun-Jul	Perennial
<b>CACTI</b>			
— Brittle Cholla <i>Opuntia fragilis</i>	Yellow	Jun-Jul	Perennial
<b>CATTAILS</b>			
— Cattail <i>Typha latifolia</i>	Brown	Jun-Jul	Perennial
<b>DOGBANE</b>			
— Dogbane <i>Apocynum androsaemifolium</i>	Pink	Jun-Sep	Perennial
<b>FIGWORTS</b>			
— Butter-and-eggs <i>Linaria vulgaris</i> •	Yellow	Aug	Perennial
— Monkeyflower <i>Mimulus guttatus</i>	Yellow	Jun-Aug	Ann/Per
— Mullein <i>Verbascum thapsus</i> •	Yellow	Aug	Biennial
— Penstemon <i>Penstemon procerus</i>	Blue	Jun-Jul	Perennial
— Water speedwell <i>Veronica anagallis-aquatica</i> •	Blue	Jun-Sep	Bien/Per
<b>GERANIUMS</b>			
— Filaree <i>Erodium cicutarium</i> •	Pink	May-Aug.	Annual
<b>HAREBELLS</b>			
— Harebell <i>Campanula rotundifolia</i>	Blue	Jun-Aug	Perennial
<b>HEATH</b>			
— Pinedrops <i>Pterospora andromedea</i>	Pink	Jun-Aug	Perennial
— White Wintergreen <i>Pyrola elliptica</i>	White	Jul	Perennial
<b>HORSETAILS</b>			
— Horsetail <i>Equisetum spp</i>	Green	Jun-Sep	Ann/Per
<b>IRISES</b>			
— Yellow Flag <i>Iris pseudacorus</i> •	Yellow	Jun-Jul	Perennial
<b>LILIES</b>			
— Death Camas <i>Zigadenus venenosus</i>	Cream	May-Jul	Perennial
— False Solomon's Seal <i>Smilacina stellata</i>	White	May-Jun	Perennial
— Nodding Onion <i>Allium cernuum</i>	Pink	Jun-Jul	Perennial
<b>MINTS</b>			
— Betony <i>Stachys palustris</i>	Pink	Jul-Aug	Perennial
— Field Mint <i>Mentha arvensis</i>	Purple	Jul-Aug	Perennial
— Purple Dragon's-head <i>Physostegia parviflora</i>	Purple	Jun-Aug	Perennial
— Scullcap <i>Scutellaria galericulata</i>	Blue	Jun-Aug	Perennial
— Self-heal <i>Prunella vulgaris</i>	Purple	Jun-Sep	Perennial
<b>MUSTARDS</b>			
— Draba <i>Draba verna</i>	White	Apr-May	Annual
— Rockcress <i>Arabis holboellii</i>	Pink	May	Bien/Per