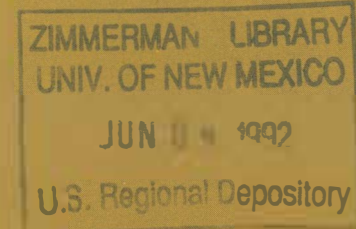


Birds  
of  
the

CHARLES  
M.  
RUSSELL  
National  
Wildlife  
Refuge, Montana

	S	S	F	W
<b>Nuthatches:</b>				
White-breasted Nuthatch	o	o	r	
Red-breasted Nuthatch	c	c	c	o
<b>Creepers:</b>				
Brown Creeper	o			
<b>Dippers:</b>				
American Dipper	u	u		
<b>Wrens:</b>				
House Wren	c	c	c	
Marsh Wren	r	c		
Rock Wren	c	c	c	
<b>Mockingbirds, Thrashers:</b>				
Northern Mockingbird				
Gray Catbird	c	c	c	
Brown Thrasher	c	c	c	
Sage Thrasher	u	u	u	
<b>Thrushes, Bluebirds:</b>				
American Robin	c	a	c	o
Hermit Thrush	o	u		
Swainson's Thrush	o	u		
Gray-cheeked Thrush	o	o		
Veery				
Eastern Bluebird				
Mountain Bluebird	c	a	c	
Townsend's Solitaire	o	u	o	
<b>Gnatcatchers, Kinglets:</b>				
Golden-crowned Kinglet	o	o		
Ruby-crowned Kinglet	o	o		
<b>Pipits:</b>				
American Pipit	o	o	o	
Sprague's Pipit	u	u	o	
<b>Waxwings:</b>				
Bohemian Waxwing	c	c	a	
Cedar Waxwing	c	u	u	o
<b>Shrikes:</b>				
Northern Shrike	o	o	u	
Loggerhead Shrike	c	c	c	
<b>Starlings:</b>				
European Starling	c	c	c	o
<b>Vireos:</b>				
Red-eyed Vireo	u	o		
Warbling Vireo	c	c	o	
<b>Wood Warblers:</b>				
Tennessee Warbler				
Orange-crowned Warbler				
Yellow Warbler	c	c	c	
Yellow-rumped Warbler	u	o	u	
Blackpoll Warbler	o	o	o	
Black-and-white Warbler	u	r	u	
Palm Warbler	o	o		
Ovenbird	u	u	u	
Northern Waterthrush	o	o		
Mac Gillivray's Warbler				

	S	S	F	W
Common Yellowthroat	c	c	c	
Yellow-breasted Chat	u	u	u	
Wilson's Warbler	u	c		
American Redstart	u	u	u	
<b>Weaver Finches:</b>				
House Sparrow	a	a	a	a
<b>Meadowlarks, Blackbirds, Orioles:</b>				
Bobolink	c	c		
Western Meadowlark	a	a	a	o
Yellow-headed Blackbird	c	a	c	
Red-winged Blackbird	c	a	c	o
Orchard Oriole	o	o		
Northern Oriole	c	c	c	
Rusty Blackbird				
Brewer's Blackbird	c	a	c	
Common Grackle	o	c	o	
Brown-headed Cowbird	c	c	c	
<b>Tanagers:</b>				
Western Tanager	c	o	c	
<b>Grosbeaks, Finches, Sparrows, Buntings:</b>				
Rose-breasted Grosbeak	u	u	u	
Black-headed Grosbeak	u	u	u	
Indigo Bunting				
Lazuli Bunting	r	u		
Evening Grosbeak				u
Pine Grosbeak				u
Rosy Finch	u	u	o	
Hoary Redpoll				
Common Redpoll	u		u	
Pine Siskin	c	o	o	o
American Goldfinch	c	a	c	
Red Crossbill	u	c	u	c
Green-tailed Towhee	o	o		
Rufous-sided Towhee	c	c	c	
Lark Bunting	a	a		
Savannah Sparrow	u	c	u	
Grasshopper Sparrow			u	
Vesper Sparrow	u	c	u	
Lark Sparrow	u	c	u	
Dark-eyed Junco	c	o	u	
American Tree Sparrow	c	c	o	
Chipping Sparrow	c	a	c	
Clay-colored Sparrow	c	c	u	
Brewer's Sparrow	r	r		
Field Sparrow	u	c	u	
Harris' Sparrow	c	c		
White-crowned Sparrow	c	c	c	
White-throated Sparrow	o	o		
Lincoln's Sparrow	o			
Song Sparrow	c	c	c	
McCown's Longspur	o	o		
Lapland Longspur	u	u	u	
Chestnut-collared Longspur	u	c		
Snow Bunting				o

As the Nation's principal conservation agency, the Department of the Interior has basic responsibilities for water, fish, wildlife, mineral, land, park, and recreational resources. Indian and Territorial affairs are other major concerns of America's "Department of Natural Resources."

The Department works to assure the wisest choice in managing all our resources so each will make its full contribution to a better United States—now and in the future. Take Pride in America—learn about your public lands.

**Please Note:**

*We would appreciate your help! If you observe birds that are listed as rare or if you notice unusual concentrations or activities of birds on this Refuge, please report the following information by letter or telephone to the Refuge Manager:*

Your name, address \_\_\_\_\_  
 date, weather, exact location \_\_\_\_\_  
 species, number of birds, \_\_\_\_\_  
 distinguishing features and/or \_\_\_\_\_  
 activities \_\_\_\_\_

When in doubt as to any refuge regulation, contact a refuge officer.

Where to write for current regulations and information:

**Refuge Manager**  
**Charles M. Russell National Wildlife Refuge**  
**P.O. Box 110**  
**Lewistown, MT 59457**

U.S. DEPARTMENT OF THE INTERIOR  
 Fish and Wildlife Service



RF6 61520 2



GPO 836-377



March 1992



Clark's nutcracker.

During spring a medley of cries, calls and wingbeats fill the air. Meadowlarks and vesper sparrows announce their seasonal territories from the stalks of last year's grass. The loud musical call of an upland sandpiper or long-billed curlew occasionally breaks through the heat of summer. Late June through August, thousands of mourning doves nest in the "breaks" of the Missouri.

Most of the 240 species included in this list can be seen on the refuge at some time during the year in the proper habitat. Mid-April through June is a particularly interesting time to visit the refuge. It is the green-up period and multitudes of bird life are moving northward over the land. Year-long and summer residents begin their courtships and establish territories. Armed with binoculars and bird guide, a visit to the refuge will provide a rewarding experience to the novice and expert birder.

**EXPLANATION OF SYMBOLS:**

**Seasons:**

**S** — March-May

**S** — June-August

**F** — September-November

**W** — December-February

Birds nesting locally are preceded by an •. Threatened or Endangered Species are followed by a (T) or an (E). Symbols indicative of seasonal abundance of each species are as follows:

- a** — abundant: a common species which is very numerous;
- c** — common: certain to be seen in suitable habitat;
- u** — uncommon: present, but not certain to be seen;
- o** — occasional: seen only a few times during a season;
- r** — rare: seen at intervals of 2 to 5 years;

The following bird list is in accordance with the sixth A.O.U. check list as amended. New names are used in all cases.

**Loons:** S S F W

Common Loon . . . . . c u u

**Grebes:**

Red-necked Grebe . . . . . r  
 Horned Grebe . . . . . u u  
 • Eared Grebe . . . . . c c c

Western Grebe . . . . . c c c  
 Pied-billed Grebe . . . . . c c c

**Pelicans, Cormorants:**

American White Pelican . . . . . c c c  
 Double-crested Cormorant . . . . . c c c

**Hérons, Bitterns:**

Great Blue Heron . . . . . c c c  
 Snowy Egret . . . . . r  
 Black-crowned Night Heron . . . . . c o  
 American Bittern . . . . . u u u

**Swans, Geese, Ducks:**

Tundra Swan . . . . . o o  
 Canada Goose . . . . . c c c o  
 Greater White-fronted Goose . . . . . o o  
 Snow Goose . . . . . u u  
 Ross' Goose . . . . . r r  
 Mallard . . . . . a c a c  
 American Black Duck . . . . . r r  
 Gadwall . . . . . c c c  
 Northern Pintail . . . . . a c c o  
 Green-winged Teal . . . . . c c c  
 Blue-winged Teal . . . . . c a c  
 Cinnamon Teal . . . . . r r  
 American Wigeon . . . . . c c c  
 Northern Shoveler . . . . . c c c  
 Wood Duck . . . . . o o  
 Redhead . . . . . c u c  
 Ring-necked Duck . . . . . o o  
 Canvasback . . . . . c u c  
 Lesser Scaup . . . . . c u c  
 Common Goldeneye . . . . . c u c c  
 Barrow's Goldeneye . . . . . o o  
 Bufflehead . . . . . c u c o  
 Oldsquaw . . . . . r r  
 White-winged Scoter . . . . . r r  
 Ruddy Duck . . . . . c u c  
 Hooded Merganser . . . . . r r  
 Common Merganser . . . . . c u c c  
 Red-breasted Merganser . . . . . c o o

**Vultures, Hawks, Eagles, Falcons:**

Turkey Vulture . . . . . o  
 Northern Goshawk . . . . . o o  
 Sharp-shinned Hawk . . . . . u u u  
 Cooper's Hawk . . . . . o o o  
 Red-tailed Hawk . . . . . a c a  
 Broad-winged Hawk . . . . . r r  
 Swainson's Hawk . . . . . c c c  
 Rough-legged Hawk . . . . . c c c  
 Ferruginous Hawk . . . . . o u o  
 Golden Eagle . . . . . c c c c  
 Bald Eagle (E) . . . . . c u c  
 Northern Harrier . . . . . c a c o  
 Osprey . . . . . c c u  
 Gyrfalcon . . . . . r r  
 Prairie Falcon . . . . . u u u o  
 Peregrine Falcon (E) . . . . . r r

S S F W

Merlin . . . . . u r u o  
 American Kestrel . . . . . c a c

**Grouse, Pheasants, Partridges, Turkeys:**

Sharp-tailed Grouse . . . . . c c c c  
 Sage Grouse . . . . . c c c c  
 Ring-necked Pheasant . . . . . c c c c  
 Gray-Partridge . . . . . c c c c  
 Wild Turkey . . . . . u u u u

**Cranes, Rails:**

Sandhill Crane . . . . . c c  
 Virginia Rail . . . . . r r  
 Sora . . . . . u u u  
 American Coot . . . . . c c c o

**Shorebirds, Gulls, Terns:**

Semipalmated Plover . . . . . c c  
 Piping Plover . . . . . u u u  
 Killdeer . . . . . c a r  
 Mountain Plover . . . . . u u u  
 Lesser Golden Plover . . . . . r r  
 Black-bellied Plover . . . . . o o  
 Ruddy Turnstone . . . . . r r  
 Common Snipe . . . . . c c c  
 Long-billed Curlew . . . . . u u u  
 Whimbrel . . . . . r r  
 Upland Sandpiper . . . . . u o u  
 Spotted Sandpiper . . . . . c c c  
 Solitary Sandpiper . . . . . c c c  
 Willet . . . . . c u c  
 Greater Yellowlegs . . . . . c c c  
 Lesser Yellowlegs . . . . . c c c  
 Pectoral Sandpiper . . . . . u r  
 White-rumped Sandpiper . . . . . r  
 Baird's Sandpiper . . . . . c u c  
 Least Sandpiper . . . . . c u c  
 Dunlin . . . . . r r  
 Long-billed Dowitcher . . . . . c c  
 Stilt Sandpiper . . . . . r r  
 Semipalmated Sandpiper . . . . . u r u  
 Western Sandpiper . . . . . u u u  
 Buff-breasted Sandpiper . . . . . r r  
 Marbled Godwit . . . . . u u u  
 Sanderling . . . . . u u  
 American Avocet . . . . . u u u  
 Wilson's Phalarope . . . . . c c c  
 Red-necked Phalarope . . . . . u u  
 Glaucous Gull . . . . . u  
 Herring Gull . . . . . u r u c  
 California Gull . . . . . c a c o  
 Ring-billed Gull . . . . . c a c  
 Franklin's Gull . . . . . u c u  
 Bonaparte's Gull . . . . . u u o  
 Forster's Tern . . . . . c c  
 Common Tern . . . . . c c  
 Caspian Tern . . . . . u u  
 Black Tern . . . . . u u u

**Doves, Pigeons:**  
 Rock Dove . . . . . o o o o

S S F W

S S F W

Mourning Dove . . . . . a a a

**Cuckoos:**

Black-billed Cuckoo . . . . . u u

**Owls:**

Great Horned Owl . . . . . c c c c  
 Snowy Owl . . . . . o o  
 Burrowing Owl . . . . . c c c  
 Long-eared Owl . . . . . c c c c  
 Short-eared Owl . . . . . c c c c  
 Northern Saw-whet Owl . . . . . u u u u

**Goatsuckers:**

Poor-Will . . . . . c a c  
 Common Nighthawk . . . . . u a a

**Swifts, Hummingbirds:**

Chimney Swift . . . . . o u  
 White-throated Swift . . . . . u

**Kingfishers:**

Belted Kingfisher . . . . . c o c

**Woodpeckers:**

Northern Flicker . . . . . c c c u  
 Red-headed Woodpecker . . . . . u u u  
 Yellow-bellied Sapsucker . . . . . r  
 Hairy Woodpecker . . . . . c c c u  
 Downy Woodpecker . . . . . c c c c

**Flycatchers:**

Eastern Kingbird . . . . . c a  
 Western Kingbird . . . . . c c  
 Say's Phoebe . . . . . c c c  
 Willow Flycatcher . . . . . o o  
 Least Flycatcher . . . . . c c  
 Dusky Flycatcher . . . . . o  
 Western Flycatcher . . . . . o o  
 Western Wood-Pewee . . . . . c c u

**Larks:**

Horned Lark . . . . . a a a u

**Swallows:**

Violet-green Swallow . . . . . u u u  
 Tree Swallow . . . . . c c c  
 Bank Swallow . . . . . c a c  
 Northern Rough-winged Swallow . . . . . u u u  
 Barn Swallow . . . . . c c c  
 Cliff Swallow . . . . . c c c

**Jays, Magpies, Crows:**

Blue Jay . . . . . o o o o  
 Pinyon Jay . . . . . c a c  
 Black-billed Magpie . . . . . c a c a  
 Common Raven . . . . . r o  
 American Crow . . . . . c c c  
 Clark's Nutcracker . . . . . r r

**Chickadees:**

Black-capped Chickadee . . . . . c c c c  
 Mountain Chickadee . . . . . o o u o