

Patuxent Research Refuge
10901 Scarlet Tanager Loop
Laurel, MD 20708-4027
301/497 5580
301/497 5765 FAX
301/497 5779 TDD
<http://patuxent.fws.gov>

Federal Relay Service
for the deaf and hard-of-hearing
1 800/877 8339

U.S. Fish and Wildlife Service
1 800/344 WILD
<http://www.fws.gov>

October 2000



I 49.44/2:P 27/2

PAM FILE

UNIVERSITY OF NEW MEXICO-GENERAL LIBRARY



A14420 076197

Patuxent

Research Refuge

Amphibians and Reptiles

ZIMMERMAN LIBRARY
UNIVERSITY OF NEW MEXICO

FEB 08 2001

U.S. Regional Depository



This goose, designed by J.N. "Ding" Darling, has become a symbol of the National Wildlife Refuge System.

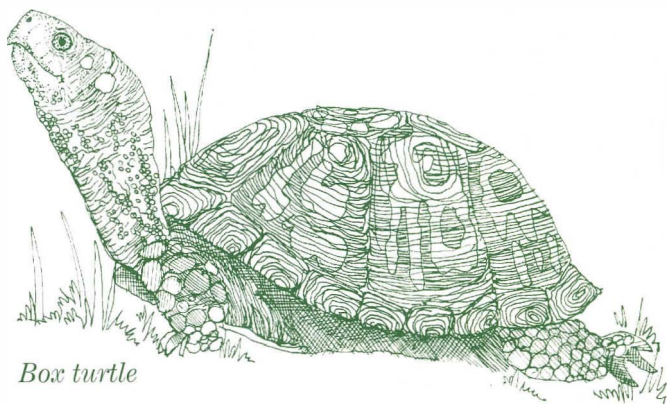
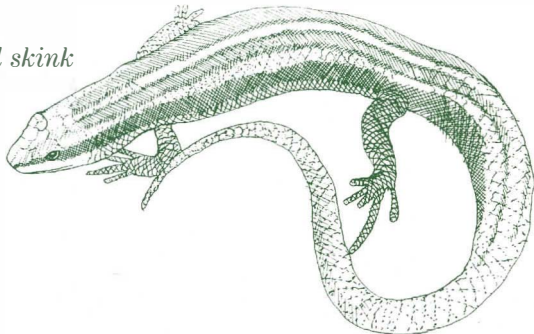
The following species are known to occur on Patuxent Research Refuge. Those species marked with a bullet (•), are most frequently encountered on the refuge.

Please do NOT harass, harm, or collect any species.

Frogs

- ___ Eastern spadefoot toad, *Scaphiopus h. holbrookii*
- ___ • American toad, *Bufo a. americanus*
- ___ • Fowler's toad, *Bufo woodhousei fowleri*
- ___ • Northern cricket frog, *Acris c. crepitans*
- ___ Gray treefrog, *Hyla versicolor*
- ___ • Spring peeper, *Pseudacris crucifer*
- ___ Upland chorus frog, *Pseudacris triseriata feriarum*
- ___ • Bullfrog, *Rana catesbeiana*
- ___ • Green frog, *Rana clamitans melanota*
- ___ • Pickerel frog, *Rana palustris*
- ___ Wood frog, *Rana sylvatica*
- ___ • Southern leopard frog, *Rana utricularia*

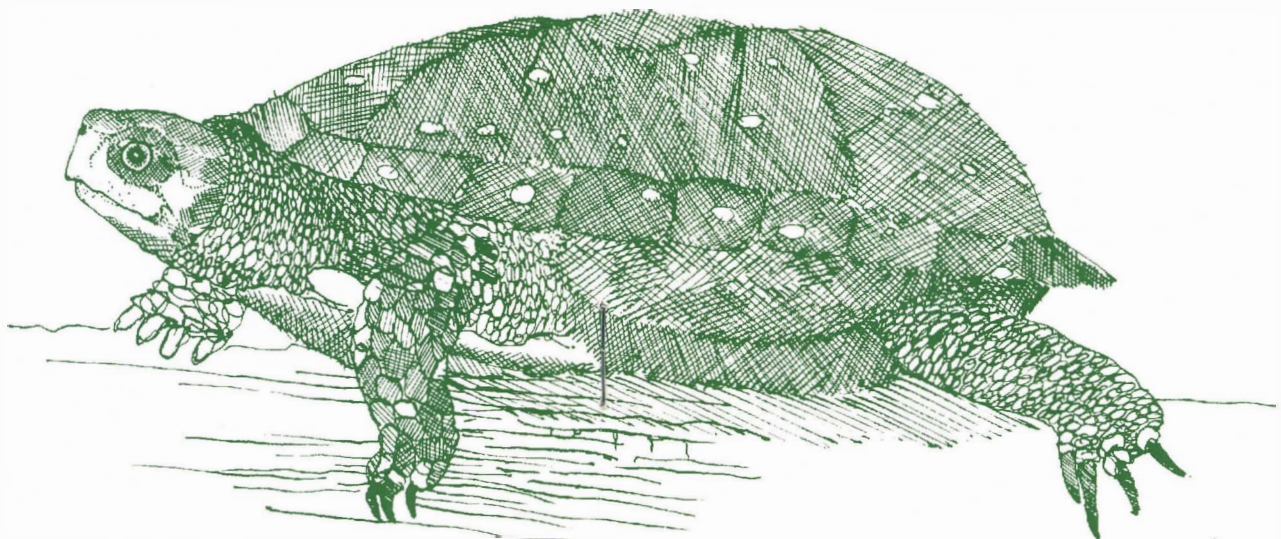
Five-lined skink



Box turtle

Salamanders

- ___ Spotted salamander, *Ambystoma maculatum*
- ___ Marbled salamander, *Ambystoma opacum*
- ___ Northern dusky salamander, *Desmognathus f. fuscus*
- ___ Northern two-lined salamander, *Eurycea b. bislineata*
- ___ Four-toed salamander, *Hemidactylium scutatum*
- ___ Eastern red-spotted newt, *Notophthalmus v. viridescens*
- ___ • Red-backed salamander, *Plethodon cinereus*
- ___ Eastern mud salamander, *Pseudotriton m. montanus*
- ___ Northern red salamander, *Pseudotriton r. ruber*



Spotted turtle

Turtles

- Common snapping turtle,
Chelydra s. serpentina
- Eastern mud turtle,
Kinosternon s. subrubrum
- Common musk turtle
(stinkpot), *Sternotherus
odoratus*
- Eastern painted turtle,
Chrysemys p. picta
- Spotted turtle, *Clemmys g.
guttata*
- Red-bellied turtle, *Pseudemys
rubriventris*
- Eastern box turtle, *Terrapene
carolina*
- Red-eared slider (introduced,
Trachemys scripta elegans)

Lizards

- Six-lined racerunner,
Cnemidophorus s. sexlineatus
- Five-lined skink, *Eumeces
faciatus*
- Broadhead skink, *Eumeces
laticeps*
- Ground skink, *Scincella
lateralis*
- Northern fence lizard,
*Sceloporus undulatus
hyacinthinus*



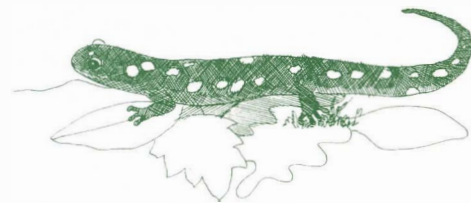
Eastern garter snake

Snakes

- Eastern worm snake,
Carphophis amoenus
- Northern black racer, *Coluber constrictor*
- Northern ringneck snake,
Diadophis punctatus edwardsi
- Black rat snake, *Elaphe obsoleta*
- Eastern hognose snake,
Heterodon platirhinos
- Eastern kingsnake,
Lampropeltis g. getula
- Eastern milk snake,
Lampropeltis t. triangulum
- Northern water snake,
Nerodia s. sipedon
- Rough green snake,
Opheodryx aestivus
- Queen snake, *Regina septemvittata*
- Northern brown snake,
Storeria d. dekayi
- Eastern ribbon snake,
Thamnophis s. sauritus
- Eastern garter snake,
Thamnophis s. sirtalis
- Smooth earth snake, *Virginia v. valeriae*



Spring peeper



Spotted salamander

The following amphibians and reptiles may occur on Patuxent Research Refuge, although there are no recent sightings (sightings after 1988). Their presence needs to be verified. If you think you have encountered one of these species, please take a picture or write down a detailed description and report it to Refuge staff.

Salamanders

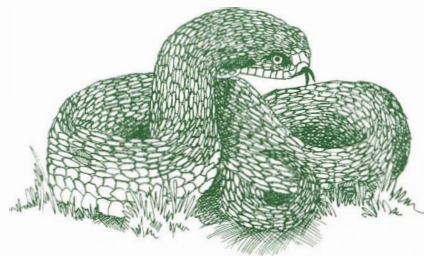
- Long-tailed salamander,
Eurycea l. longicauda

Frogs

- Green treefrog, *Hyla cinerea*

Snakes

- Mole kingsnake, *Lampropeltis calligaster rhombomaculata*
- Northern red-bellied snake,
Storeria o. occipitomaculata
- Northern copperhead
(venomous), *Agkistrodon contortrix mokasen*



Eastern hognose snake