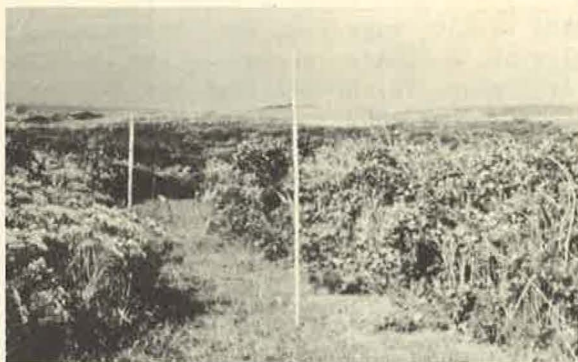


In employing this method the possibility of having to cut or break the net is reduced to a minimum. The faster you remove birds from nets the less likely you are to find a bird "in shock", as prolonged handling can be disastrous. EBBA's secretary, John Given, uses this method and endorses it one hundred percent.

259 Grove St., Ramsey, N. J.

★ ★ ★



A Typical Net-Setting at Block Island
(See Nov.-Dec. 1959 EBBA NEWS)

FOR SALE
To EBBA Members Only

MULTI-CELL GATHERING CAGES

Light weight, wooden, beautifully finished with spar varnish. These boxes are made to order, with costs of materials and small labor charges by hobbyist. Prices are as follows:

8 cell . . .	\$10.00
10 cell . . .	12.50
12 cell . . .	15.00
15 cell . . .	18.75
16 cell . . .	20.00

May be ordered through Treasurer. Will be shipped collect.