

SEPTEMBER – OCTOBER - NOVEMBER
1940

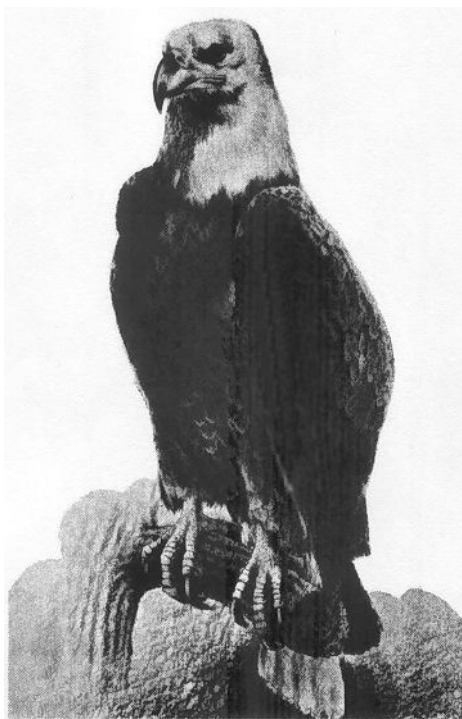
BIRD CALENDAR

of the

Cleveland Bird Club

36th year

No.4



Founded by Francis H. Herrick in 1905 for the
recording of Bird Activities

Edited by John W. Aldrich, The Cleveland Museum
of Natural History
January – 1941

CLEVELAND, OHIO



REGION INCLUDED

The northern tier of Ohio counties from the Marblehead Peninsula east to the Pennsylvania line including: Ottawa (eastern), Erie, Lorain (northern), Cuyahoga, Summit (northern), Lake, Geauga, Portage (northern) and Ashtabula Counties.

CONTRIBUTORS

Albert H. Bohn
B. P. Bole, Jr.
A. B. Fuller
Malcolm Jollie
Lynds Jones
Richard Klein
Rudolph Kula

J. O. McQuown
Margarette E. Morse
Donald L. Newman
Thomas Sandera
Margaret H. Sherwin
Marion Skaggs
Merit B. Skaggs

Arthur B. Williams

The editor was greatly aided in the compilation of data for this issue by Marjorie Ramisch, Isabel Hellwig, Edith Dobbins and Ralph A. O'Reilley, Jr.

NOREWORTHY RECORDS

Holboell Grebe.- Lynds Jones saw 1 at Vermilion, November 13.

Blue Goose.- Margaret Sherwin saw 4 at Waite Hill, Willoughby, October 27.

Golden Plover.- Margarette E. Morse saw 1 at Fairport Harbor, September 21.

King Eider.- R. K. Pinaire collected 1 at Ashtabula Harbor, November 26. Head preserved in Cleveland Museum of Natural History.

Knot.- A single bird (probably the same individual) was seen at Fairport Harbor on September 20 by A. B. Fuller, on September 21 by Margarette E. Morse, and on September 22 by Merit Skaggs and Edith Dobbins.

White-rumped Sandpiper.- Merit Skaggs saw 1 at Fairport Harbor October 20; and 2 at Pymatuning Reservoir, October 27.

Wilson Phalarope.- Richard Klein saw 5 at Pymatuning Reservoir, October 27.

Franklin Gull.- Albert Bohn saw one at Gordon Park, Cleveland, September 14. Another, or possibly the same bird was seen by Don Eckelberry and Donald Newman at White City, Cleveland, October 20, and by Merit Skaggs, October 25. Albert Bohn saw one again at Gordon Park on November 3.

Long-eared Owl.- Tom Sandera saw 1 at Northfield, November 27.

Saw-whet Owl.- Malcolm Jollie reported 1 captured alive at Huntington Park, Bay Village, November 9 by Charles Simpson.

Kirtland Warbler.- J. O. McQuown saw 1 in Rocky River Reservation, September 8.

In addition to these Autumn records, three very unusual records for earlier in the year have just come to the attention of the editor.

American Egret.- H. W. Baker saw 1 at Clague Ice Pond, Bay Village, on May 7, 8 and 9, 1940. Spring occurrences of this species are very unusual.

Barrow Golden-eye.- H. W. Baker saw 1 at Clague Park Pond, Bay Village, March 30 and 31, 1940.

This is apparently the fifth record for the state of Ohio.

Chukar Partridge.- Elizabeth F. Roe described a bird seen at Mentor Headlands, Lake County, during the summer of 1940, that answered the description of this species perfectly, even to bright red bill and legs. Chukars have been liberated in various parts of the state, but this is the first record for the Cleveland region that has come to the attention of the Bird Calendar.

SUMMARY OF WEATHER CONDITIONS
Taken from Cleveland Weather Bureau Reports

Month	Mean Temp.	Normal Temp.	Total Precip.	Normal Precip.	% of Possible Sunshine	Normal Sunshine	Relative Humidity
Sept.	63.0°	63.9°	1.83"	3.33"	65%	62%	*74.0
Oct.	54.0	53.6	1.39	2.78 (snow 0.2)	55	52	*71
Nov.	41.8	40.9	2.19 (snow 3.9)	2.64 (snow 3.9)	25	31	*72
Departure from normal	+ .4		-3.34 (snow -0.2)		normal		

* Based on an average of 4 daily readings taken at 1:30 A.M., 7:30 A. M., 1:30 P. M. and 7:30 P.M.

AUTUMN MIGRATION TABLE - 1940

Species	1st 1940	Average 1st	Maximum 1940	Last 1940	Average Last
Common Loon	Oct. 13 (1)		Oct. 27 (9)	Nov. 30 (1)	
Holboell Grebe	Nov. 13 (1)		Nov. 13 (1)	Nov. 13 (1)	
Horned Grebe	Nov. 10 (10)		Nov. 10 (10)	Nov. 10(10)	/
Pied-billed Grebe	Breeds		Oct. 27 (10)	Oct. 27 (10)	Nov. 10
Double-crested Cormorant	Sept. 29 (2)		Oct. 27 (5)	Oct. 27 (5)	
Great Blue Heron	Breeds		Sept. 15 (37)	Dec. 22 (2)	Oct. 26
Green Heron	Breeds		Sept. 15 (12)	Sept. 22 (1)	Sept. 17
Black-crowned Night Heron	Breeds		Sept. 8 (3)	Sept. 15 (1)	Sept. 29
American Bittern	Breeds		Oct. 6 & 4 (1)	Oct. 24 (1)	Oct. 10
Whistling Swan	Nov. 15 (14)		Nov. 16 (149)	Dec. 3 (7)	/
Canada Goose	Oct. 27 (66)		Nov. 16 (70)	Nov.15 (70)	Nov. 27
Blue Goose	Oct. 27 (4)		Oct. 27 (4)	Oct. 27 (4)	
Mallard	Breeds		Oct. 27 (250)	Winters	
Black Duck	Breeds		Nov.10(1200)	Winters	
Gadwall	Nov. 10 (4)		Nov. 10 (4)	Nov. 24 (2)	/
Baldpate	Aug. 10 (3)	Sept. 17	Oct.27(1500)	Nov. 24 (2)	/Nov.27
Pintail	Sept. 17 (2)	Sept. 29	Oct. 30 (17)	Nov. 27 (8)	/Nov. 5
Green-winged Teal	Oct. 21 (7)		Nov. 7 (16)	Nov. 10 (1)	/Oct.31
Blue-winged Teal	Breeds		Sept. 15 (6)	Nov. 14 (4)	Oct. 8
Shoveller	Nov. 3 (1)	*Sept. 4	Nov. 17 (3)	Nov. 17 (3)	/Nov. 3
Wood Duck	Breeds		Sept. 15 (10)	Oct. 31 (8)	Oct. 28
Ring-necked Duck	Oct. 21 (3)		Nov. 23 (5)	Nov. 23 (5)	Nov. 11
Canvasback	Nov. 2 (1)		Nov. 2 (1)	Nov. 2 (1)	
Lesser Scaup Duck	Nov. 2 (8)	*Oct. 21	Nov. 10 (300)	Winters	
American Golden-eye	Nov. 2 (3)	Oct. 23	Nov. 10 (45)	Winters	
Buffle-head	Nov. 6 (5)		Nov. 6 (5)	Nov. 10 (3)	
King Eider	Nov. 26 (1)		Nov. 26 (1)	Nov. 26 (1)	
Ruddy Duck	Sept. 15 (1)		Nov. 2, 6 (2)	Winters	
Hooded Merganser	Nov. 10 (14)		Nov. 10 (14)	Nov.27 (10)	/Dec. 5
American Merganser	Nov. 23 (1)	Nov. 19	Nov. 23 (1)	Winters	
Red-breasted Merganser	Nov. 3 (4)	Nov. 13	Nov. 22 (30)	Winters	

* Breeds rarely
/ Winters rarely

AUTUMN MIGRATION TABLE - 1940

Species	1st 1940	Average 1st	Maximum 1940	Last 1940	Average Last
Turkey Vulture	Breeds		Sept. 8 (30)	Oct. 13 (8)	Oct. 14
Sharp-shinned Hawk	Breeds		Sept. 22, Nov. 10 (1)	Winters	
Cooper Hawk	Breeds		Nov. 27 (2)	Winters	
Red-tailed Hawk	Breeds		Nov. 23 (3)	Winters	
Red-shouldered Hawk	Breeds		Nov. 24, 27 (1)	Winters	
Rough-legged Hawk	Oct. 26 (1)	Nov. 9	Oct. 26 (1)	Winters	
Bald Eagle	Breeds		Oct. 27 (10)	Winters	
Marsh Hawk	Breeds		Oct. 26, Nov. 30 (4)	Winters	
Sparrow Hawk	Breeds		Sept. 15 (4)	Winters	
Ruffed Grouse	Breeds		Oct. 13 (2)	Winters	
Bob White	Breeds		Nov. 27, 30 (20)	Winters	
Ring-necked Pheasant	Breeds		Oct. 30 (7)	Winters	
Virginia Rail	Breeds		Aug. 16 (1)	Aug. 16 (1)	
Florida Gallinule	Breeds		Sept. 15 (50)	Sept. 15 (50)	Sept. 30
Coot	Breeds		Oct. 27 (1800)	Nov. 10 (1000)	/ Nov. 1
Semipalmated Plover	July 25 (3)	Aug. 21	Sept. 15 (8)	Oct. 26 (1)	Oct. 6
Killdeer	Breeds		Oct. 13 (53)	Nov. 24 (6)	Nov. 10
Golden Plover	Sept. 21 (1)		Sept. 21 (1)	Sept. 21 (1)	
Black-bellied Plover	Sept. 20 (4)	Sept. 5	Nov. 11 (10)	Nov. 15 (1)	Oct. 21
Ruddy Turnstone	Aug. 13 (1)		Sept. 17, 20 (2)	Oct. 20 (1)	Sept. 20
Woodcock	Breeds		Oct. 15 (1)	Oct. 13 (1)	Nov. 14
Wilson Snipe	July 31 (8)	*Sept. 8	July 31 (8)	Oct. 13 (1)	Oct. 27
Upland Plover	Breeds		July 28 (5)	July 28 (5)	
Spotted Sandpiper	Breeds		July 25 (12)	Sept. 8 (1)	Sept. 21
Solitary Sandpiper	July 28 (2)		July 28, Sept. 8, 15 (2)	Sept. 22 (1)	Sept. 26
Greater Yellowlegs	Sept. 2 (2)	Aug. 28	Sept. 15 (6)	Nov. 10 (1)	Oct. 26
Lesser Yellowlegs	July 13 (1)	Aug. 22	Oct. 13 (6)	Oct. 13 (6)	Sept. 21
Knot Pectoral Sandpiper	Sept. 20 (1)		Sept. 20, 21, 22 (1)	Sept. 22 (1)	
	July 25 (3)	Sept. 2	Oct. 27 (45)	Nov. 11	Oct. 19

* Breeds rarely
/ Winters rarely

AUTUMN MIGRATION TABLE – 1940

Species	1st 1940	Average 1st	Maximum 1940	Last 1940	Average Last
White-rumped Sandpiper	Oct. 20 (1)		Oct. 27 (4)	Oct. 27 (4)	
Baird Sandpiper	Aug. 16 (1)		Sept. 15 (2)	Sept. 15 (2)	
Least Sandpiper	July 13 (3)	Aug. 17	Aug. 16 (40)	Sept. 15 (6)	Sept. 30
Red-backed Sandpiper	Oct. 20 (2)	Oct. 3	Oct. 27 (67)	Nov. 11 (2)	
Dowitcher	Aug. 18 (1)		Sept. 2 (4)	Oct. 13 (2)	
Stilt Sandpiper	Aug. 18 (6)		Sept. 2 (14)	Sept. 2 (14)	
Semipalmated Sandpiper	July 25 (3)	Aug. 21	Sept. 15 (30)	Oct. 13 (1)	Oct. 2
Sanderling	July 16 (4)	Aug. 23	Sept. 20 (50)	Oct. 20 (7)	Oct. 12
Wilson Phalarope	Oct. 27 (5)		Oct. 27 (5)	Oct. 27 (5)	
Herring Gull	July 16 (3)		Sept. 20 (100)	Winters	
Ring-billed Gull	Aug. 14 (200)		Aug. 14 (200)	Winters	
Bonaparte Gull	July 31 (2)		Aug. 26 (500)	Winters	
Franklin Gull	Sept. 14 (1)		Sept. 14 - Nov. 3 (1)	Nov. 3 (1)	
Common Tern	Aug. 11 (9)	*	Sept. 20 (100)	Oct. 6 (20)	
Caspian Tern	July 13 (2)		July 13, Sept. 2 (2)	Sept. 22 (1)	
Black Tern	Breeds		Aug. 18 (4)	Aug. 18 (4)	
Mourning Dove	Breeds		Sept. 15 (68)	Nov. 10 (6)	/
Screech Owl	Breeds		Nov. 23 (2)	Winters	
Horned Owl	Breeds		Oct. 26 (1)	Winters	
Barred Owl	Breeds		Nov. 9 (1)	Winters	
Long-eared Owl	Nov. 27 (1)	*	Nov. 27 (1)	Winters	
Short-eared Owl	Sept. 21 (1)	*	Sept. 21 (1)	Winters	
Saw-whet Owl	Nov. 23 (1)		Nov. 23 (1)	Winters	
Nighthawk	Breeds		Aug. 29 (118)	Sept. 4 (10)	Sept. 18
Chimney Swift	Breeds		Sept. 8 (10)	Sept. 15 (3)	Oct. 6
Ruby-throated Hummingbird	Breeds		Sept. 8 (2)	Sept. 8 (2)	Sept. 23
Kingfisher	Breeds		Sept. 22 (8)	Oct. 27 (1)	/Nov. 4
Flicker	Breeds		Sept. 14, 22 (15)	Nov. 30 (1)	/Nov. 8
Pileated Woodpecker	Breeds		Nov. 9 (1)	Winters	
Red-bellied Woodpecker	Breeds		Nov. 14 (1)	Winters	
Red-headed Woodpecker	Breeds		Sept. 15 (10)	Nov. 21 (2)	/Oct. 31
Hairy Woodpecker	Breeds		Nov. 23 (7)	Winters	
Downy Woodpecker	Breeds		Nov. 23 (14)	Winters	
Kingbird	Breeds		Sept. 2 (2)	Sept. 2 (2)	Sept. 16
Crested Flycatcher	Breeds		Sept. 1 (2)	Sept. 6 (1)	Sept. 9

* Breeds rarely
/ Winters rarely

AUTUMN MIGRATION TABLE - 1940

Species	1st 1940	Average 1st	Maximum 1940	Last 1940	Average Last
Phoebe	Breeds		Sept. 15 (1)	Sept. 15 (1)	Oct. 18
Alder Flycatcher	Breeds		Aug. 25 (4)	Aug. 31 (1)	Sept. 26
Acadian Flycatcher	Breeds		Sept. 2 (3)	Sept. 6 (1)	Sept. 17
Wood Pewee	Breeds		Sept. 18 (6)	Sept. 18 (6)	Sept. 22
Horned Lark	Breeds		Oct. 27 (6)	Winters	
Bank Swallow	Breeds		July 16 (1500)	Aug. 20 (1)	
Rough-winged Swallow	Breeds		Aug. 23 (1)	Aug. 23 (1)	
Barn Swallow	Breeds		Aug. 19 (100)	Sept. 15 (3)	Sept. 15
Purple Martin	Breeds		Aug. 29 (275)	Aug. 31 (1)	Sept. 11
Blue Jay	Breeds		Sept. 22 (26)	Winters	
Crow	Breeds		Oct. 13 (18)	Winters	
Black-capped Chickadee	Breeds		No. 21 (20)	Winters	
Tufted Titmouse	Breeds		Nov. 23 (12)	Winters	
White-breasted Nuthatch	Breeds		Nov. 23 (17)	Winters	/
Red-breasted Nuthatch	Oct. 30 (2)	Sept. 18	Oct. 30 (2)	Winters	
Brown Creeper	Sept. 23 (1)	Oct. 1	Sept. 23 - Nov. 10 (1)	Winters	
House Wren	Breeds		July 20 (6)	Oct. 13 (1)	Oct. 2
Winter Wren	Sept. 29 (1)	Sept. 26 (1)	Sept. 29, Oct. 20 (1)	Oct. 20 (1)	/
Catbird	Breeds	*	Sept. 15 (31)	Oct. 15 (1)	Oct. 6
Brown Thrasher	Breeds		Sept. 2, Oct. 4 (1)	Oct. 4 (1)	Sept. 29
Robin	Breeds		Sept. 15 (153)	Nov. 10 (40)	/
Wood Thrush	Breeds		Sept. 1 (2)	Sept. 29 (1)	Oct. 7
Hermit Thrush	Sept. 14 (7)	Sept. 27	Sept. 14, Oct. 13 (7)	Oct. 27 (1)	Oct. 28
Olive-backed Thrush	Sept. 6 (3)	Sept. 11	Sept. 15 (13)	Oct. 20 (1)	Oct. 14
Gray-cheeked Thrush	Sept. 22 (3)	Sept. 15	Sept. 27 (4)	Oct. 13 (1)	Oct. 1
Bluebird	Breeds		Aug. 18 (15)	Oct. 27 (3)	/Oct.31
Golden-crowned Kinglet	Sept. 29 (2)	Sept. 30	Oct. 6 (17)	Nov. 17 (1)	/
Ruby-crowned Kinglet	Sept. 29 (1)	Sept. 25	Oct. 6 (24)	Oct. 13 (2)	Nov. 1
Pipit	Oct. 20 (6)		Nov. 13 (100)	Nov.13 (100)	
Cedar Waxwing	Breeds		Sept. 15 (52)	Winters	
Starling	Breeds		Oct. 27 (580)	Winters	
White-eyed Vireo	Sept. 22 (1)		Sept. 22 (1)	Sept. 22 (1)	
Yellow-throated Vireo	Breeds		Sept. 8 (2)	Sept. 8 (2)	Sept. 22
Blue-headed Vireo	Sept. 2 (2)	Sept. 20	Sept. 2 (2)	Sept. 22 (1)	Oct. 8
Red-eyed Vireo	Breeds		Sept. 14 (15)	Sept. 22 (1)	Oct. 2
Philadelphia Vireo	Sept. 1 (1)	Sept. 13	Sept. 2 (2)	Sept. 8 (1)	Oct. 6
Warbling Vireo	Breeds		Sept. 1 (2)	Sept. 29 (1)	Sept. 25

* Breeds rarely
/ Winters rarely

AUTUMN MIGRATION TABLE - 1940

Species	1st 1940	Average 1st	Maximum 1940	Last 1940	Average Last
Black & White Warbler	Aug. 25 (2)	Aug. 24	Aug. 25 (2)	Sept. 22 (1)	Sept. 29
Blue-winged Warbler	Breeds		Sept. 18 (3)	Sept. 18 (3)	
Tennessee Warbler	Sept. 8 (8)	Sept. 4	Sept. 8 (8)	Sept. 15 (2)	Oct. 3
Orange-crowned Warbler	Sept. 15 (3)		Sept. 15 (3)	Sept. 15 (3)	
Nashville Warbler	Aug. 8 (1)	Sept. 15	Sept. 15 (8)	Sept. 15 (8)	Oct. 9
Yellow Warbler	Breeds		Sept. 8 (2)	Sept. 8 (2)	Aug. 30
Magnolia Warbler	Sept. 2 (2)	*Sept. 5	Sept. 22 (2)	Oct. 13 (1)	Oct. 11
Cape May Warbler	Sept. 8 (1)	Sept. 11	Sept. 8 (1)	Sept. 8 (1)	Oct. 5
Black-throated Warbler	Sept. 8 (1)	Sept. 8	Sept. 8 - Oct. 6 (1)	Oct. 6 (1)	Oct. 5
Myrtle Warbler	Sept. 15 (2)	Sept. 20	Oct. 13 (11)	Oct. 24 (10)	Oct. 29
Black-throated Green Warbler	Sept. 8 (1)	*	Sept. 15, 29 (3)	Sept. 29 (3)	Oct. 14
Blackburnian Warbler	Sept. 14 (2)	Aug. 31	Sept. 14, 15 (2)	Sept. 15 (2)	Oct. 3
Chestnut-sided Warbler	Sept. 1 (4)	*Sept. 2	Sept. 1 (4)	Sept. 1 (4)	Sept. 21
Bay-breasted Warbler	Sept. 8 (8)	Sept. 2	Sept. 8 (8)	Sept. 8 (8)	Oct. 8
Black-poll Warbler	Aug. 31 (2)	Sept. 5	Aug. 31 (2)	Aug. 31 (2)	Oct. 11
Kirtland Warbler	Sept. 8 (1)		Sept. 8 (1)	Sept. 8 (1)	
Palm Warbler	Oct. 12 (1)	Sept. 21	Oct. 13 (6)	Oct. 13 (6)	Oct. 14
Ovenbird	Breeds		Sept. 2 (5)	Sept. 22 (1)	Sept. 30
Grinnell Waterthrush	Sept. 8	*	Sept. 8, 22 (1)	Sept. 22 (1)	Sept. 10
Louisiana Waterthrush	Breeds		Aug. 26 (1)	Aug. 26 (1)	Sept. 11
Connecticut Warbler	Sept. 11 (1)		Sept. 11 (1)	Sept. 11 (1)	
Mourning Warbler	Aug. 25 (9)		Aug. 25 (9)	Aug. 26 (1)	
Yellowthroat	Breeds		Sept. 8 (6)	Sept. 22 (2)	Oct. 8
Yellow-breasted Chat	Breeds		Sept. 29 (1)	Sept. 29 (1)	
Hooded Warbler	Breeds		Sept. 22 (1)	Sept. 22 (1)	Sept. 26
Wilson Warbler	Aug. 31 (2)	Sept. 4	Sept. 14 (3)	Sept. 22 (1)	Sept. 22
Canada Warbler	Aug. 20 (1)	Aug. 28	Sept. 1 (2)	Sept. 2 (1)	Sept. 13
Redstart	Breeds		Sept. 8 (7)	Sept. 22 (2)	Oct. 4
English Sparrow	Breeds		Nov. 3 (90)	Winters	
Bobolink	Breeds		Sept. 2 (20)	Sept. 15 (2)	Sept. 19
Meadowlark	Breeds		Oct. 24 (35)	Nov. 21 (6)	Nov. 4
Red-winged Blackbird	Breeds		July 31, Aug. 18 (500)	Nov. 11 (100)	Nov. 9
Orchard Oriole	Breeds		Aug. 4 (1)	Aug. 4 (1)	
Baltimore Oriole	Breeds		Aug. 18, 26 (2)	Aug. 26 (2)	Aug. 28

* Breeds rarely
/ Winters rarely

AUTUMN MIGRATION TABLE - 1940

Species	1st 1940	Average 1st	Maximum 1940	Last 1940	Average Last
Rusty Blackbird	Oct. 27 (32)	Oct. 2	Oct. 27 (32)	Nov. 10 (20)	Oct. 31
Bronzed Grackle	Breeds		July 31 (50)	Nov. 10 (7)	Nov. 6
Cowbird	Breeds		Aug. 18 (20)	Sept. 8 (1)	Oct. 17
Scarlet Tanager	Breeds		July 25 (2)	July 31 (1)	Sept. 24
Cardinal	Breeds		Nov. 27 (10)	Winters	
Rose-breasted Grosbeak	Breeds		Sept. 15 (1)	Sept. 15 (1)	Sept. 27
Indigo Bunting	Breeds		July 21 (16)	Sept. 8 (1)	Sept. 7
Purple Finch	Sept. 22	*Oct. 17	Nov. 30 (5)	Winters	
Goldfinch	Breeds		Nov. 8 (40)	Winters	
Towhee	Breeds		Sept. 2-22 (4)	May 9 (1)	/Oct. 30
Savannah Sparrow	Breeds		Sept. 15 (1)	Sept. 15 (1)	Oct. 13
Grasshopper Sparrow	Breeds		Aug. 18 (2)	Aug. 18 (2)	Sept. 26
Henslow Sparrow	Breeds		Aug. 18 (4)	Aug. 31 (1)	Sept. 6
Vesper Sparrow	Breeds		Sept. 2, 15 (2)	Sept. 15 (2)	Oct. 11
Junco	Sept. 22 (3)	*Sept. 25	Oct. 27 (42)	Winters	
Lark Sparrow	Oct. 13 (3)		Oct. 13 (3)	Oct. 13 (3)	
Chipping Sparrow	Breeds		July 29 (7)	Oct. 29 (1)	Oct. 9
Tree Sparrow	Oct. 24 (10)	Oct. 15	Nov. 21 (63)	Winters	
Field Sparrow	Breeds		Sept. 2 (8)	Nov. 21 (1)	Oct. 23
White-throated Sparrow	Sept. 22 (24)	Sept. 18	Sept. 29 (47)	Nov. 7 (25)	Nov. 3
Fox Sparrow	Nov. 7 (8)	Oct. 9	Nov. 7 (8)	Nov. 7 (8)	Nov. 7
Lincoln Sparrow	Sept. 14 (1)	Sept. 15	Sept. 14, Oct. 3 (1)	Oct. 3 (1)	Oct. 12
Swamp Sparrow	Breeds		Nov. 30 (1)	Nov. 30 (1)	/Oct. 24
Song Sparrow	Breeds		Nov. 30 (12)	Winters	
Snow Bunting	Oct. 20 (19)	Nov. 17	Nov. 2 (100)	Winters	

* Breeds rarely
/ Winters rarely

Species conspicuously lacking in records during the autumn months are: least bittern, Virginia rail, sora, upland plover, yellow-billed cuckoo, black-billed cuckoo, barn owl, whip-poor-will, yellow-bellied sapsucker, yellow-bellied flycatcher, alder flycatcher, least flycatcher, tree swallow, bank swallow, rough-winged swallow, long-billed marsh wren, short-billed marsh wren, blue-gray gnatcatcher, migrant shrike, Parula warbler, cerulean warbler, scarlet tanager, grasshopper sparrow, and white-crowned sparrow. Again the lack of records of such birds as rails, gallinules, herons and marsh wrens indicates a definite lack of attention on the part of our observers to marshy habitats. In the case of such birds as the swallows and cerulean warbler, that normally leave early, the cold spell in late August may have caused even the stragglers to depart before the first of September. However, no theory can be offered to explain the absence of such ordinarily common autumn migrants as the yellow-bellied sapsucker, and white-crowned sparrow.

Annual gathering of Pymatuning Naturalists.- On October 5th and 6th the Pymatuning Naturalists gathered at Erie, Pennsylvania, to explore Presque Isle and the adjoining mud flats. Miss Vera Carrothers, Miss Marjorie Ramisch and I attended this meeting and enjoyed birding with people from various places in New York, Pennsylvania and Ohio.

A fine flock of shore birds including many pectoral, red-backed and semipalmated sandpipers, sanderlings, semipalmated plovers and killdeer were seen. Among these was one golden plover. This was our second sight of the golden plover this fall, for on September 21st we had seen one at the Coast Guard Station near Fairport, Ohio in company with three black-bellied plovers and a knot. We had plenty of time to observe the golden plover and compare it with the black-bellied plovers as they shifted back and forth along the beach when we approached too near them.

On the way home from Erie we drove to Pymatuning Reservoir. There we found four dowitchers in company with greater and lesser yellowlegs, Wilson snipe and sandpipers of several species.- MARGARETTE E. MORSE

The Arboretum Swans.- No more convincing evidence of the success of the new waterfowl refuge at the Holden Arboretum could be had, than the lengthy visit during the autumn migration, of a group of whistling swans. Ordinarily these magnificent birds do not stop over in the vicinity of Cleveland, due to the scarcity of water areas with suitable concentrations of food plants. However with the construction of the 17-acre Corning Lake at the Holden Arboretum, and with supplementary artificial feeding of waterfowl there, conditions were attractive to swans this year.

Judging from all records, the height of the whistling swan migration came on November 15. On that date 19 of these birds alighted on Corning Lake. Five of these birds decided that this was a good place to rest for awhile and stayed for about two weeks, being joined by 2 others on November 25. These birds, together with numerous ducks of various species, fed on the cracked corn that was thrown into the water regularly by the Arboretum attendants.

One day toward the end of November they left Corning Lake and flew off out of sight in the direction of Lake Erie. Before nightfall, however, they were back in the "bread line" with the other Arboretum waterfowl.

On December 3, Corning Lake, that had been gradually freezing, was finally closed completely by ice, and that morning the swans were seen standing disconsolately on the frozen surface. While the authorities of the Arboretum were in a huddle trying to figure out the best thing to do in case the swans should fail to leave and decide to cast their lot with the other snow and ice-bound winter birds of Northern Ohio, the 7 whistlers settled all arguments by taking to the air and proceeding to finish their long interrupted journey to the coastal waters of the south.- JOHN W. ALDRICH

Bird Notes from Waite Hill.- The following observations were made around our small ponds at Waite Hill near Willoughby, Ohio.

October 27th - Four blue geese arrived, two immature with dark heads, and two adults with white heads. They stayed on the pond for about four weeks, never attempting to associate with our three domesticated "blues".

November 15th – Fourteen swans came down on the pond, spent the night and next day joined a great crying flock of 150 more, streaking their way South. - MARGARET H. SHERWIN