

OPPORTUNITIES FOR LOCAL AMATEURS

Bird Observer is pleased to publish the accompanying articles on the contributions of amateurs to ornithology. Below, we suggest a few activities or organizations which may be of interest to *Bird Observer* subscribers. The list is not meant to be comprehensive. We welcome additional suggestions from our readers.

- **Breeding Bird Survey (BBS)**, U.S. Fish and Wildlife Service (USFWS). The purpose of the BBS, conducted in June of every year, is to produce a long-term database valuable in estimating population trends of many species of birds that migrate across international boundaries and nest in North America. The method uses roadside sampling of prescribed twenty-five mile routes randomly selected by the USFWS and covering diverse habitats. Every one-half mile along the route, observers stop and record all birds seen and heard. The information gathered includes: (1) short-term population changes that can be correlated with specific weather incidences; (2) recovery periods following catastrophic declines; (3) normal year-to-year variations; (4) long-term population trends; and (5) invasions of exotics. For further information contact Wayne Petersen, State Coordinator, Massachusetts Audubon Society, South Great Road, Lincoln, MA 01773 (617-259-9500).

- **The North American Nest Record Card Program**, Cornell Laboratory of Ornithology. The purpose of the program is to record on cards supplied by the Laboratory the locations of nests for all species, including common ones, and to monitor the status of the young birds throughout the nesting period. Completed cards are sent to the Laboratory for collection and subsequent data analysis. For further information contact Pixie Senesac, Cornell Laboratory of Ornithology, 159 Sapsucker Woods Road, Ithaca, NY 14850 (607-254-2416).

- **Resident Bird Counts**, including the Breeding Bird Census (BBC) and the Winter Bird Population Study (WBPS). The BBC was started by the National Audubon Society in 1937 and is one of the oldest continuous programs to measure bird populations in North America. The WBPS was created as the winter analog to the BBC in 1948. The BBC and WPBS can be used to determine the species and density of birds found in habitat types throughout North America, to measure the effects of various land-use practices on bird populations, and to quantify the amount of yearly variation in densities of birds occupying various habitat types. Results of the BBC and WBPS are published in an annual supplement to the *Journal of Field Ornithology*. For count instructions and data forms contact Robert Marshall, Cornell Laboratory of Ornithology, Bird Population Studies, 159 Sapsucker Woods Road, Ithaca, NY 14850 (607-254-2441).

- **Christmas Bird Count (CBC)**, coordinated by the National Audubon Society. The CBC is held throughout North America over a three week period

in December of every year. Its purpose is to count over a twenty-four hour period the total number of birds by species seen by observers within a designated area. Many individuals serve as compilers of the CBC. Results are published annually in *American Birds*. For the Greater Boston area contact Robert H. Stymeist, 98 Boylston Street, Watertown, MA 02172 (617-926-3603).

- **Eastern Massachusetts Hawk Watch.** Each spring and fall, volunteers are needed to assist in a count of hawks from the summit of Wachusett Mountain in Princeton. EMHW also conducts coordinated weekend watches at coastal and other inland locations. Volunteers are needed to report the level of hawk activity from any site in Eastern Massachusetts or Rhode Island on any of the weekend dates. You do not need to be an expert to participate. For additional information contact Paul Roberts, 254 Arlington Street, Medford, MA 02155 (617-483-4263).

- **Take a Second Look (TASL).** TASL is a Boston Harbor monitoring program consisting of winter censuses of birds in the harbor from land vantage points from Nahant to Hingham, MA. The census is conducted at least three times per winter (November, January, and February), and results are tabulated and published in a newsletter. In addition, a summer census of herons and shorebirds in the harbor is conducted. Volunteers are also needed for a summer census of herons at Belle Isle Marsh, Revere, MA. For further information contact Soheil Zendehe at 617-861-0192, or Maury Hall at 617-268-7571.

- **Natural Heritage and Endangered Species Program,** Small Research Contracts, Massachusetts Division of Fisheries and Wildlife. The objective of the Small Research Contracts Program is to support field inventories and scientific research which will contribute to our ability to protect rare and endangered wildlife and plants and their habitats in Massachusetts. The annual grants (awarded in March of each year) range from \$100 to \$3000 per proposal. A priority topic in 1991 was to locate and estimate the size of all breeding colonies of Cliff Swallows. For further information contact the Massachusetts Division of Fisheries and Wildlife, 100 Cambridge Street, Boston, MA 02202 (617-727-9194).

- **Breeding Bird Survey,** Massachusetts Audubon Society (MAS) Sanctuaries. Each June, MAS works in conjunction with local bird clubs and other volunteers to census breeding bird populations in some of their sanctuaries throughout the state. For further information contact the MAS sanctuary in your area.

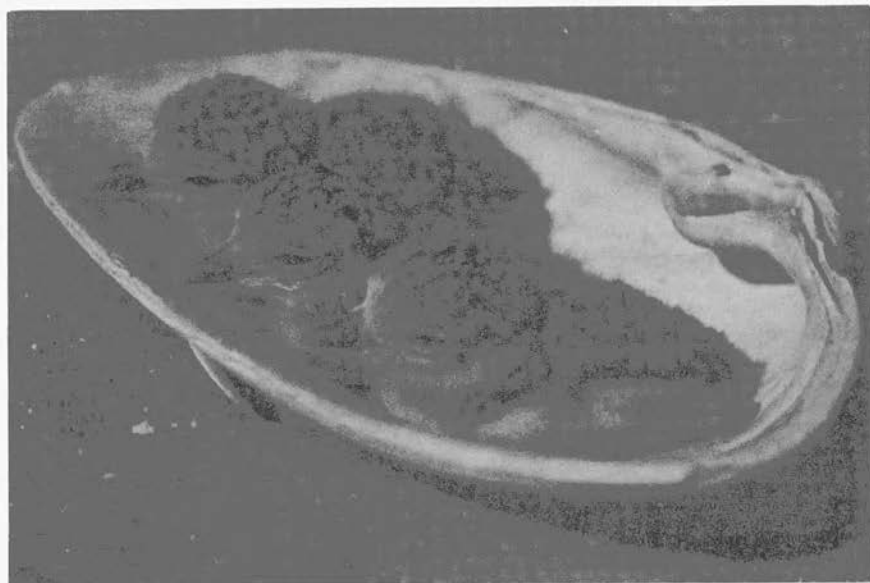
- **Coastal Waterbird Program (CWP),** Massachusetts Audubon Society. CWP's purpose is to protect nesting areas of terns, Piping Plovers, egrets, herons, and other waterbirds. CWP hires interns in the summer to oversee protection of nesting areas. In addition, volunteers help monitor nesting areas, particularly on Cape Cod and the South Shore of Massachusetts. Volunteers go to beaches on a regular schedule, looking for damage to signs or fences and for

evidence of predation. The CWP also sponsors "volunteer days" where a full day is devoted to constructing a fence or clearing vegetation in nesting areas. Nonfield volunteer activities include building Roseate Tern nesting boxes or tern decoys. For further information contact Scott Hecker, Massachusetts Audubon Society, South Great Road, Lincoln, MA 01773 (617-259-9500).

• **Volunteer Programs, Manomet Bird Observatory (MBO).** Volunteers are needed to work in MBO libraries, to help with data entry from programs such as the International Shorebird Survey, to assist with outreach activities such as the Planting for Birds program, and to assist with other programs such as the Western Hemisphere Shorebird Reserve Network. For further information contact Volunteer Coordinator, Manomet Bird Observatory, Box 936, Manomet, MA 02345 (508-224-6521).

• **Cape Cod Bird Club Lake and Pond Waterfowl Survey.** This survey censuses waterfowl on ponds and lakes on Cape Cod during the first weekend in December. Volunteers are needed to assist in the census. For further information contact Blair Nikula, 2 Gilbert Lane, Harwichport, MA 02646 (508-422-6348).

• **E. Alexander Bergstrom Research Fund, Association of Field Ornithologists (AFO).** For amateurs interested in research projects, AFO awards small Bergstrom research grants for studies pertaining to avian biology. For further information contact AFO, c/o Bruce Beehler, NHB Room 336, Smithsonian Institution, Washington, D.C. 20560.



Piping Plover chicks on a barrier beach

Photo by O. S. Pettingill, Jr.

Courtesy of MAS

• **Project FeederWatch**, Cornell Laboratory of Ornithology. The continent-wide survey of birds at backyard feeders is a joint project of the Laboratory and Long Point Bird Observatory, Port Rowan, Ontario. Participants make observations at biweekly intervals from November through March, record information on forms, and send the forms to Project FeederWatch. In return, participants receive expert information on feeding birds and analyses of the abundance and distribution of feeder birds across the continent. Contact Project FeederWatch, Cornell Laboratory of Ornithology, 159 Sapsucker Woods Road, Ithaca, NY 14850 (607-254-2473).

• **The Massachusetts Division of Fisheries and Wildlife** is looking for volunteers to report new breeding sites of rare species in Massachusetts, such as the Bald Eagle, Peregrine Falcon, Sedge Wren, Golden-winged Warbler, Mourning Warbler, Henslow's Sparrow, and others. For further information contact Brad Blodgett, State Ornithologist, Massachusetts Division of Fisheries and Wildlife, Westboro, MA 01581 (508-792-7270).

• **Cornell Library of Natural Sounds**, Cornell Laboratory of Ornithology. The library solicits any field recordings of bird songs. If you record bird songs and would be interested in providing a copy of the recording, please contact the Cornell Library of Natural Sounds. If you are interested in learning about recording bird songs, the Laboratory gives an annual Bird Sounds Recording Workshop. In 1991 the workshop will be held in the Sierra Nevada Mountains in California in June. Contact the Cornell Library of Natural Sounds, Cornell Laboratory of Ornithology, 159 Sapsucker Woods Road, Ithaca, NY 14850 (607-254-2404).

BIRD NANTUCKET

August 31 - September 28

Assist bird banding research
in woods famous
for fall migrants.

Sponsored by the
Maria Mitchell Association.

\$400/week

Write: Bird Nantucket
Box 1182
Nantucket, MA 02554.

HYDROGRAPHER CANYON IS BACK.

New England's finest
pelagic birding is possible
again this year.

SEPTEMBER 4 - 6, 1991

Leaders will be
Wayne R. Petersen
and Chris Haney.

Contact: Bruce Hallett
697 Darlington Rd NE
Atlanta, GA 30305
