

SHIPSTERN WILDLIFE RESERVE

BIRD SPECIES CHECKLIST

GENERAL SIR JOHN CHAPPLE

INTRODUCTION

This checklist contains all species of birds recorded and verified as occurring within the Shipstern Reserve area as of 1st March, 1989. Without doubt many more species will be recorded as the survey is extended, and the checklist will be updated accordingly.

RESERVE HABITATS

There are five major habitats represented in the area, ranging from sub-tropical forest to saline wetlands and mangrove-bordered lagoons, each with its own specialised ecosystem, leading to the overall rich tapestry of wildlife to be found on the Reserve.

Subtropical Moist Forest (NF and SF)

Within the Reserve there are two tracts of forest, totalling about 19.5 km². The first, of about 12km², lies

Northern Forest (NF) The first tract, of about 12km², lies between the savanna north of the lagoon and the northern mangrove coastline.

Southern Forest (SF) The second tract (of 7.5km²) lies south of the lagoon, and extends to the southern boundary.

These forest tracts are exceptionally heterogeneous in stature and structure, and are in a state of regeneration following their devastation by Hurricane Janet in 1955. They are now essentially reaching a state of mature secondary growth. The major differences in forest throughout the Reserve seems to correlate with soil depth - the higher forest (with emergents of 22-25m (72-80') and an average canopy height of 15-16m (50-52')) being found on the deepest soils. The 'high' forest has a canopy that is typically dense, with a relatively open understory, and abundant vines and creepers. Mahogany, Santa Maria, Sapodilla and palms are characteristic.

Status

Five temporal distribution statuses are recognised in Belize, the inventory codes used for these are :

- PR - Permanent resident : species present throughout the year
- WR - Winter resident : species present only during winter (Oct. to March)
- SR - Summer resident : species present only during summer (April to September)
- T - Transient : species present during migration period (Aug. to Oct. and March to May)
- WV - Winter visitor : species sometimes present in very low numbers during winter (Oct. through March), but Belize is not part of the normal wintering range
- A - Accidental : very few records; Belize is not part of the normal range of these species

Abundance

Because much of the survey work was carried out whilst exploring different habitats of the Reserve, a standard survey technique was not used, and the numbers of birds of different species were simply recorded whilst walking a particular route. The use of such data in determining relative abundance may well be biased towards the species that are most easily detected, but it is still useful in providing a rough guide to the relative composition of the avifauna. Three categories of abundance were used :

- C - common recorded daily in preferred habitat in moderate to large numbers, eg. more than 10 individuals
- U - uncommon usually recorded daily in preferred habitat in low to moderate numbers, eg. fewer than 10 individuals
- Ū - occasional generally not recorded daily, but still encountered on a regular basis, perhaps once or twice a week
- R - rare very infrequently encountered
- H - hypothetical species whose presence on the Reserve still requires confirmation

The low forests, located on the shallowest soils, are typified by smaller, more densely packed trees, with a canopy as low as 7-8m (22-25') in some places, and relatively few vines. Leguminous trees and bushes are prominent, often supporting small bromeliads and orchids. At the extreme end of the scale are small grassy 'glades' of largely deciduous thorn acacia scrub.

Saline Lagoon (L)

Shipstern Lagoon, with its smaller peripheral lagoons, comprises about one sixth of the total area of the Reserve. The lagoon is shallow (0.05 - 1.0m) with deeper linking channels. It has a silty bottom overlying the limestone bedrock, and islands of mangrove rise out of the water.

Saline Wetland Savanna (S)

Wide belts of savanna surround Shipstern Lagoon, and border the coastal stretches of the Reserve. The savanna vegetation is of coarse grasses, low mangrove and saline mudflats, punctuated by isolated hillocks of limestone vegetated with palms and broad-leaved forest species. Much of the savanna is bare ground, due to the high salinity of the muddy soil and the lack of protection from the sun. Smaller, less saline wetland areas are also found in patches in the forested region.

Coastal (C)

This habitat forms the northern border of the Reserve and part of the eastern border. The coastal habitat is typically dense mangrove.

Regenerating 'Slash-and-burn' Farm Areas (Milpas) (M)

This category includes a recently abandoned milpa (20 - 30 acres of forest cleared for agriculture), found along the Main Trail. A further 2 acre milpa is in a similar stage of regeneration by the roadside slightly nearer the Reserve Headquarters. The Reserve Headquarters is also included in this category, as it contains grassed and garden areas,

Species	Scientific Name	1	2	3	4	5	6	7	Status	Abundance	Habitat Preference	
Great Tinamou	<i>Tinamus major</i>								PR	U	HF/LF	
Thicket Tinamou	<i>Crypturellus cinnameus</i>								PR	U	LF	
Pied-billed Grebe	<i>Podilymbus podiceps</i>								PR	R	L	
Brown Pelican	<i>Pelecanus occidentalis</i>								PR	C	C	
Double-crested Cormorant	<i>Phalacrocorax auritus</i>								PR	U	C	
Olivaceous Cormorant	<i>Phalacrocorax olivaceus</i>								PR	C	L/C	
Anhinga	<i>Anhinga anhinga</i>								PR	U	L	
Magnificent Frigatebird	<i>Fregata magnificens</i>								PR	U	C/O	
Bare-throated Tiger-Heron	<i>Tigrisoma mexicanum</i>								PR	U	S	
Great Blue Heron	<i>Ardea herodias</i>								PR	C	L	
Great Egret	<i>Casmerodius albus</i>								PR	C	L	
Snowy Egret	<i>Egretta thula</i>								PR	O	L	
Little Blue Heron	<i>Egretta caerulea</i>								WR	C	L/S	
Tricolored Heron	<i>Egretta tricolor</i>								PR	U	L/S	
Reddish Egret	<i>Egretta rufescens</i>								PR	U	L/C	
Cattle Egret	<i>Bubulcus ibis</i>								PR	R	LF/M/L/S	
Green-backed Heron	<i>Butorides striatus</i>								PR	C	L/S	
Black-crowned Night-Heron	<i>Nycticorax nycticorax</i>								PR	U	L	
Yellow-crowned Night-heron	<i>Nycticorax violaceus</i>								PR	U	L	
Boat Billed Heron	<i>Cochlearius cochlearius</i>								PR	R	C	
White Ibis	<i>Eudocimus albus</i>								PR	R	LF/S/C	
Roseate Spoonbill	<i>Ajaia ajaja</i>								PR	R	L	
Wood Stork	<i>Mycteria americana</i>								PR	U	LF/S	
Blue-winged Teal	<i>Anas discors</i>								T-WR	C	L/C	
Lesser Scaup	<i>Aythya affinis</i>								WR	C	L	
Black Vulture	<i>Coragyps atratus</i>								PR	C	ubiquitous	
Turkey Vulture	<i>Cathartes aura</i>								PR	C	ubiquitous	
Lesser Yellow-headed Vulture	<i>Cathartes burrovianus</i>								SR	O	LF/S/O	
King Vulture	<i>Sarcorampus papa</i>								PR	R	LF/O	
Osprey	<i>Pandion haliaetus</i>								PR	U	L/S	
Grey-headed Kite	<i>Leptodon cayanensis</i>								PR	R	O	
Black-shouldered Kite	<i>Elanus caeruleus</i>								PR	R	S	
Snail Kite	<i>Rostrhamus sociabilis</i>								PR	R	LF/S	
Common Black Hawk	<i>Buteo callus anthracinus</i>								PR	R	LF	
Great Black Hawk	<i>Buteo callus urubitinga</i>								PR	R	LF	

Species	Scientific Name	1	2	3	4	5	6	7	Status	Abundance	Habitat Preference
Plain-breasted Ground-Dove	<i>Columbina minuta</i>								PR	U	LF/M
Ruddy Ground-Dove	<i>Columbina talpacoti</i>								PR	C	LF/M
Blue Ground-Dove	<i>Claravis pretiosa</i>								PR	U	LF
White-tipped Dove	<i>Leptotila verreauxi</i>								PR	C	NF/SF/M
Ruddy Quail-Dove	<i>Geotrygon montana</i>								PR	R	SF
Olive-throated Parakeet	<i>Aratinga nana</i>								PR	C	LF/M
White-crowned Parrot	<i>Pionus senilis</i>								PR	O	LF
White-fronted Parrot	<i>Amazona albifrons</i>								PR	C	LF/M
Yellow-lored Parrot	<i>Amazona xantholora</i>								PR	C	LF
Red-lored Parrot	<i>Amazona autumnalis</i>								PR	C	NF
Yellow-crowned Parrot	<i>Amazona ochrocephala</i>								PR	U	LF
Squirrel Cuckoo	<i>Piaya cayana</i>								PR	U	HF/LF
Groove-billed Ani	<i>Crotophaga sulcirostris</i>								PR	U	M
Vermiculated Screech Owl	<i>Otus guatemalae</i>								PR	U	LF
Spectacled Owl	<i>Pulsatrix perspicillata</i>								PR	R	NF/SF
Ferruginous Pygmy Owl	<i>Glaucidium brasilianum</i>								PR	U	HF/LF/M
Mottled Owl	<i>Ciccaba virgata</i>								PR	R	NF
Lesser Nighthawk	<i>Chordeiles acutipennis</i>								T-SR	H	O
Common Nighthawk	<i>Chordeiles minor</i>								PR	C	LF/M/S
Common Parakeet	<i>Myrtidionus albicollis</i>								PR	C	LF/M/S
Yucatan Poorwill	<i>Nyctiphrynus yucatanicus</i>								PR	U	O
Tawny-collared Nightjar	<i>Caprimulgus salvini</i>								PR	O	LF
Chimney Swift	<i>Chaetura pelagica</i>								T-NR	R	O
Vaux's Swift	<i>Chaetura vauxi</i>								PR	U	O
Green-breasted Mango	<i>Anthracothorax prevostii</i>								PR	O	LF/M
Black-crested Coquette	<i>Lophornis helenae</i>								PR	H	LF
Fork-tailed Emerald	<i>Chlorostilbon canivetii</i>								PR	U	LF/M
White-bellied Emerald	<i>Azilia candida</i>								PR	O	LF
Rufous-tailed Hummingbird	<i>Azilia tzacatl</i>								PR	O	LF/M
Ruff-bellied Hummingbird	<i>Azilia yucatanensis</i>								PR	C	LF/M
Cinnamon Hummingbird	<i>Azilia rutila</i>								PR	O	LF

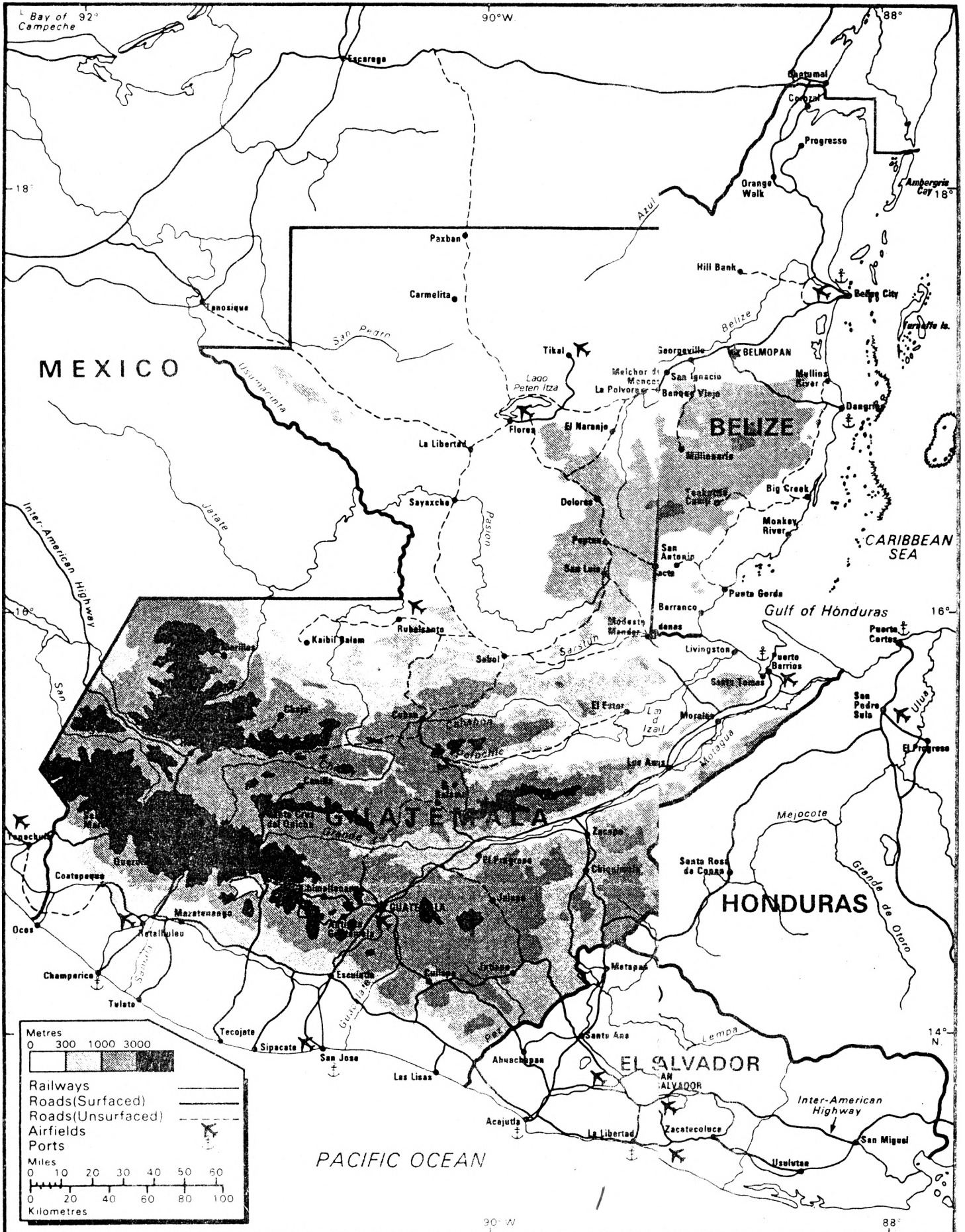
Species	Scientific Name	1	2	3	4	5	6	7	Status/Abundance	Habitat Preference	
Black-headed Trogon	<i>Trogon melanocephalus</i>								PR	C	LF/M
Violaceous Trogon	<i>Trogon violaceus</i>								PR	U	LF/M
Blue-crowned Motmot	<i>Monotus monota</i>								PR	U	HF/LF
Ringed Kingfisher	<i>Ceryle torquata</i>								PR	U	L
Reited Kingfisher	<i>Ceryle alcyon</i>								T-MR	C	L
American Pigmy Kingfisher	<i>Chloroceryle aenea</i>								PR	O	M
White-necked Puffbird	<i>Bucco macrorhynchos</i>								PR	U	LF
Collared Aracari	<i>Pteroglossus torquatus</i>								PR	U	HF/LF
Keel-billed Toucan	<i>Ramphastos sulfuratus</i>								PR	U	HF/LF
Golden-fronted Woodpecker	<i>Melanerpes aurifrons</i>								PR	C	HF/LF/M
Yellow-bellied Sapsucker	<i>Sphyrapicus varius</i>								T-MR	R	SF
Smoky-brown Woodpecker	<i>Veniliornis fumigatus</i>								PR	O	HF/LF
Golden-olive Woodpecker	<i>Piculus rubiginosus</i>								PR	R	NF/SF
Chestnut-colored Woodpecker	<i>Ceileus castaneus</i>								PR	R	NF
Lineated Woodpecker	<i>Dryocopus lineatus</i>								PR	U	HF/LF
Pale-billed Woodpecker	<i>Campephilus guatemalensis</i>								PR	O	HF/LF/M
Tawny-winged Woodcreeper	<i>Dendrocincla anabatina</i>								PR	O	LF
Ruddy Woodcreeper	<i>Dendrocincla homochroa</i>								PR	U	HF/LF
Olivaceous Woodcreeper	<i>Sittasomus griseicapillus</i>								PR	O	NF/SF
Hedge-billed Woodcreeper	<i>Glyphorhynchus spirurus</i>								PR	R	NF
Barred Woodcreeper	<i>Dendrocolaptes certhia</i>								PR	R	HF
Ivory-billed Woodcreeper	<i>Xiphorhynchus flavigaster</i>								PR	U	HF/LF
Streak-headed Woodcreeper	<i>Lepidocolaptes souleyetii</i>								PR	U	HF/LF
Barred Antshrike	<i>Thamnophilus doliatus</i>								PR	O	LF/M
Northern Beardless Tyrannulet	<i>Camptostoma obsoletum</i>								PR	U	LF
Yellow-bellied Elaenia	<i>Elaenia flavogaster</i>								PR	O	LF/M
Ochre-bellied Flycatcher	<i>Mionectes oleagineus</i>								PR	R	M

Species	Scientific Name								Habitat		
		1	2	3	4	5	6	7	Status	Abundance	Preference
Gray Hawk	<i>Buteo nitidus</i>								PR	R	LF
Roadside Hawk	<i>Buteo magirostris</i>								PR	C	HF/LF/M
Short-tailed Hawk	<i>Buteo brachyurus</i>								PR	R	NF
White-tailed Hawk	<i>Buteo albicaudatus</i>								PR	R	LF/S
Laughing Falcon	<i>Herpetotheres cachinnans</i>								PR	U	LF
Merlin	<i>Falco columbarius</i>								T	R	NF
Apomado Falcon	<i>Falco femoralis</i>								PR	R	NF
Sat Falcon	<i>Falco ruficularis</i>								PR	R	LF
Peregrine Falcon	<i>Falco peregrinus</i>								WR	R	L/C/D
Plain Chachalaca	<i>Oryzopsis vetula</i>								PR	C	HF/LF/S
Great Curassow	<i>Crax rubra</i>								PR	R	HF
Ocellated Turkey	<i>Agriocharis ocellata</i>								PR	R	HF
Ruddy Crane	<i>Laterallus ruber</i>								PR	R	S
Clapper Rail	<i>Rallus longirostris</i>								PR	R	S
Gray-necked Woodrail	<i>Aramides cajanea</i>								PR	U	LF
American Coot	<i>Fulica americana</i>								WR	C	L
Black-bellied Plover	<i>Pluvialis squatarola</i>								T-WR	R	C
Wilson's Plover	<i>Charadrius wilsonia</i>								PR	U	S
Semipalmated Plover	<i>Charadrius semipalmatus</i>								T-WR	R	S
Killdeer	<i>Charadrius vociferus</i>								T-WR	R	C/S
Black-necked Stilt	<i>Himantopus mexicanus</i>								PR	U	L/S
Greater Yellowlegs	<i>Tringa melanoleuca</i>								T-WR	C	L/S
Lesser Yellowlegs	<i>Tringa flavipes</i>								WR	U	L/S
Spotted Sandpiper	<i>Actitis macularia</i>								T-WR	O	L/C
Sanderling	<i>Calidris alba</i>								T	U	C
Semipalmated Sandpiper	<i>Calidris pusilla</i>								T	U	L/S
Western Sandpiper	<i>Calidris mauri</i>								T	R	C/S
Least Sandpiper	<i>Calidris minutilla</i>								T-WR	C	L/S
White-rumped Sandpiper	<i>Calidris fuscicollis</i>								T	R	L/S
Common Snipe	<i>Gallinago gallinago</i>								WR	R	S
Laughing Gull	<i>Larus atricilla</i>								PR	U	L/S
Caspian Tern	<i>Sterna caspia</i>								PR	U	L/C
Royal Tern	<i>Sterna maxima</i>								PR	C	C
Sandwich Tern	<i>Sterna sandvicensis</i>								PR	C	C
Least Tern	<i>Sterna antillarum</i>								PR	C	L
Pale-vented Pigeon	<i>Columba cayennensis</i>								PR	U	LF
Red-billed Pigeon	<i>Columba flavirostris</i>								PR	C	LF/M
Short-billed Pigeon	<i>Columba nigrirostris</i>								PR	O	NF
White-winged Dove	<i>Zenaida asiatica</i>								PR	U	LF/S
Common Ground-Dove	<i>Columbina passerina</i>								PR	C	LF/M

Species	Scientific Name								Habitat		
		1	2	3	4	5	6	7	Status	Abundance	Preference
Red-legged Honeycreeper	<i>Cyanerpes cyaneus</i>								PR	R	LF/M
Scrub Euphonia	<i>Euphonia affinis</i>								PR	U	LF/M
Yellow-throated Euphonia	<i>Euphonia hirundinacea</i>								PR	U	LF
Red-throated Ant-tanager	<i>Habia fuscicauda</i>								PR	U	LF/HF
Rose-throated Tanager	<i>Piranga roseogularis</i>								PR	U	LF
Summer Tanager	<i>Piranga rubra</i>								T-MR	R	HF
Scarlet Tanager	<i>Piranga olivacea</i>								T-MR	R	M
Northern Cardinal	<i>Cardinalis cardinalis</i>								PR	U	HF/S
Rose-breasted Grosbeak	<i>Pheucticus ludovicianus</i>								T-MR	R	LF
Blue Bunting	<i>Cyanocopsa parcellina</i>								PR	R	LF
Indigo Bunting	<i>Passerina cyanea</i>								T-MR	R	LF/M
Olive Sparrow	<i>Arremonops rufivirgatus</i>								PR	R	LF/M
Green-backed Sparrow	<i>Arremonops chloronotus</i>								PR	U	LF
White-collared Seedeater	<i>Sporophila torqueola</i>								PR	U	LF/M/S
Melodius Blackbird	<i>Dives dives</i>								PR	U	LF/M
Great-tailed Grackle	<i>Quiscalus mexicanus</i>								PR	R	HF
Bronzed Cowbird	<i>Molothrus aeneus</i>								PR	R	HF
Black-cowled Oriole	<i>Icterus dominicensis</i>								PR	U	LF/M
Hooded Oriole	<i>Icterus cucullatus</i>								PR	C	LF/HF/M
Yellow-backed Oriole	<i>Icterus chrysater</i>								PR	C	M
Altamira Oriole	<i>Icterus gularis</i>								PR	H	LF
Yellow-billed Cuckoo	<i>Amphispiza holosericeus</i>								PR	R	LF

Species	Scientific Name	1	2	3	4	5	6	7	Status	Abundance	Habitat Preference
Sepia-capped Flycatcher	<i>Leptopogon anaurocephalus</i>								PR	0	HF/M
Northern Bentbill	<i>Oncostoma cinereiculare</i>								PR	U	LF
Yellow-olive Flycatcher	<i>Tolmomyias sulphurescens</i>								PR	U	LF/M
Greater Pewee	<i>Contopus pertinax</i>								PR	R	SF
Eastern Wood-pewee	<i>Contopus virens</i>								T-WR	R	LF
Least Flycatcher	<i>Empidonax minimus</i>								T-WR	U	LF/S
Vermilion Flycatcher	<i>Pyrocephalus rubinus</i>								T-WR	U	NF/M
Bright-rumped Attila	<i>Attila spadiceus</i>								PR	U	LF
Yucatan Flycatcher	<i>Myiarchus yucatanensis</i>								PR	R	M
Dusky-capped Flycatcher	<i>Myiarchus tuberculifer</i>								PR	U	LF/M
Great-crested Flycatcher	<i>Myiarchus crinitus</i>								WR	0	LF
Brown-crested Flycatcher	<i>Myiarchus tyrannulus</i>								PR	U	LF/M/S
Great Kiskadee	<i>Pitangus sulphuratus</i>								PR	C	LF/M
Roat-billed Flycatcher	<i>Megarynchus pitangua</i>								PR	C	HF/LF/M
Social Flycatcher	<i>Myiozetetes similis</i>								PR	U	HF/LF
Tropical Kingbird	<i>Tyrannus melancholicus</i>								PR	C	HF/LF/M
Cassin's Kingbird	<i>Tyrannus vociferans</i>								A	R	HF/LF/M/S
Eastern Kingbird	<i>Tyrannus tyrannus</i>								T	U	S
Bray-collared Becard	<i>Pachyrhamphus najor</i>								PR	0	LF
Rose-throated Becard	<i>Pachyrhamphus aglaiae</i>								PR	0	LF/S
Masked Tityra	<i>Tityra semifasciata</i>								PR	U	LF
Black-crowned Tityra	<i>Tityra inquisitor</i>								PR	U	NF/M
Red-capped Manakin	<i>Pipra mentalis</i>								PR	0	LF
Purple Martin	<i>Progne subis</i>								T	R	NF
Tree Swallow	<i>Tachycineta bicolor</i>								T-WR	U	0
Mangrove Swallow	<i>Tachycineta albilinea</i>								PR	U	L/S
Barn Swallow	<i>Hirundo rustica</i>								T-WR	C	S/0
Green Jay	<i>Cyanocorax yucas</i>								PR	R	LF/M/S
Brown Jay	<i>Cyanocorax morio</i>								PR	C	LF
Yucatan Jay	<i>Cyanocorax yucatanicus</i>								PR	C	HF/LF
Spot-breasted Wren	<i>Thryothorus naculapectus</i>								PR	C	HF/LF
Plain Wren	<i>Thryothorus modestus</i>								PR	U	LF
White-bellied Wren	<i>Uropsila leucogastra</i>								PR	U	LF
White-breasted Wood Wren	<i>Henicorhina leucosticta</i>								PR	U	LF

BELIZE and GUATEMALA



General Staff Map Section, GSGS 11047, Edition 8-GSGS, September 1987

Printed under the direction of Director of Military Survey, Ministry of Defence, United Kingdom 1987

SHIPSTERN WILDLIFE RESERVE

BIRD SPECIES CHECKLIST

GENERAL SIR JOHN CHAPPLE

INTRODUCTION

This checklist contains all species of birds recorded and verified as occurring within the Shipstern Reserve area as of 1st March, 1989. Without doubt many more species will be recorded as the survey's extended, and the checklist will be updated accordingly.

RESERVE HABITATS

There are five major habitats represented in the area, ranging from subtropical forest to saline wetlands and mangrove-bordered lagoons, each with its own specialized ecosystem, leading to the overall rich tapestry of wildlife to be found on the Reserve,

Subtropical Moist Forest (NF and SF)

Within the Reserve there are two tracts of forest, totalling about 19.5 km².

Northern Forest (NF) The first tract, of about 12 km², lies between the savanna north of the lagoon and the northern mangrove coastline.

Southern Forest (SF) The second tract (of 7.5 km²) lies south of the lagoon, and extends to the southern boundary.

These forest tracts are exceptionally heterogeneous in stature and structure, and are in a state of regeneration following their devastation by *Hurricane Janet* in 1955. They are now essentially reaching a state of mature secondary growth. The major differences in forest throughout the Reserve seems to correlate with soil depth - the higher forest (with emergents of 22-25 m (72-82 feet) and an average canopy height of 15-16 m (49-52 feet)) being found on the deepest soils. The 'high' forest has a canopy that is typically dense, with a relatively open understorey, and abundant vines and creepers. Mahogany, Santa Maria, Sapodilla and palms are characteristic.

Status

Five temporal-distribution statuses are recognized in Belize; the inventory codes used for these are :

PR - Permanent resident: species present throughout the year

WR - Winter resident: species present only during winter
(October to March)

SR - Summer resident: species present only during summer
(April to September)

T - Transient: species present during migration period
(August to October and March to May)

WV - Winter visitor: species sometimes present in very
low numbers during winter (October through March), but
Belize is not part of the normal wintering range

A - Accidental: very few records; Belize is not part
of the normal range of these species

Abundance

Because much of the survey work was carried out while exploring different habitats of the Reserve, a standard survey technique was not used, and the numbers of birds of different species were simply recorded while walking a particular route. The use of such data in determining relative abundance may well be biased toward the species that are most easily detected, but it is still useful in providing a rough guide to the relative composition of the avifauna. Three categories of abundance were used:

C - common recorded daily in preferred habitat in moderate to
large numbers; i.e. more than 10 individuals

U - uncommon usually recorded daily in preferred habitat in
low to moderate numbers; i.e. fewer than 10
individuals

O - occasional generally not recorded daily, but still encountered
on a regular basis, perhaps once or twice a week

R - rare very infrequently encountered

H - hypothetical species whose presence on the Reserve still
requires confirmation

The low forests, located on the shallowest soils, are typified by smaller, more densely packed trees, with a canopy as low as 7-8 m (23-26 feet) in some places, and relatively few vines. Leguminous trees and bushes are prominent, often supporting small bromeliads and orchids. At the extreme end of the scale are small grassy 'glades' of largely deciduous, thorn *Acacia* scrub.

Saline Lagoon (L)

Shipstern Lagoon, with its smaller peripheral lagoons, comprises about one-sixth of the total area of the Reserve. The lagoon is shallow (0.05-1.0 m) with deeper, linking channels. It has a silty bottom overlying the limestone bedrock, and islands of mangrove rise out of the water.

Saline Wetland Savanna (S)

Wide belts of savanna surround Shipstern Lagoon, and border the coastal stretches of the Reserve. The savanna vegetation is of coarse grasses, low mangrove and saline mudflats, punctuated by isolated hillocks of limestone vegetated with palms and broad-leaved-forest species. Much of the savanna is bare ground, due to the high salinity of the muddy soil and the lack of protection from the sun. Smaller, less-saline wetland areas are also found in patches in the forested region.

Coastal (C)

This habitat forms the northern border of the Reserve and part of the eastern border. The coastal habitat is typically dense mangrove.

Regenerating 'Slash-and-burn' Farm Areas (Milpas) (M)

This category includes a recently abandoned milpa (20-30 acres of forest cleared for agriculture), found along the Main Trail. A further 2-acre milpa is in a similar stage of regeneration by the roadside slightly nearer the Reserve Headquarters. The Reserve Headquarters is also included in this category, as it contains grassed and garden areas.

Species	Scientific Name	1	2	3	4	5	6	7	Status	Abundance	Habitat Preference
Great Tinamou	<i>Tinamus major</i>								PR	U	HF/LF
Thicket Tinamou	<i>Crypturellus cinnamomeus</i>								PR	U	LF
Pied-billed Grebe	<i>Podilymbus podiceps</i>								PR	R	L
Brown Pelican	<i>Pelecanus occidentalis</i>								PR	C	C
Double-crested Cormorant	<i>Phalacrocorax auritus</i>								PR	U	C
Olivaceous Cormorant	<i>Phalacrocorax olivacea</i>								PR	C	L/C
Anhinga	<i>Anhinga anhinga</i>								PR	U	L
Magnificent Frigatebird	<i>Fregata magnificens</i>								PR	U	C/O
Bare-throated Tiger-Heron	<i>Tigrisoma mexicanum</i>								PR	U	S
Great Blue Heron	<i>Ardea herodias</i>								PR	C	L
Great Egret	<i>Casmerodius albus</i>								PR	C	L
Snowy Egret	<i>Egretta thula</i>								PR	O	L
Little Blue Heron	<i>Egretta caerulea</i>								WR	C	L/S
Tricolored Heron	<i>Egretta tricolor</i>								PR	U	L/S
Reddish Egret	<i>Egretta rufescens</i>								PR	U	L/C
Cattle Egret	<i>Bubulcus ibis</i>								PR	R	LF/M/L/S
Green-backed Heron	<i>Butorides striatus</i>								PR	C	L/S
Black-crowned Night-Heron	<i>Nycticorax nycticorax</i>								PR	U	L
Yellow-crowned Night-Heron	<i>Nycticorax violaceus</i>								PR	U	L
Boat-billed Heron	<i>Cochlearius cochlearius</i>								PR	R	C
White Ibis	<i>Eudocimus albus</i>								PR	R	LF/S/C
Roseate Spoonbill	<i>Ajaia ajaja</i>								PR	R	L
Wood Stork	<i>Mycteria americana</i>								PR	U	LF/S
Blue-winged Teal	<i>Anas discors</i>								T-WR	C	L/C
Lesser Scaup	<i>Aythya affinis</i>								WR	C	L
Black Vulture	<i>Coragyps atratus</i>								PR	C	ubiquitous
Turkey Vulture	<i>Cathartes aura</i>								PR	C	ubiquitous
Lesser Yellow-headed Vulture	<i>Cathartes burrovianus</i>								SR	O	LF/S/O
King Vulture	<i>Sarcoramphus papa</i>								PR	R	LF/O
Osprey	<i>Pandion haliaetus</i>								PR	U	L/S
Gray-headed Kite	<i>Leptodon cayanensis</i>								PR	R	O
Black-shouldered Kite	<i>Elanus caeruleus</i>								PR	R	S
Snail Kite	<i>Rostrhamus sociabilis</i>								PR	R	LF/S
Common Black Hawk	<i>Buteogallus anthracinus</i>								PR	R	LF
Great Black Hawk	<i>Buteogallus urubitinga</i>								PR	R	LF

Species	Scientific Name	1	2	3	4	5	6	7	Status	Abundance	Habitat Preference
Plain-breasted Ground-Dove	<i>Columbina minuta</i>								PR	U	LF/M
Ruddy Ground-Dove	<i>Columbina talpacoti</i>								PR	C	LF/M
Slue Ground-Dove	<i>Claravis pretiosa</i>								PR	U	LF
White-tipped Dove	<i>Leptotila verreauxi</i>								PR	C	NF/SF/M
Ruddy Quail-Dove	<i>Geotrygon montana</i>								PR	R	SF
Olive-throated Parakeet	<i>Aratinga nana</i>								PR	C	LF/M
White-crowned Parrot	<i>Pionus senilis</i>								PR	O	LF
White-fronted Parrot	<i>Amazona albifrons</i>								PR	C	LF/M
Yellow-lored Parrot	<i>Amazona xantholora</i>								PR	C	LF
Red-lored Parrot	<i>Amazona autumnalis</i>								PR	C	NF
Yellow-crowned Parrot	<i>Amazona ochrocephala</i>								PR	U	LF
Squirrel Cuckoo	<i>Piaya cayana</i>								PR	U	HF/LF
Groove-billed Ani	<i>Crotophaga sulcirostris</i>								PR	U	M
Vermiculated Screech-Owl	<i>Otus guatemalae</i>								PR	U	LF
Spectacled Owl	<i>Pulsatrix perspicillata</i>								PR	R	NF/SF
Ferruginous Pygmy-Owl	<i>Glaucidium brasilianum</i>								PR	U	HF/LF/M
Mottled Owl	<i>Ciccaba virgata</i>								PR	R	NF
Lesser Nighthawk	<i>Chordeiles acutipennis</i>								T-SR	H	O
Common Nighthawk	<i>Chordeiles minor</i>								PR	C	LF/M/S
Common Pauraque	<i>Nyctidromus albicollis</i>								PR	C	LF/M/S
Yucatan Poorwill	<i>Nyctiphrynus yucatanicus</i>								PR	U	O
Tawny-collared Nightjar	<i>Caprimulgus sabini</i>								PR	O	LF
Chimney Swift	<i>Chaetura pelagica</i>								T-WR	R	O
Vaux's Swift	<i>Chaetura vauxi</i>								PR	U	O
Green-breasted Mango	<i>Anthracothorax prevostii</i>								PR	O	LF/M
Black-crested Coquette	<i>Lophornis helenae</i>								PR	H	LF
Fork-tailed Emerald	<i>Chlorostilbon canivetii</i>								PR	U	LF/M
White-bellied Emerald	<i>Amazilia candida</i>								PR	O	LF
Rufous-tailed Hummingbird	<i>Amazilia tzacatl</i>								PR	O	LF/M
Buff-bellied Hummingbird	<i>Amazilia yucatanensis</i>								PR	C	LF/M
Cinnamon Hummingbird	<i>Amazilia rutila</i>								PR	O	LF

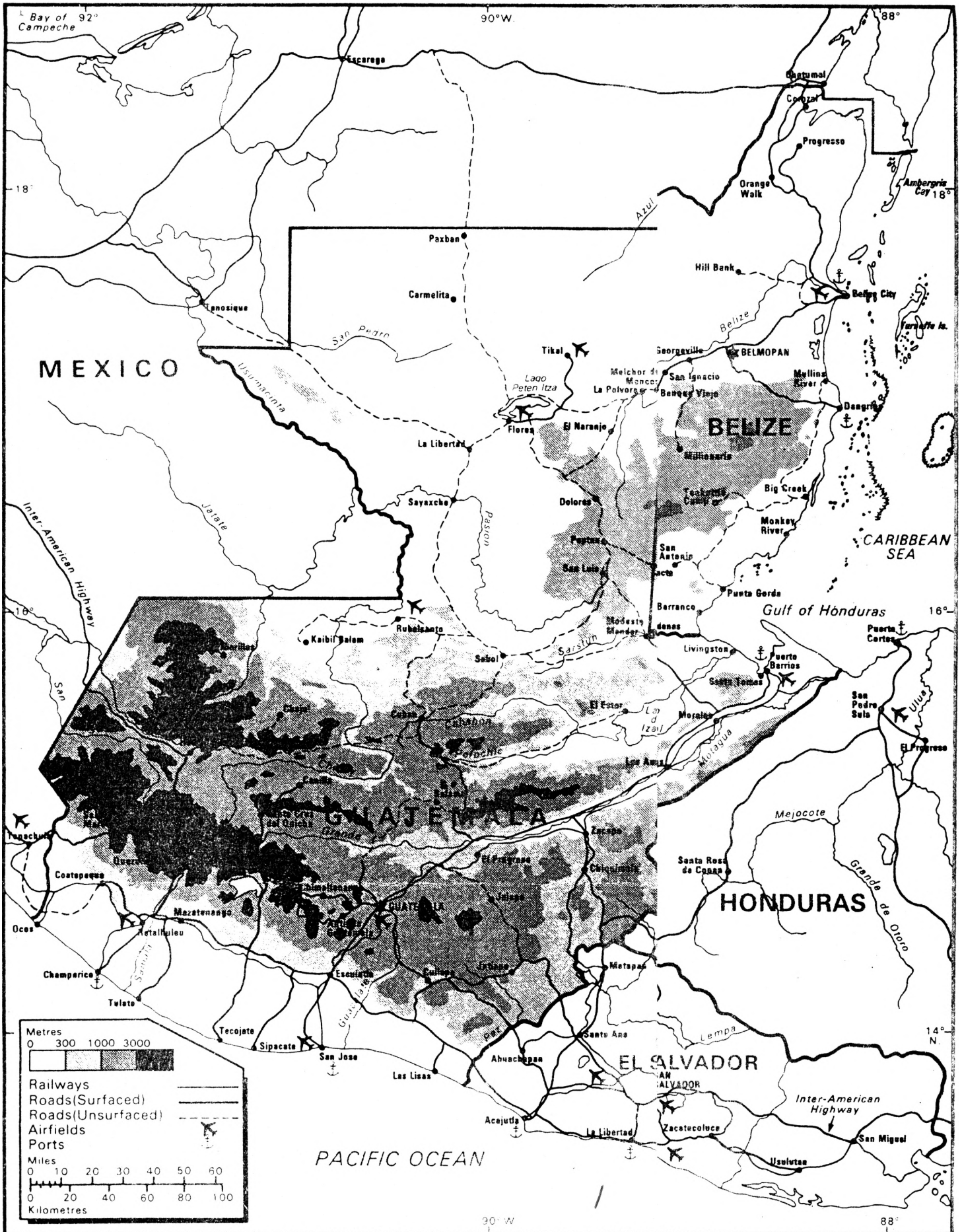
Species	Scientific Name	1	2	3	4	5	6	7	Status	Abundance	Habitat Preference
Black-headed Trogon	<i>Trogon melanocephalus</i>								PR	C	LF/M
Violaceous Trogon	<i>Trogon violaceus</i>								PR	U	LF/M
Blue-crowned Motmot	<i>Momotus momota</i>								PR	U	HF/LF
Ringed Kingfisher	<i>Ceryle torquata</i>								PR	U	L
Belted Kingfisher	<i>Ceryle alcyon</i>								T-WR	C	L
American Pygmy Kingfisher	<i>Chloroceryle aenea</i>								PR	C	M
White-necked Puffbird	<i>Bucco macrorhynchos</i>								PR	U	LF
Collared Aracari	<i>Pteroglossus torquatus</i>								PR	U	HF/LF
Keel-billed Toucan	<i>Ramphastos sulfuratus</i>								PR	U	HF/LF
Golden-fronted Woodpecker	<i>Melanerpes aurifrons</i>								PR	C	HF/LF/M
Yellow-bellied Sapsucker	<i>Sphyrapicus varius</i>								T-WR	R	SF
Smoky-brown Woodpecker	<i>Veniliornis fumigatus</i>								PR	O	HF/LF
Golden-olive Woodpecker	<i>Piculus rubiginosus</i>								PR	R	NF/SF
Chestnut-colored Woodpecker	<i>Celeus castaneus</i>								PR	R	NF
Lineated Woodpecker	<i>Dryocopus lineatus</i>								PR	U	HF/LF
Pale-billed Woodpecker	<i>Campephilus guatemalensis</i>								PR	O	HF/LF/M
Tawny-winged Woodcreeper	<i>Dendrocincla anabatina</i>								PR	O	LF
Ruddy Woodcreeper	<i>Dendrocincla homochroa</i>								PR	U	HF/LF
Olivaceous Woodcreeper	<i>Sittasomus griseicapillus</i>								PR	O	NF/SF
Wedge-billed Woodcreeper	<i>Glyphorhynchus spirurus</i>								PR	R	NF
Barred Woodcreeper	<i>Dendrocolaptes certhia</i>								PR	R	HF
Ivory-Billed Woodcreeper	<i>Xiphorhynchus flavigaster</i>								PR	U	HF/LF
Streak-headed Woodcreeper	<i>Lepidocolaptes souleyetii</i>								PR	U	HF/LF
Barred Antshrike	<i>Thamnophilus doliatus</i>								PR	O	LF/M
Northern Beardless-Tyrannulet	<i>Camptostoma obsoletus</i>								PR	U	LF
Yellow-bellied Elaenia	<i>Elaenia flavigaster</i>								PR	O	LF/M
Ochre-bellied Flycatcher	<i>Mionectes oleagineus</i>								PR	R	M

Species	Scientific Name	1	2	3	4	5	6	7	Status	Abundance	Habitat Preference
Gray Hawk	<i>Buteo nitidus</i>								PR	R	LF
Roadside Hawk	<i>Buteo magnirostris</i>								PR	C	HF/LF/M
Short-tailed Hawk	<i>Buteo brachyurus</i>								PR	R	NF
White-tailed Hawk	<i>Buteo albicaudatus</i>								PR	R	LF/S
Laughing Falcon	<i>Herpetotheres cachinnans</i>								PR	U	LF
Merlin	<i>Falco columbarius</i>								T	R	NF
Aplomado Falcon	<i>Falco femoralis</i>								PR	R	NF
Bat Falcon	<i>Falco rufigularis</i>								PR	R	LF
Peregrine Falcon	<i>Falco peregrinus</i>								WR	R	L/C/O
Plain Chachalaca	<i>Ortalis vetula</i>								PR	C	HF/LF/S
Great Curassow	<i>Crax rubra</i>								PR	R	HF
Ocellated Turkey	<i>Agriocharis ocellata</i>								PR	R	HF
Ruddy Crane	<i>Laterallus ruber</i>								PR	R	S
Clasper Rail	<i>Rallus longirostris</i>								PR	R	S
Gray-necked Wood-Rail	<i>Aramides cajanea</i>								PR	U	LF
American Coot	<i>Fulica americana</i>								WR		C L
Black-bellied Plover	<i>Pluvialis squatarola</i>								T-WR	R	C
Wilson's Plover	<i>Charadrius wilsonia</i>								PR	U	S
Semipalmated Plover	<i>Charadrius semipalmatus</i>								T-WR	R	S
Killdeer	<i>Charadrius vociferus</i>								T-WR	R	C/S
Black-necked Stilt	<i>Himantopus mexicanus</i>								PR	U	L/S
Greater Yellowlegs	<i>Tringa melanoleuca</i>								T-WR	C	L/S
Lesser Yellowlegs	<i>Tringa flavipes</i>								WR	U	L/S
Spotted Sandpiper	<i>Actitis macularius</i>								T-WR	O	L/C
Sanderling	<i>Calidris alba</i>								T	U	C
Semipalmated Sandpiper	<i>Calidris pusilla</i>								T	U	L/S
Western Sandpiper	<i>Calidris mauri</i>								T	R	C/S
Least Sandpiper	<i>Calidris minutilla</i>								T-WR	C	L/S
White-rumped Sandpiper	<i>Calidris fuscicollis</i>								T	R	L/S
Common Snipe	<i>Gallinago gallinago</i>								WR	R	S
Laughing Gull	<i>Larus atricilla</i>								PR	U	L/S
Caspian Tern	<i>Sterna caspia</i>								PR	U	L/C
Royal Tern	<i>Sterna maxima</i>								PR	C	C
Sandwich Tern	<i>Sterna sandvicensis</i>								PR	C	C
Least Tern	<i>Sterna antillarum</i>								PR	C	L
Pale-vented Pigeon	<i>Columba cayennensis</i>								PR	U	LF
Red-billed Pigeon	<i>Columba flavirostris</i>								PR	C	LF/M
Short-billed Pigeon	<i>Columba nigrirostris</i>								PR	O	NF
White-winged Dove	<i>Zenaida asiatica</i>								PR	U	LF/S
Common Ground-Dove	<i>Columbina passerina</i>								PR	C	LF/M

Species	Scientific Name	1	2	3	4	5	6	7	Status	Abundance	Habitat Preference
Red-legged Honeycreeper	<i>Cyanerpes cyaneus</i>								PR	R	LF/M
Scrub Euphonia	<i>Euphonia affinis</i>								PR	U	LF/M
Yellow-throated Euphonia	<i>Euphonia hirundinacea</i>								PR	O	LF
Red-throated Ant-Tanager	<i>Habia fuscicauda</i>								PR	U	LF/HF
Rose-throated Tanager	<i>Piranga roseogularis</i>								PR	O	LF
Summer Tanager	<i>Piranga rubra</i>								T-WR	R	HF
Scarlet Tanager	<i>Piranga olivacea</i>								T-WR	R	M
Northern Cardinal	<i>Cardinalis Cardinalis</i>								PR	O	HF/S
Rose-breasted Grosbeak	<i>Pheucticus ludovicianus</i>								T-WR	R	LF
Blue Bunting	<i>Cyanocopsa parellina</i>								PR	R	LF
Indigo Bunting	<i>Passerina cyanea</i>								T-WR	R	LF/M
Olive Sparrow	<i>Arremonops rufivirgatus</i>								PR	R	LF/M
Green-backed Sparrow	<i>Arremonops chloronotus</i>								PR	O	LF
White-collared Seedeater	<i>Sporophila torqueola</i>								PR	U	LF/M/S
Melodious Blackbird	<i>Dives dives</i>								PR	U	LF/M
Great-tailed Grackle	<i>Quiscalus mexicanus</i>								PR	R	NE
Bronzed Cowbird	<i>Molothrus aeneus</i>								PR	R	NE
Black-cowled Oriole	<i>Icterus dominicensis</i>								PR	U	LF/M
Hooded Oriole	<i>Icterus cucullatus</i>								PR	C	LF/HF/M
Yellow-backed Oriole	<i>Icterus chrysater</i>								PR	C	M
Altamira Oriole	<i>Icterus gularis</i>								PR	H	LF
Yellow-billed Cacique	<i>Amblycercus holosericeus</i>								PR	R	LF

Species	Scientific Name	1	2	3	4	5	6	7	Status	Abundance	Habitat Preference
Sepia-capped Flycatcher	<i>Leptopogon amaurocephalus</i>								PR	O	HF/M
Northern Bentbill	<i>Oncostoma cinereigulare</i>								PR	U	LF
Yellow-olive Flycatcher	<i>Tolmomyias sulphurescens</i>								PR	U	LF/M
Greater Pewee	<i>Contopus pertinax</i>								PR	R	SF
Eastern Wood-Pewee	<i>Contopus virens</i>								T-WR	R	LF
Least Flycatcher	<i>Empidonax minimus</i>								T-WR	U	LF/S
Vermilion Flycatcher	<i>Pyrocephalus rubinus</i>								T-WR	U	NF/M
Bright-rumped Attila	<i>Attila spadiceus</i>								PR	U	LF
Yucatan Flycatcher	<i>Myiarchus yucatanensis</i>								PR	R	M
Dusky-capped Flycatcher	<i>Myiarchus tuberculifer</i>								PR	U	LF/M
Great Crested Flycatcher	<i>Myiarchus crinitus</i>								WR	O	LF
Brown-crested Flycatcher	<i>Myiarchus tyrannulus</i>								PR	U	LF/M/S
Great Kiskadee	<i>Pitangus sulphuratus</i>								PR	C	LF/M
Boat-billed Flycatcher	<i>Megarynchus pitangua</i>								PR	C	HF/LF/M
Social Flycatcher	<i>Myiozetetes similis</i>								PR	U	HF/LF
Tropical Kingbird	<i>Tyrannus melancholicus</i>								PR	C	HF/LF/M
Cassin's Kingbird	<i>Tyrannus vociferans</i>								A	R	HF/LF/M/S
Eastern Kingbird	<i>Tyrannus tyrannus</i>								T	U	S
Gray-collared Becard	<i>Pachyramphus major</i>								PR	O	LF
Rose-throated Becard	<i>Pachyramphus aglaiae</i>								PR	O	LF/S
Masked Tityra	<i>Tityra semifasciata</i>								PR	U	LF
Black-crowned Tityra	<i>Tityra inquisitor</i>								PR	U	NF/M
Red-capped Manakin	<i>Pipra mentalis</i>								PR	O	LF
Purple Martin	<i>Progne subis</i>								T	R	NF
Tree Swallow	<i>Tachycineta bicolor</i>								T-WR	U	O
Mangrove Swallow	<i>Tachycineta albilinea</i>								PR	U	L/S
Barn Swallow	<i>Hirundo rustica</i>								T-WR	C	S/O
Green Jay	<i>Cyanocorax yncas</i>								PR	R	LF/M/S
Brown Jay	<i>Cyanocorax morio</i>								PR	C	LF
Yucatan Jay	<i>Cyanocorax yucatanicus</i>								PR	C	HF/LF
Spot-breasted Wren	<i>Thryothorus maculipectus</i>								PR	C	HF/LF
Plain Wren	<i>Thryothorus modestus</i>								PR	U	LF
White-bellied Wren	<i>Uropsila leucogastra</i>								PR	U	LF
White-breasted Wood-Wren	<i>Henicorhina leucosticta</i>								PR	U	LF

BELIZE and GUATEMALA



General Staff Map Section, GSGS 11047, Edition 8-GSGS, September 1987

Preced under the direction of Director of Military Survey, Ministry of Defence, United Kingdom 1987